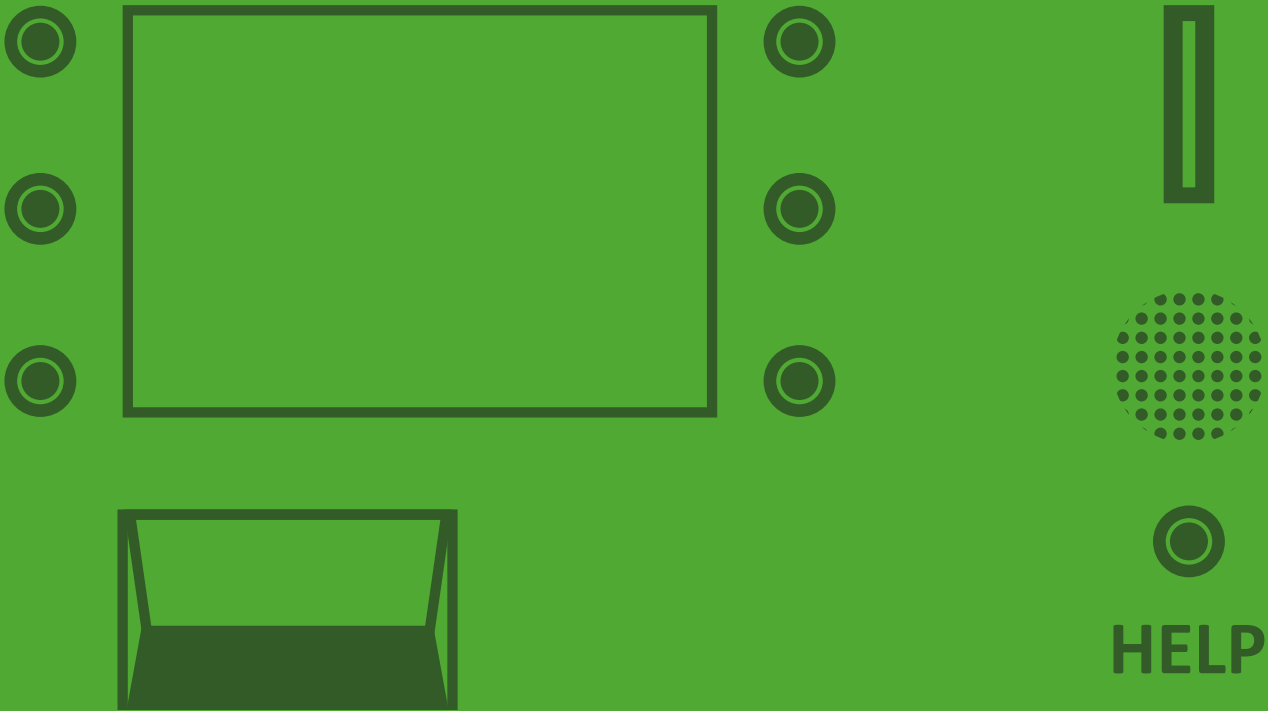




GP4P VARIANT

PARKING
SYSTEMS





VARIANT PARKING SYSTEM

parking system designed for parking fee collection, suitable for shopping centres, parking garages, hotels, airports, hospitals, P+R car parks, etc.

PARKING SYSTEM BASIC COMPONENTS

parking system server / manual pay station / entry and exit terminal / entry and exit road barrier / automatic pay station

PARKING SYSTEM ADDITIONAL COMPONENTS

licence plate recognition / parking guidance system / monitoring of vacant parking spaces in the car park / communication system - intercom

COMMUNICATION

Ethernet - TCP/IP

TYPES OF PARKING CARDS

bar code card / contactless card / magnetic stripe card

OPERATING MODE

ON LINE / OFF LINE

COLOUR EXECUTION SUPPLIED AS STANDARD

RAL 6029 Mint green / RAL 7043 Traffic grey B / RAL 9006 White AL

OTHER PARAMETERS

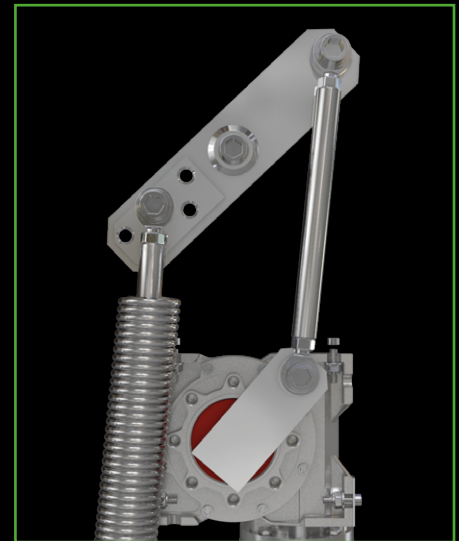
range of external operating temperatures: -20 °C to +50 °C / power supply: 230 V (110 V)

SOFTWARE AND FUNCTIONS

OS Windows 7 / SQL Anywhere / parking system administration and supervision / reports and statistics (basic, extra for automatic pay stations) / long-term cards administration / time limited access in the specified period of the day / parking place reservation system / discount voucher printing / remote car park supervision / prepayment for special one-time events / ticket validator

AUTOMATIC ROAD BARRIER

automatic road barrier for intensive traffic



barrier lever mechanism



barrier semaphore

Parameters

- cabinet made of steel metal sheet of 2.5 mm thickness, zinc coated, powder coated, fibreglass of 3 mm thickness
- power: 370 W
- opening / closing time: 1-2 s / 3-5 s
- barrier arm length: 2-3 m / 2-6 m
- dimensions: 350 x 340 x 1085 mm
- weight: 72 kg
- control: microprocessor, with frequency regulation

Optional Accessories

- knuckle mechanics of articulated arm
- barrier arm swing off mechanism
- protective rubber stripe
- LED semaphore (red/green)
- safety photocell
- vehicle detector
- aluminium barrier skirt
- barrier arm fixed support (adjustable)
- fibreglass side panel

GP4B FC Parking Barrier

ENTRY AND EXIT TERMINAL



entry terminal designed for parking card dispensing
exit terminal designed for parking card reading



video guide on the front panel



entry terminal front panel

Parameters

- cabinet made of steel metal sheet of 2 mm thickness, zinc coated, powder coated, fibreglass of 3 mm thickness
- microprocessor control
- communication via TCP/IP
- text display
- power (incl. heater): 750 W
- cabinet dimensions: 400 x 460 x 1170 mm
- weight: 42 kg

• entry terminal (possible variants):

- with bar code printer
- with Read Only contactless card reader
- with magnetic card encoder
- with dispenser of RFID transponders

• exit terminal (possible variants)

- with bar code reader
- with Read Only contactless card reader
- with magnetic card reader
- with RFID transponders reader

Optional Accessories

- colour graphic display LCD 5,7"
- motorized reader
- intercom

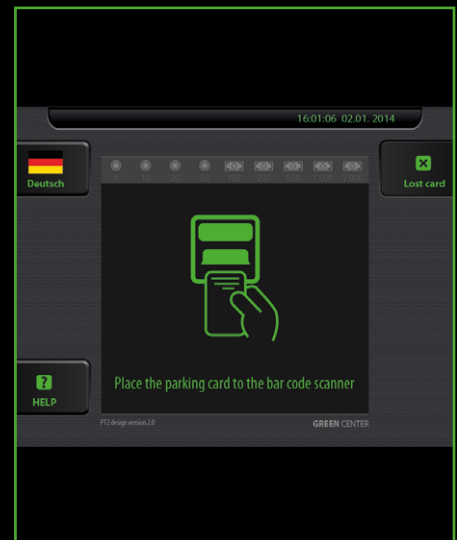
AUTOMATIC PAY STATION



automatic pay station for unattended payment of parking fees
with illustrative video guide



payment cards terminal



LCD display + video guide

Parameters

- cabinet made of steel metal sheet of 2 mm thickness, zinc coated, powder coated, fibreglass of 3.5 mm thickness
- cabinet dimensions: 976 x 583 x 1830 mm
- weight: 135 kg
- front panel LED illumination
- colour graphic LCD display of 12", control via 6 buttons
- communication via TCP/IP
- accepted banknotes: 8 denominations
- accepted coins: 16 denominations at max.
- receipt printing
- lost ticket function
- power (incl. heater): 900 W

Optional Accessories

- colour graphic touch display of 12"
- payment cards terminal + support of contactless payment
- 2 coin dispensers (1 denomination in each dispenser)
- banknote dispenser with 2 denominations
- banknote changer
- heater 1200 W
- intercom

GP4M Automatic Pay Station

Examples of the VARIANT Parking System colour execution



GREEN Center s.r.o.

Zenklova 39, 180 00 Praha 8

Czech Republic

www.green.cz • www.greenpro.cz • www.parking-system.com
e-mail: green@green.cz • tel.: +420 266 090 090 • fax: +420 266 311 069