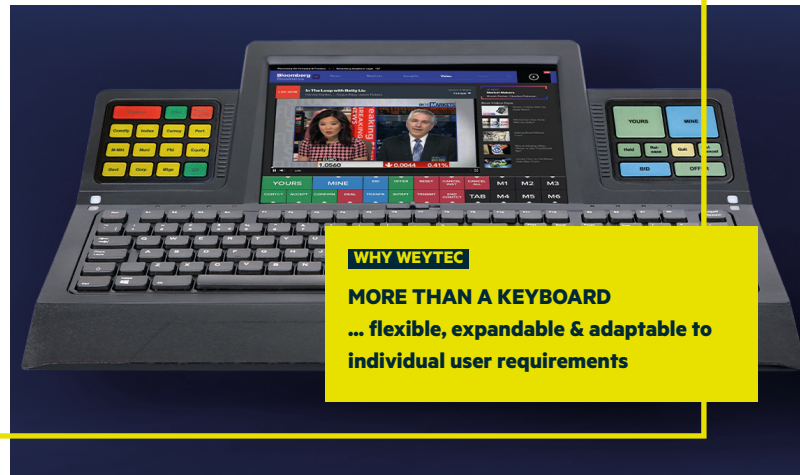


## WORKPLACE OPTIMIZATION

# smartTOUCH for Trading Floors

Multifunctional keyboards with a touchscreen



## WHY WEYTEC

## MORE THAN A KEYBOARD

... flexible, expandable & adaptable to individual user requirements

**The multifunctional smartTOUCH keyboard provides almost unlimited functionality and an intuitive user interface. It enables users to access, control and share a virtually unlimited number of workstations and screens with just one mouse and keyboard. Control monitors and video walls with a single keystroke. The touch screen can also be used to stream video or quickly execute application inputs. Due to its modular architecture, the smartTOUCH can be adapted to meet the unique requirements of specific trading floors.**

- Simple and flexible operation thanks to a modern 10.1" LCD touch screen
- Enhanced functionality with individual applications
- Optimized workflows using customized keypads with physical keys
- Hygienic working conditions thanks to easily exchangeable keyboard inlays
- Integrated loudspeakers with optimum sound quality
- Numerous interfaces for direct connection of peripheral devices
- Display up to two movable windows on the screen (Picture-in-Picture)

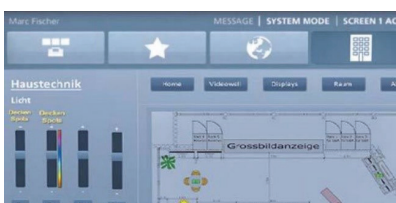
## WHY WEYTEC

## ERGONOMIC DESIGN

... maximizes working productivity

The multifunctional smartTOUCH keyboard reduces the user interface to a single device. All applications, computers and screens can be controlled with one keyboard and mouse.

## Touchscreen



The touchscreen provides a user-friendly interface to work with diverse systems. It displays all sources and monitors. Available sources are indicated in green, occupied sources in red and „view only“ sources in white. Sources are easily selected and assigned to monitors and video walls. Toggling between sources is simple using tabs.



The functionality of the touchscreen can be extended with individual applications. Almost anything is possible, from video integration, event visualization and telephony to enterprise-specific applications.

**Picture-in-Picture**

Up to two movable and scalable windows from any two IP Remote stream sources (video streams or other applications) can be activated, displayed and operated on the touchscreen.

**Customized keys and keypads**

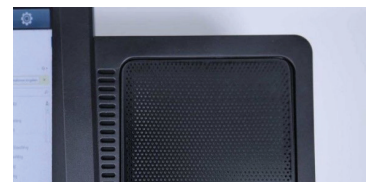
Workflows can be optimized with different keypads. The most important commands and key combinations can be assigned to physical keys. In addition to standard keypads from Bloomberg and Thomson Reuters, customized keypads with made-to-order keys (size, position, color and labeling) are also available.



A quick ejection mechanism releases the keyboard inlay from the housing unit so that users who share desks can still work on their own personal keyboards. Hygienic working conditions are thus guaranteed. The keyboard inlay is available for different countries and languages.

**Loudspeakers, motion and light sensors**

The smartTOUCH has built-in high-quality stereo speakers. This eliminates the need for external speakers at the desk. Additionally, a microphone, headphones or a USB headset can be connected to the keyboard.



Built-in light sensors automatically adjust the brightness of the screen and motion sensors detect the presence of the user. If a user is not at his or her workplace, the keyboard is automatically set to idle mode; when s/he returns, it automatically switches back to standby mode.

**Interfaces**

The keyboard supports a multitude of interfaces (USB, serial, Ethernet with PoE+, etc.) as well as all platforms in trading floor environments.



**Available products**

Art. No.	Description
22001	smartTOUCH
22030	Keypad Cover
22031BBC	Keypad Bloomberg Classic
22031FXT	Keypad Thomson Reuters FXT