



*Smart Solutions for
parking and refuelling*

MANAGE | PAY | SURVEILLANCE | E-MOBILITY

Parking Management Made Easy.

We help to optimize your parking management.

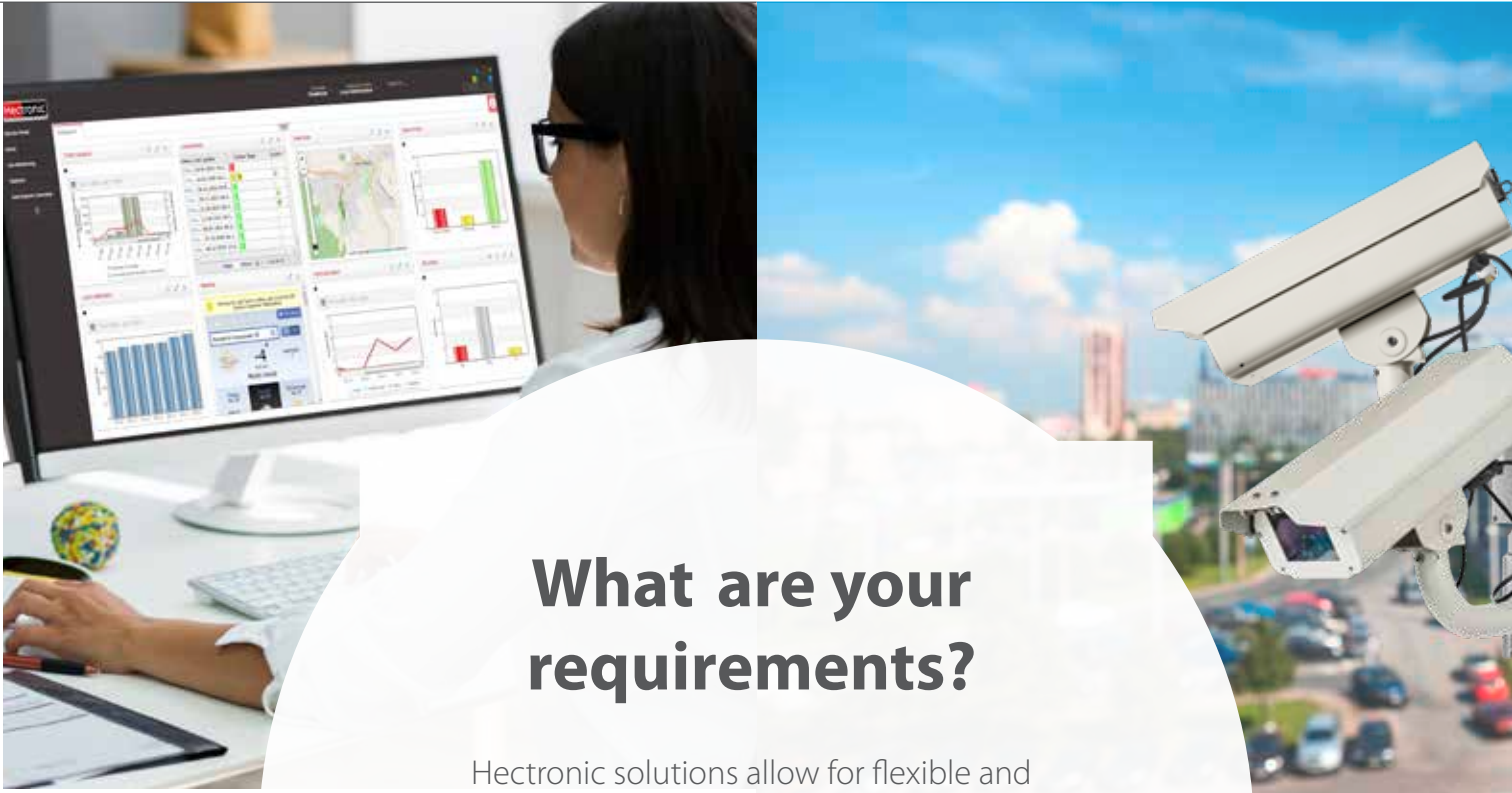
MANAGE

The web-based management software is your control centre. CityLine connects h all components of your parking management into one big whole and grows with your requirements. Developed as an open platform, CityLine can be used to integrate and map cross-manufacturer solutions and devices at the management level.

CityLine modules allow for quick and flexible expansion with contemporary features.

The central monitoring and management of parking machines from different manufacturers is carried out via the Parking Operations Module (POM).

- PAGE 4/5 Management Software CityLine
- PAGE 6/7 CityLine Modules
- PAGE 8/9 Connection of third party systems
- PAGE10/11 Parking Operations Modul (POM)



What are your requirements?

Hectronic solutions allow for flexible and individual combinations. CityLine combines all components of your parking management to one big unit.

SURVEILLANCE

Cloud-based system for parking time surveillance to optimize the utilization of your parking spaces: In real time by means of camera and/or sensors.

CityLine Modules:
Parking Space Operation | Number Plate Operation

PAGE18/19 Surveillance System HecSpot

PAY

For you as an operator and parking space user we offer user-friendly, stationary and mobile solutions to handle the payment process.

A safe investment, proven thousands of times and with great flexibility for customization in terms of system, function and design.

CityLine Modules:
Free Parking | Real-Time Parking | Dynamic Discount | Violation Ticket Service | Digital Receipt | Parking Space Operation | Number Plate Operation

- PAGE 12/13 Mobile Payment
- PAGE 14/15 Cashless Parking Machine CiteaPico
- PAGE 16/17 Parking Machine Citea



E-MOBILITY

At Hectronic, we have combined our experience from the areas of refuelling and parking to ensure that your entry into electromobility is a success. Flexibly combinable, individually adapted to your requirements and already compliant with the current charging station ordinance (LSV).

Designed as an open system, charging stations can be integrated via the standardised interface, regardless of manufacturer, and mapped at the CityLine management level.

CityLine Modules:
Parking Space Operation | Number Plate Operation

PAGE 20/21 Payment Terminal HecPay



CityLine – the Control Centre that Grows with Your Requirements.

Management Software CityLine

The browser-based management software convinces by easy operation, highest security standards and offers valuable support for your parking management. CityLine is a cross-platform solution which can be operated with tablet, notebook or smartphone.

The availability of the end devices in the field is monitored in real time and visualized for a lucid workplace. Each warning or error message is shown without delay and transmitted to the service staff (if necessary).

CityLine – Tool for your Process Optimization

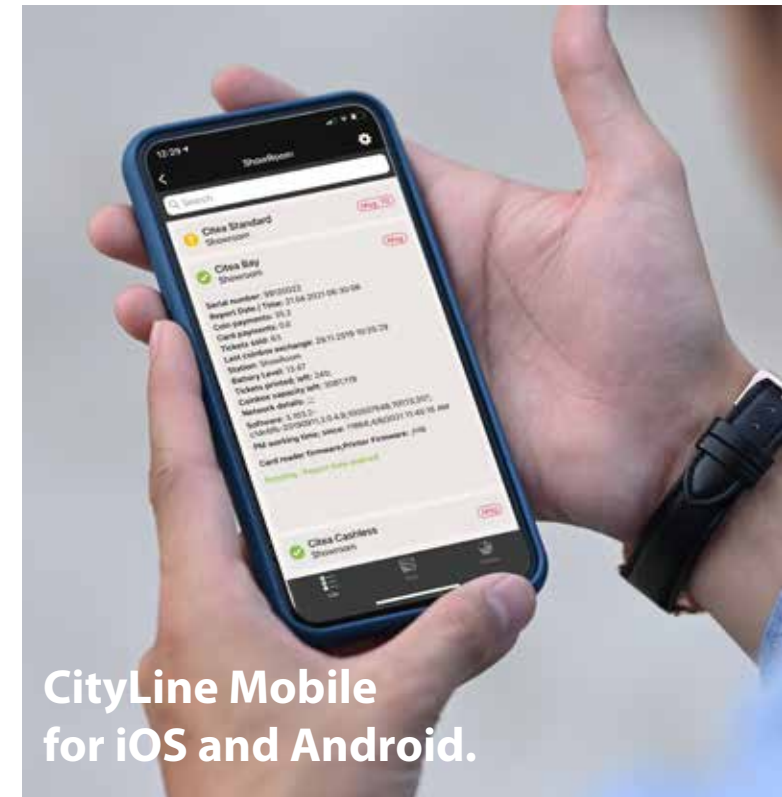
With CityLine processes such as service assignments and pick-up routes can be analysed, evaluated and optimized. Furthermore, CityLine supplies valuable indicators for your tariff design and optimization.

Basic Funktionen:

- ✓ **Configuration:** Setting and modification of parameters and tariffs
- ✓ **Statistics and Indicators:** Parking revenues, parking time, card transactions, manual or automatic export
- ✓ **Real-time Status Display:** Live monitoring of end devices
- ✓ **Installation:** No installation required

Advanced functions:

- ⊕ **CityLine modules:** Fast and flexible expansion to include modern payment and monitoring functions, see **page 6/7**
- ⊕ **Integration of third-party systems:** Via the standardised interface, vendor-independent systems can be mapped at the management level, see **page 8/9**
- ⊕ **Parking Operations Modul (POM):** Central monitoring and management of parking machines from various manufacturers, see **page 10/11**



CityLine Mobile for iOS and Android.

Your Benefits

- ✓ Control center for parking and service operations
- ✓ Configuration of settings
- ✓ Statistics and indicators for process optimization
- ✓ Real-time monitoring of end devices
- ✓ Open for third-party systems
- ✓ Highest security standard
- ✓ SaaS-solution (Software as a Service)



CityLine combines all areas and components to one big unit:



PAY

Payment processing with debit and credit cards, cash or mobile payment systems - CityLine covers all facets and can be implemented in conjunction with the Citea family and third-party solutions, see **pages 12-17**

SURVEILLANCE

Parking space monitoring for the efficient use and added value of your parking spaces - realisable in interaction with HecSpot, Citea and CiteaPico or connection of third-party systems, see **page 18/19**

E-MOBILITY

With our payment terminal, the entry into electromobility succeeds, already today compliant with the current charging station ordinance (LSV), see **page 20/21**

Further information on management software:
www.hectronic.com/cityline

CityLine Modules – Flexible Addition of Up-to-Date Payment and Surveillance Functions.

PAY

FREE
p

Free Parking

Free parking for parking space users: The identification is always made via number plate. The free parking time is defined in several intervals per day and allows for free parking in these periods.

If the free parking time is exceeded the parking space user can pay the additional parking fees, e.g. in combination with the optionally available service “number plate operation”.

Real-time Parking

Only when the parking time ends the parking fees are determined on the basis of the actual parking time.

The recording of the parking time begins with the check-in and ends exactly when the parking space user checks out again with their identification card. Only then the precise parking fee is calculated and securely debited from the driver’s account.

%
p

Dynamic Discount

Reduced parking fees for residents and authorized parking space users.

Regular customers and registered parking space users prove their identity, e.g. via ID-card, and benefit from a customized discount.

Violation Ticket Service

Allows the payment of penalty fees for parking violations directly at the parking ticket machine.

The driver enters the reference number into the parking ticket machine and directly pays the penalty fee. The reference number of the penalty notice is either generated by CityLine or by the service of a third-party provider.

The penalty fees for parking violations can be conveniently set in the back office and updated at any time.

Digital Receipt

Retrieve the receipt for parking fees paid online and save as PDF-file. This service allows parking space users to access receipts online.

By entering the card number and the number plate an overview of all relevant parking activities is shown. The parking space user can download the receipt as a PDF-file.

SURVEY

Parking Space Operation

Transfer of parking space occupancy from parking ticket machine to back office in real time.

The parking space user enters their parking bay number with the payment. On this basis the parking time and possibly its exceedance can be monitored.

Number Plate Operation

Transfer of the number plate from parking ticket machine to back office in real time.

The parking space user enters the number plate as means of identification for the payment. Via number plate the parking time and possibly its exceedance can be monitored.

One for All – Open Platform for the Connection of Third-party Systems

The parking services market has a strong regional character and is developing more dynamically than ever. It’s good that there is a system that grows flexibly with innovations and user habits and bundles all data in one place. This system is called CityLine and the key is the standardised interface (API).data in one place.



Standardised interface (API) for Third-party Systems

With CityLine, we have created an open platform that integrates all third-party systems - from parking machines, payment apps and number plate services to camera and sensor systems. The key is the standardised interface, based on state-of-the-art cloud technology and developed to the highest security standards.

Thanks to this interface, countless local systems and solutions can be integrated throughout Europe, as you can see in the overview on the right.

This variety of systems can basically be divided into three functional areas:

Machines & Charging Points & Payment Apps

Manufacturer-independent merging of parking or charging machines and payment apps within one system.

Number plate services

You choose the preferred solution, we integrate the payment process into your CityLine management system.

Number plate recognition

Integration of camera and barrier systems in combination with payment solutions contactless, via app or at the parking machine.

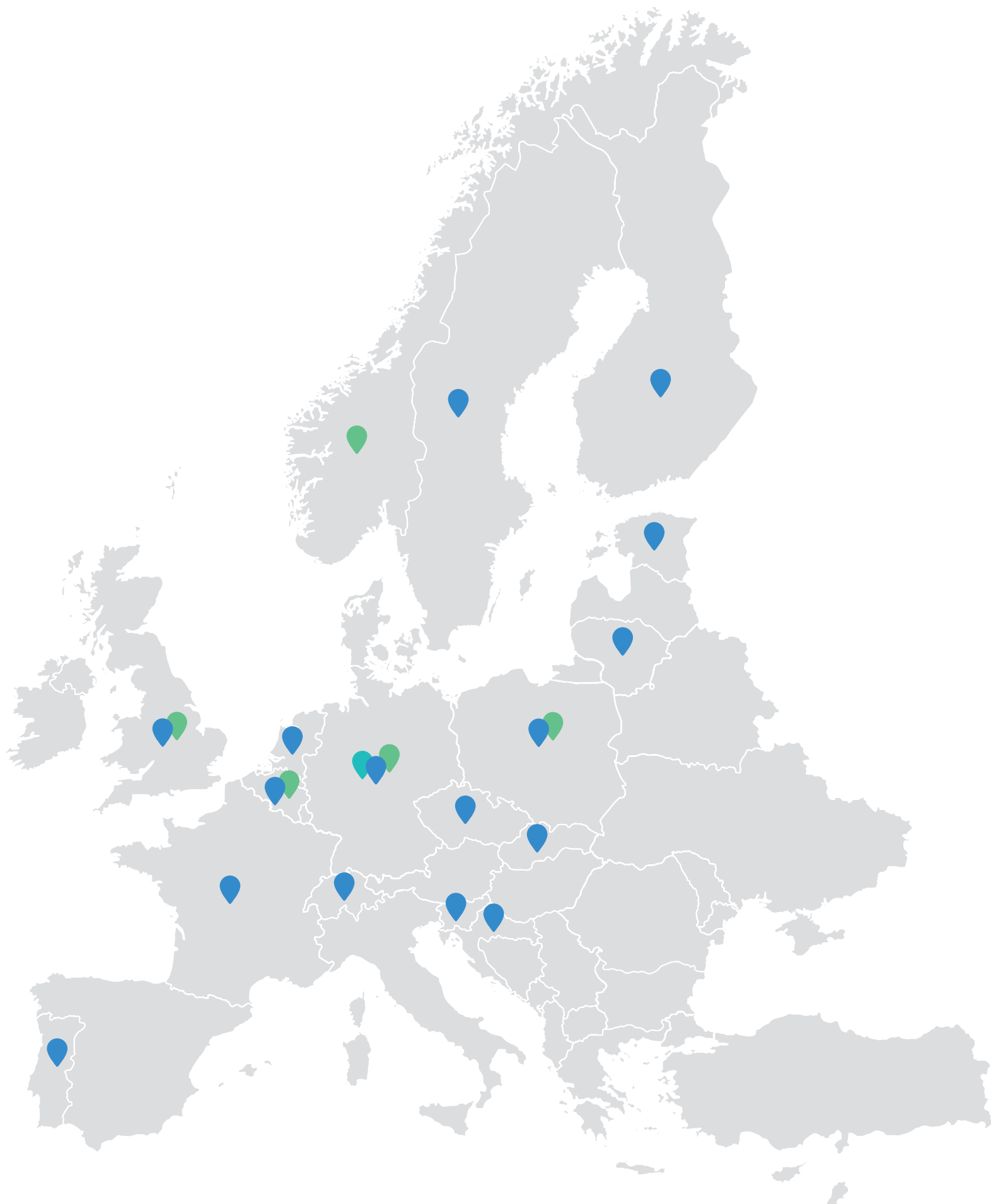
Central Administration via CityLine

All data is bundled on the administration level. You get a simple overview of various payment methods - regardless of the machine, the payment app, the mobile payment option or the manufacturer of the peripheral device.

All transactions are integrated and available via CityLine for comprehensive analyses and your reporting.

Enforcement Partner


Aggregated data masters in turn enable the central management of parking control (enforcement). The devices and systems of your enforcement partners can be integrated via the standardised interface.




Parking Operations Module (POM) – Efficient Maintenance Starts at the Management Level

POM aggregates the data of all parking machines in your system - manufacturer-independent and clearly displayed in the CityLine interface. With POM you can look forward to simplified and more efficient operation of your parking machines!


Functions of the Parking Operations Module (POM)




Monitoring of the machines




Parking machines from all manufacturers



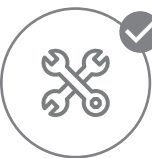
Ticket system for tasks




History of all parking operations




Visualise and evaluate data



Maintenance and cleaning



Cash emptying & cash transport



Machine history

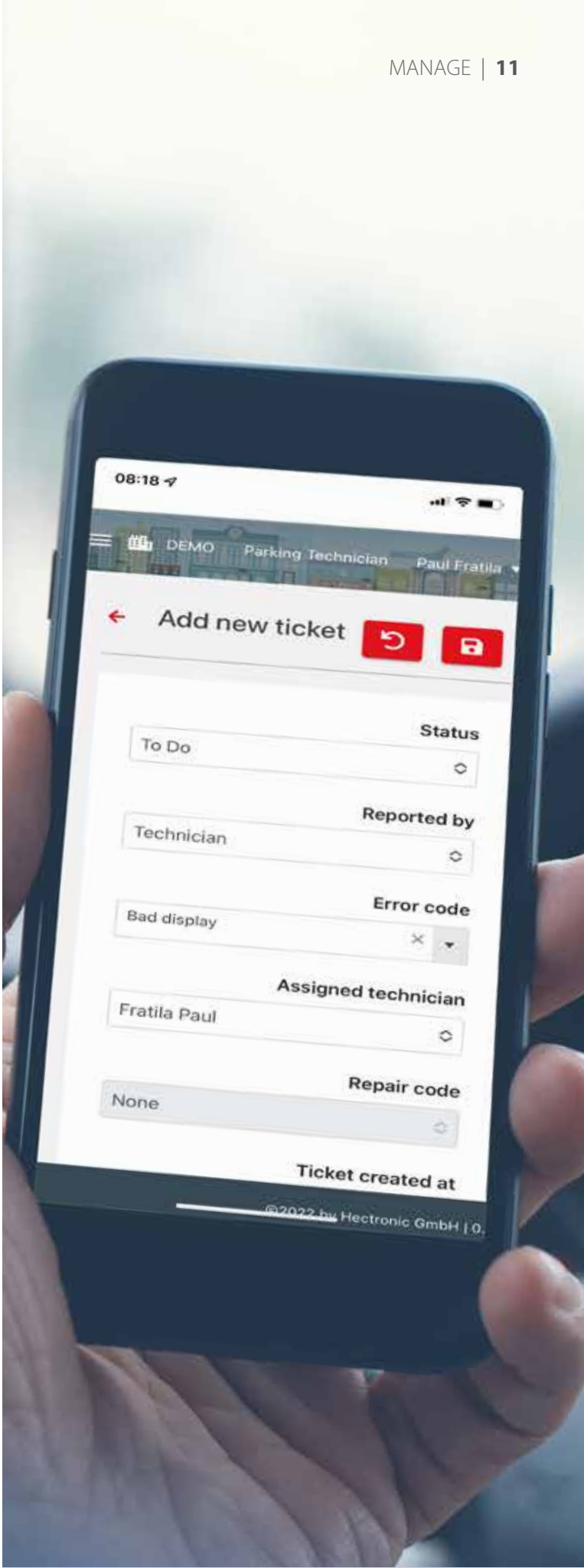
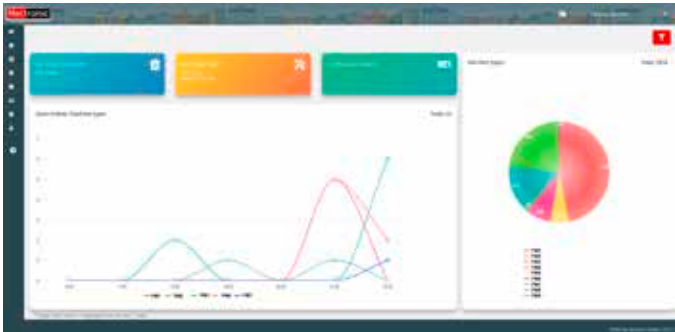
Do you manage parking machines from different manufacturers in your system?

Then POM is exactly the right solution. This module allows you to monitor and manage all your parking machines from a central point. POM bundles the data of your parking machines and visualises them on a clear dashboard, integrated in the Management Software CityLine. As a result, this makes your work easier and reveals optimisation potentials of your systems in the field in a direct comparison.

As a user, you also benefit from many practical functions, such as the ticket system for tasks, maintenance alerts and the history of parking processes and machines.

POM is a web-based cloud solution which is integrated into CityLine as a separate module and delivered as a user-friendly web interface. Your service technician is connected via the CityLine Mobile App and can perform activities and deactivate messages on site.

The clear dashboard



Your Benefits

- ✓ User-friendly, mobile and contactless payment with the smartphone
- ✓ Flexible integration - also in interaction with parking machines and payment terminals
- ✓ Central administration, configuration, statistics and key figures across all integrated systems
- ✓ For you as the operator, there is no need for cash handling
- ✓ Fewer break-ins at machines
- ✓ Independent app solutions and future-proof technology



Mobile Payment – Offering Your Parking Customers Solutions for Today and Tomorrow.

Mobile Payment of Parking Tickets

Cashless payment is on the rise and Corona has once again given this trend a powerful boost. You can satisfy the desire to pay quickly and contactlessly when managing your parking areas - more easily and flexibly than ever before! Our systems integrate a variety of mobile payment options:

- ✓ Mobile via Apple Pay, Google Pay or Twint, contactless at the parking machine
- ✓ Mobile via payment apps of favoured third-party providers, see also page 8/9

You decide on the payment function, we integrate it into your system. Interaction with existing parking machines is a standard feature. Via the standardised interface, we bring together all data at the administration level. From now on, all parameters and tariffs can be configured centrally. Statistics on transactions or key figures on parking revenue and parking duration are available at any time and across platforms in real time.



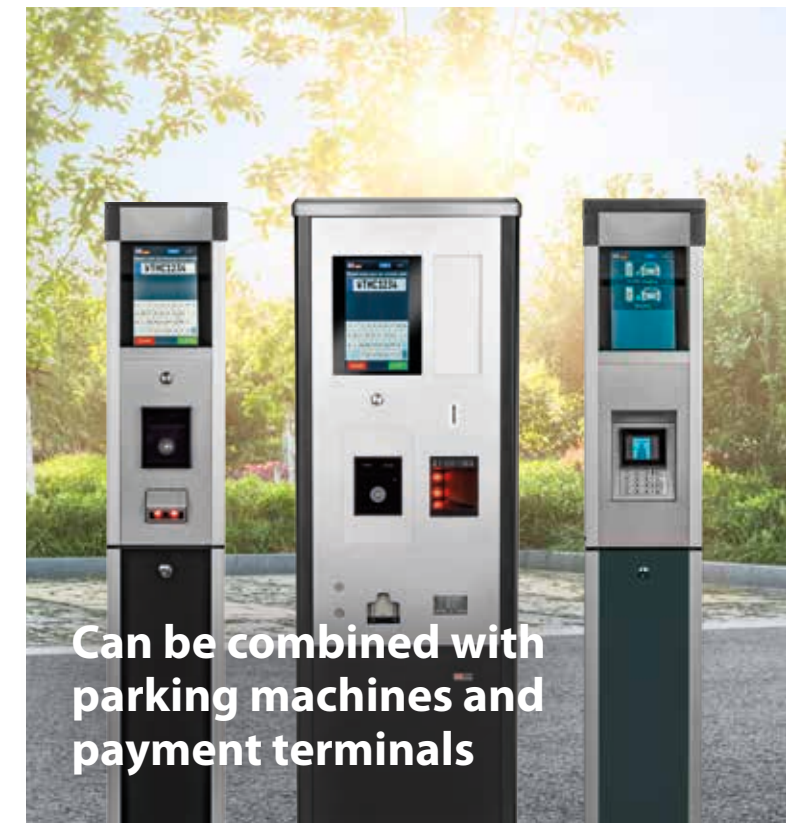
Pages 4 – 11

Remote Management and Central Administration:

CityLine visualises configuration, statistics, key figures, real-time status display at the management level and integrates third-party systems such as payment apps via the standardised interface.

CityLine Modules:

- ⊕ Free Parking
- ⊕ Real-time Parking
- ⊕ Violation Ticket Service
- ⊕ Dynamic Discount
- ⊕ Digital Receipt



Machines and terminals are designed for mobile payment



Parking Machine CiteaPico

Cashless parking machine, see page 14/15

Parking Machine Citea

The classic parking machine is ready for the future, see page 16/17

Payment Terminal HecPay

The barrier-free payment terminal HecPay already complies with the requirements of the charging station ordinance (LSV), see page 20/21

Further information on www.hectronic.com

Your Benefits

- ✓ Cost-efficient to purchase and economic
- ✓ Elegant, robust and customizable housing
- ✓ Remote maintenance at any time and from any place via cloud
- ✓ Comprehensive after-sales service: Support hotline, employee training and repair centre



CiteaPico – Cashless, Economic, Good.

Cashless Parking Machine CiteaPico

The future begins now. Here comes the cashless parking machine - a solution with head and foot.

Functional, economic, sustainable - corresponds to the "zeitgeist" and fits elegantly into modern cityscapes.

Customers can pay by card or contactless with mobile phone. The user guidance is realized by a large and very robust touch display. Upon successful payment process the ticket can be issued by SMS or e-mail.

Everything It Takes (But Nothing More)

The CiteaPico is small and compact, thus cost-efficient to purchase and economic to operate. After all, it is not necessary to replace paper rolls or coin boxes. With fewer rides personnel costs can be reduced. If, however, maintenance becomes necessary the upper part, i.e. the head of CiteaPico, can be removed.



Pages 4 – 11

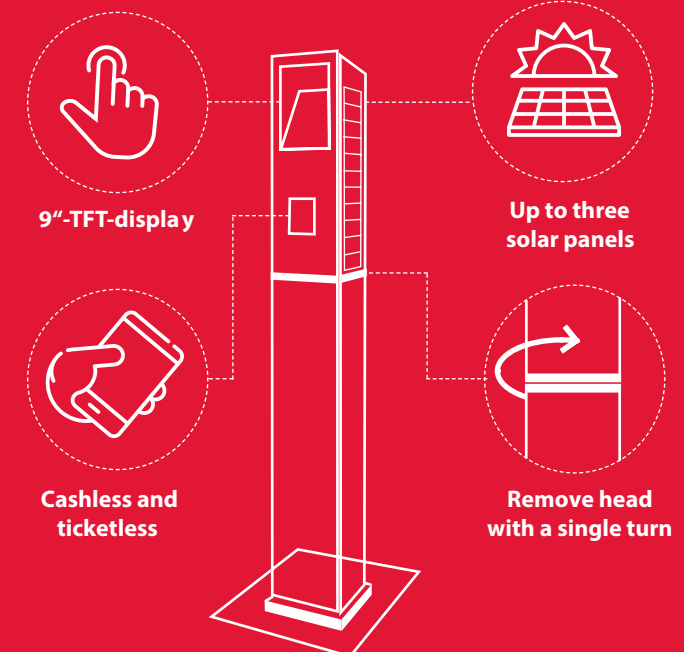
Remote Management and Central Administration:

CityLine visualises configuration, statistics, key figures, real-time status display at the management level and integrates third-party systems such as payment apps via the standardised interface.

CityLine Modules:

- | | |
|----------------------------|--------------------|
| ⊕ Free Parking | ⊕ Dynamic Discount |
| ⊕ Real-time Parking | ⊕ Digital Receipt |
| ⊕ Violation Ticket Service | |

Functionalities:



Individual Configuration Options for Parking Machine CiteaPico



Payment Options

Cashless with card terminal or contactless unit, ticketless, mobile payment authorization.

Two-Component Design

The independent components (head and foot) allow for flexible integration into the street furniture.

Individual Design

Housing color selectable, optionally with advertisement.

Display and Communication

9"-TFT-Display, touch flow and language configurable, 2G-/4G-modem communication or LAN connection.

Power Supply

Up to three solar panels (14 Wp each), at the side of the head housing, battery (28 Ah) in the foot.

Further information on cashless parking machine
www.hectronic.com/citeapico

Your Benefits

- ✓ Easy and intuitive operation
- ✓ Highly suitable for individualization (function and design)
- ✓ Remote maintenance at any time and from any place via cloud
- ✓ Comprehensive after-sales service: Support hotline, employee training and repair centre

Citea – The parking machine for all payment options.

Parking Ticket Machine Citea

Thanks to its modular design and flexible system components the Citea allows for flexible configuration according to your needs and requirements. In the management of gated parking spaces the Citea can put its advantages as a pay station to full use.

You can always rely on excellent quality and reliability. Not the least due to its sturdy aluminium housing the Citea has proven itself thousands of times - cities and municipalities worldwide count on the flexible system.

Citea as a Universal Pay Station

Citea can be adapted as a universal pay station and utilized wherever (entrance) fees are charged.



Pages 4 – 11

Remote Management and Central Administration:

CityLine visualises configuration, statistics, key figures, real-time status display at the management level and integrates third-party systems such as payment apps via the standardised interface.

CityLine Modules:

- | | |
|----------------------------|--------------------|
| ⊕ Free Parking | ⊕ Dynamic Discount |
| ⊕ Real-time Parking | ⊕ Digital Receipt |
| ⊕ Violation Ticket Service | |



**Citea with
Solar Cover**

Individual Configuration Options for Parking Ticket Machine Citea



Security:

Anti-graffiti coating, vandalism protection, safe for self-locking coin cassette, compartment for banknotes.

Display and Communication:

TFT-touch- or LCD-display, language selectable, 2G-/4G-modem communication, LAN-connection.

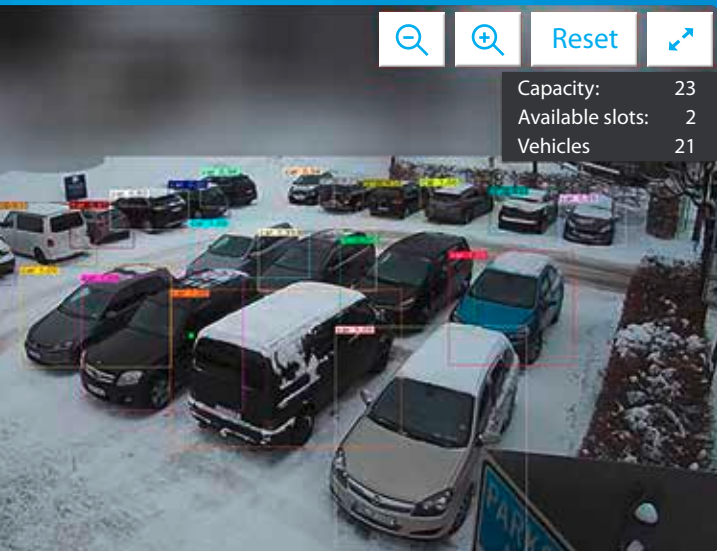
Payment Option and Operation:

Coins, optional with banknote reader, cashless systems (debit and credit card, with/without PIN-pad, contactless unit), ticketless, mobile payment authorization

Environment-friendly:

Solar supply with 14.2 Wp (internal), optional also with 39 Wp (internal and external), optimized for weak light.

Further information on payment systems:
www.hectronic.com/citea



Your Benefits

- ✓ Detect and identify parking space utilization in real time, increase efficiency
- ✓ Utilization even at night or with snow-clad parking spaces
- ✓ Dynamic use of tariffs
- ✓ Cost-savings by targeted parking space inspections
- ✓ Less search traffic and noise pollution
- ✓ Quick installation
- ✓ Open interface for the automatic transmission of occupancy data
- ✓ Comprehensive after-sales service: Support hotline, employee training and repair centre



HecSpot – The Decisive Glimpse Ahead.

Surveillance System HecSpot

The cloud-based surveillance system HecSpot provides real-time information on the parking space occupancy to your PC or smartphone and valuable forecasts for the parking space occupancy to be expected. This knowledge can be used for controlling the parking search traffic and parking space inspections but also to optimize the economic efficiency of your object, e.g. by a dynamic use of tariffs.

Functional Principle

Surveillance cameras generate the database and send snapshots to a cloud-based server with algorithmic processing. An interface allows for the data communication with third-party systems. Feasible are parking space information signs, guidance systems or apps. As a pay station the Citea can be integrated and individually configured (see diagram on the right).



Pages 4 – 11

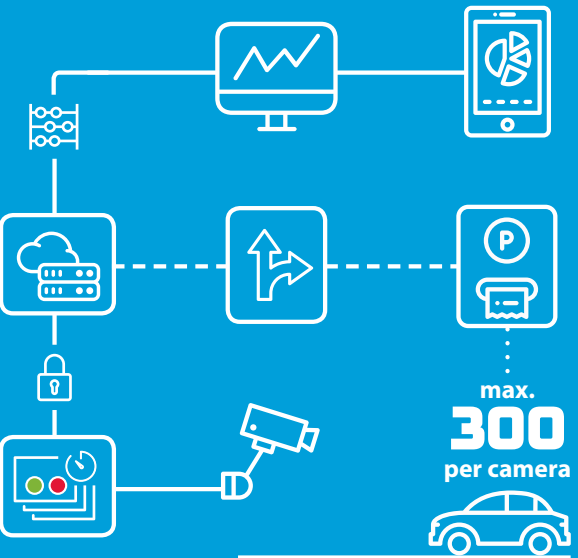
Remote Management and Central Administration:

CityLine visualises configuration, statistics, key figures, real-time status display at the management level and integrates third-party systems such as payment apps via the standardised interface.

CityLine Modules:

- + Parking space operation
- + LPN Service

Functional Principle HecSpot:



Application Scenarios HecSpot



HecSpot + Camera/Sensor + CityLine:

Parking space occupancy in real time, incl. display of parking duration. Provision of statistics and resulting tendencies for the parking space occupancy.

HecSpot + Camera/Sensor + CityLine + Citea:

Additional real-time surveillance of your parking space and resulting identification of paid parking bays and parking bays without ticket.

HecSpot + Camera/Sensor + CityLine + Traffic Guidance Systems (Third-party Systems):

In addition, information from the parking space surveillance is transmitted to the traffic guidance system and displayed to control the parking search traffic.

Further information on the surveillance system:
www.hectronic.com/hecspt

Your Benefits

- ✓ One payment terminal for several charging points
- ✓ Considerable cost reduction
- ✓ Contactless and cashless payment/ authorization methods that enable barrier-free payment in accordance with the German Charging Station Ordinance (LSV)
- ✓ Standard connection via OCPP
- ✓ Compatible with all common charging stations and backend management systems
- ✓ Robust housing and display for outdoor installation



HecPay – Authorize Numerous Charging Points without Barriers.

Scope of application

Public charging (customer car parks, on-street charging, urban charging and charging parks on traffic axes) is where HecPay excels.

The terminal offers a central payment solution for numerous charging points. It enables a barrier-free payment process in accordance with the German Charging Station Ordinance (LSV). With HecPay, you can efficiently update your charging infrastructure – regardless of the backend management system and charging station type you use.

Individualization through flexible modules

The HecPay has a wide range of customization options and thus the greatest possible flexibility.

- 9" TFT display
- Credit & debit cards
- Charge cards
- Digital receipt
- For n charging points
- Mobile Payment & Authorization System easy2fuel



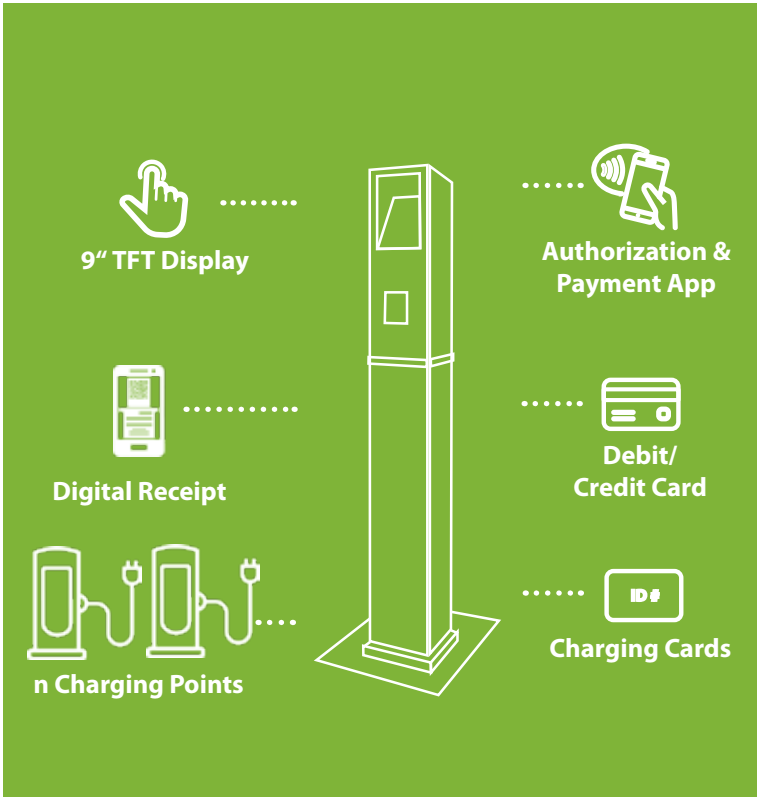
Pages 4 – 11

Remote Management and Central Administration:

CityLine visualises configuration, statistics, key figures, real-time status display at the management level and integrates third-party systems such as payment apps via the standardised interface.

CityLine Modules:

- ⊕ Parking space operation
- ⊕ LPN Service



HecPay is compatible with:



Mobile Payment:
Accelerate the charging process, see **Page 12/13**

Further information on the Payment Terminal
HecPay: www.hectronic.com/hecpay



**With us,
you are in focus!**



We take care of your special requirements – quickly, flexibly and individually. Our sales partners provide support at eye level and find the optimum solution together with you.

Your Satisfaction is our Goal

Competent, comprehensive, at eye level and in your vicinity - together with you we set up your perfectly attuned parking space management or extend your existing system.

Our solutions from the areas **MANAGE**, **PAY**, **SURVEILLANCE** and **E-MOBILITY** cover the full spectrum and allow for flexible and individual combination, integration and scaling.

Our smart software solutions complement the proven hardware components and open up new possibilities with respect to economic efficiency and user-friendliness.

As a reliable partner we stand for solutions with added value and invest into the development of new and practicable systems you can rely on - your satisfaction is our goal. For 50 years solutions from Hectronic have been standing for quality. We wish to keep it that way!

Security and Reliability

It is our goal to be your helpful contact partner – at any time, on site at your location, before and after sales.

We support you worldwide with competent advice and through our reliable support hotlines. An international service and distribution network with over 70 partners provides you with absolute security and reliability – always in your vicinity.

Our repair centre is specialised in repairs, guarantee and warranty claims and their prompt processing.

Trainings by Hectronic qualify your staff to make full use of and apply the potential of Hectronic's technology.

Numerous operators with different application scenarios rely on our solutions:

- **Cities and Municipalities**
- **Multi-storey Car Parks (public/private)**
- **Hotels and Restaurants**
- **Shopping Centres and Amusement Parks**
- **Airports**
- **Hospitals**

See references:
www.hectronic.com/references

Hectronic GmbH

Allmendstrasse 15
D-79848 Bonndorf
Tel. +49 7703 9388-0
mail@hectronic.com

Hectronic Schweiz AG

Aarauersstraße 69
CH-5200 Brugg
Tel. +41 56 46074-74
mail@hectronic.ch

Hectronic Austria GmbH

Hobelweg 4
A-4055 Pucking
Tel. +43 7229 23808-0
mail@hectronic.at

Hectronic Vertriebs- und Service GmbH**Branch Office RheinRuhr**

Paul-Reusch-Straße 10
D-46045 Oberhausen
Tel. +49 208 40952-00
info@hectronic.de

Branch Office North

Parallelweg 30
D-28219 Bremen
Tel. +49 421 696814-00
info@hectronic.de

Branch Offices East

Carl-Scheele-Straße 16
D-12489 Berlin-Adlershof
Tel. +49 30 6392526-0
info@hectronic.de

Branch Mannheim

Lechstrasse 5
D-68199 Mannheim
Tel. +49 621 8453-149
info@hectronic.de

Otto-Hahn-Strasse 3-5
D-37574 Einbeck
Tel. +49 5561 31997-49
info@hectronic.de

Handelsplatz 4
D-04319 Leipzig
Tel. +49 341 561113-53
info@hectronic.de

Hectronic France Sarl

5, Boulevard de Créteil
F-94100 Saint-Maur-des-Fossés
Tel. +33 1 418111-12
mail@hectronic.fr

Hectronic Polska Sp. z o.o.

Bór 164
PL-42-200 Częstochowa
Tel. +48 34 3697373
mail@hectronic.pl

Hectronic India Retail & Parking Automation Pvt. Ltd.

No. P6, 1st Cross, 3rd Stage
IND-560058 Bangalore
Tel. +91 80 283633-08
mail@hectronic.in

Your sales partner: