

ROSEEK Product Guide



www.roseek.com

Contents

- [About ROSEEK Company](#)
- [ITS Products](#)
 - ◆ [All-in-one Smart Camera](#)
 - ◆ [Box Smart Camera](#)
 - ◆ [Integrated Camera Housing](#)
 - ◆ [LED Strokes](#)
- [Railway Products](#)
 - ◆ [Smart Camera](#)
- [SONY Image Sensor Agent](#)

About ROSEEK Company

- ROSEEK was founded in 2006 with headquarter in Shanghai, China
- Focus on embedded machine vision equipment
- Main business

ITS (Intelligent Transportation System)

Railway inspection products

SONY image sensor agent



ITS Cameras Features

- Global shutter camera from 1.6MP to 127 MP
- Open platform x86 smart camera by INTEL CPU
- Supports Windows 10 IoT and Linux Ubuntu
- Powerful AI inference performance
- Powerful ITS ISP by FPGA
- Wide operational temperature range: -40 to +80°C
- 15 years of ITS professional experience
- More than 100,000 ITS smart cameras are running in more than 20 countries at this moment

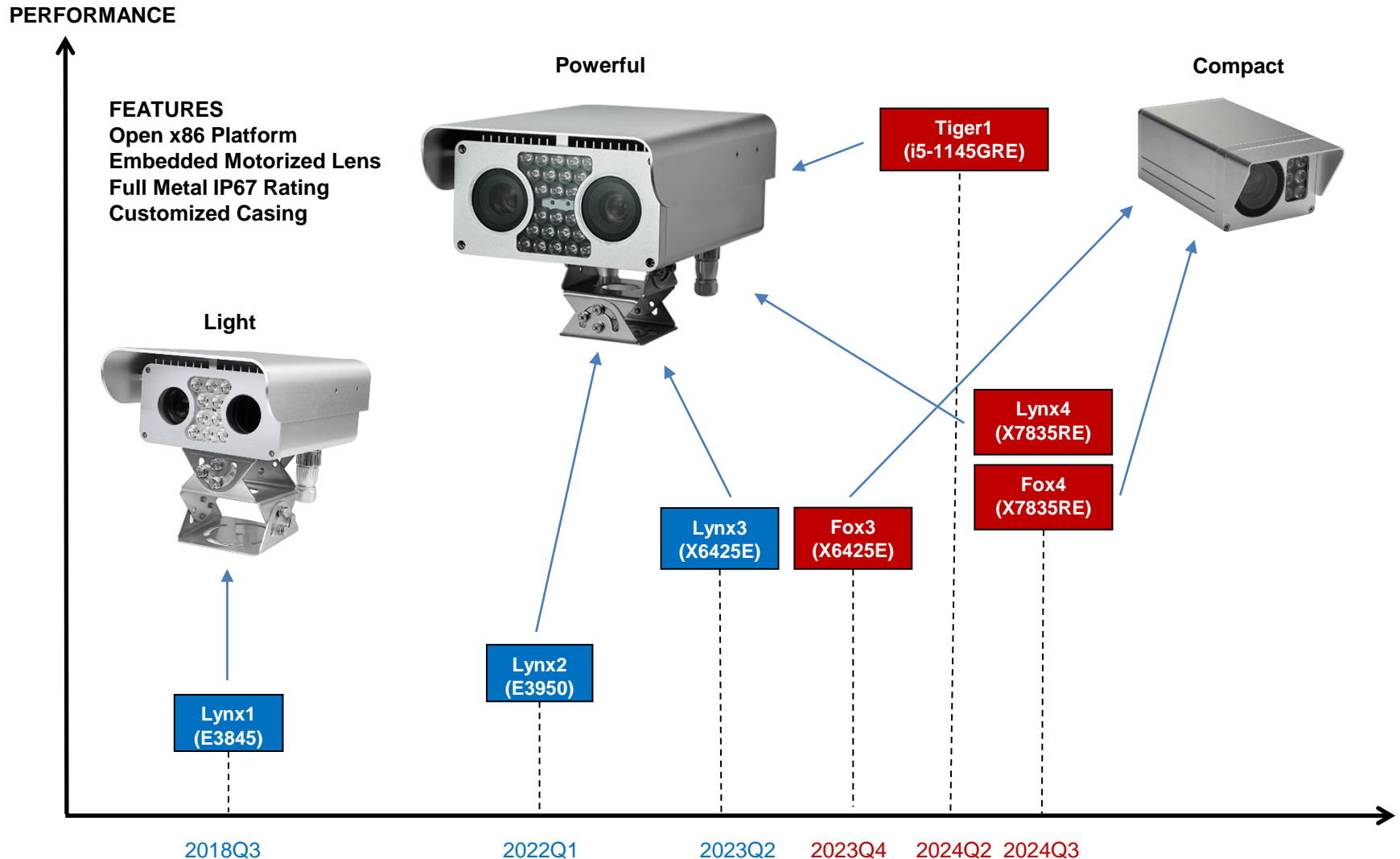


All-in-one Smart Camera - Overview



Item	Lynx1	Lynx2	Lynx3	Tiger1	Fox3
Launch Date	2018Q3	2022Q1	2023Q2	2024Q2	2023Q4
Sensor	1.6 to 8.9MP	1.6 to 20MP	1.6 to 20MP	2 to 127MP	1.6 to 20MP
CPU Type	E3845	E3950	X6425E	i5-1145GRE	X6425E
DDR	4GB	8GB	8GB	16GB	8GB
AI performance	NA	1.5 TOPs	4 TOPs	15 TOPs	4 TOPs
LED Strobe	9/10 LED	24/30 LED	24/30 LED	24/30 LED	8 LED
Features	Light	Sync Sensors	AI performance	Powerful	Compact

All-in-one Smart Camera - Roadmap



Box Smart Camera



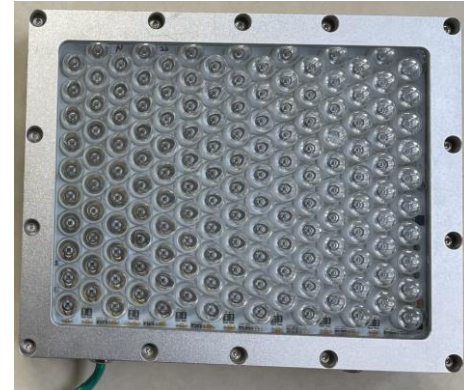
Item	<u>Cheetah1</u>	<u>Cheetah2</u>	<u>Cheetah3</u>	<u>Sparrow2</u>
Launch Date	2015Q3	2020Q1	2022Q3	2021Q1
Sensor	1.6 to 8.9MP	1.6 to 20MP	1.6 to 20MP	1.6 to 2MP
CPU Type	X86: E3845	X86: E3950	X86: X6425E	ARM: MIMX8MM6
DDR	4GB	4GB	8GB	1GB
AI performance	NA	1.5 TOPs	4 TOPs	NA
Features	1 st X86 smart camera	CPU performance	AI performance	ARM-based
Status	Not recommended	Mainstream	Promotion	Cost-effective

Integrated Camera Housing



Item	<u>TreeFrog1</u>	<u>TreeFrog3</u>
Launch Date	2012Q1	2018Q2
Camera Position	1	2
LED Strobe	6/12 LED	12/23 LED
Power Supply	24VDC/48VDC/85~265VAC	24VDC/48VDC
Features	85~265VAC switch power Motorized lens drivers	5-port giga-Ethernet switch Motorized lens drivers
Status	Active	Active

LED Strobes



Item	<u>Squirrel1</u>	<u>Squirrel2</u>
Launch Date	2017Q4	2022Q4
LED Chip Quantity	48	150
LED Pulsed Power	220W for NIR flash 480W for white flash 153W for far-red flash	1980W for NIR flash 2160W for white flash 690W for far-red flash
Power Supply	24VDC/150W	48VDC/500W
Features	Cost-effective	High brightness
Status	Active	Active

Railway Cameras Features

- Global shutter camera from 1.6MP to 127 MP
- Open platform x86 smart camera by INTEL CPU
- Supports Windows 10 IoT
- Seamlessly interface with each other
- Wide operational temperature range: -40 to +80°C
- IP67 rating, shockproof



Railway Smart Camera – Lizard3 Series

- Embedded x86 industrial PC
- SONY high-speed global shutter CMOS sensors
- Embedded motorized high-resolution lens
- Embedded high-power LED strobes flash
- Embedded isolated power module
- IP67 rating, shockproof

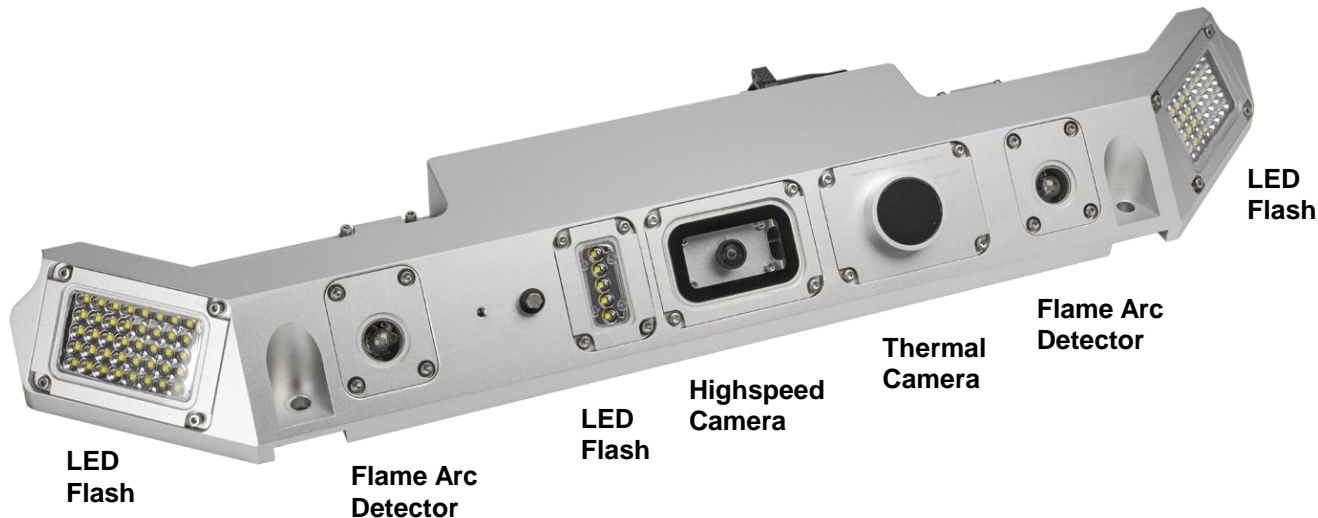
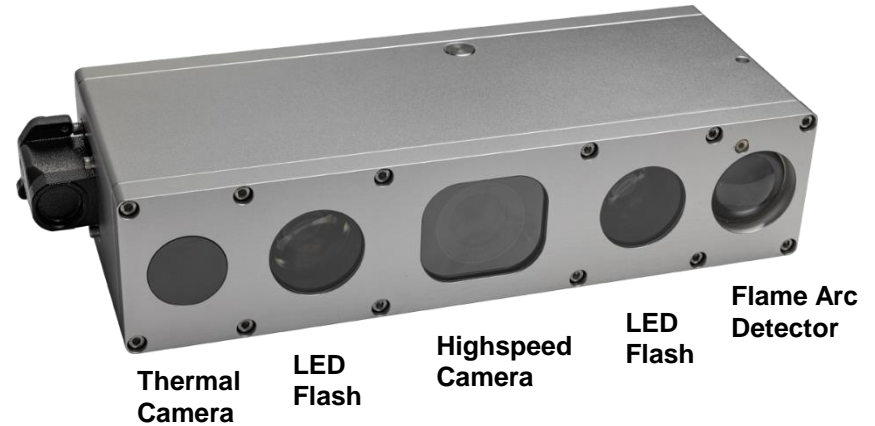


Railway Smart Camera – Lizard3 Series

Code	Pixel Number	Frame Rate (FPS)	Resolution	Optical Size (Inch)	Pixel Size (um)	Match Lens (code)	Note
21	2.8MP	409	1936×1464	2/3	4.5	B5	
51	5.1MP	250	2448×2048	1/1.8	2.74	B5	
71	7.1MP	200	3208×2200	1.1	4.5	TT, SF	
R0	24MP	35	5328×4608	1.2	2.74	SF	
R1	24MP	60	5328×4608	1.2	2.74	SF	
T0	31MP	35	6464×4852	1.8	3.45	28, 35, 55	
T3	65MP	14	9344x7000	2.3	3.2	55	
V1	127MP	8.6	13392x9528	3.6	3.45	55	
V3	150MP	5.8	16556x9200	3.8	3.2	55	

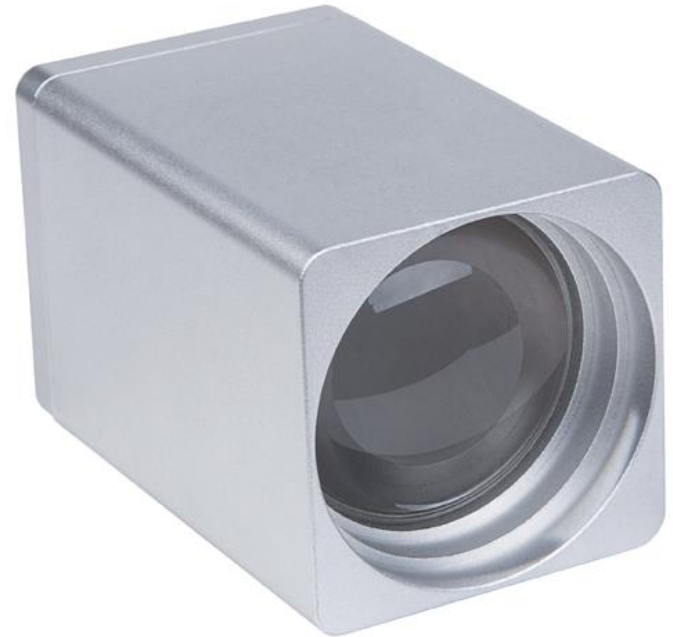
Railway Smart Camera – Mantis3 Series

- Embedded x86 industrial PC
- SONY high-speed global shutter CMOS sensors
5.1MP/250fps, 2448×2048, 2.74um
- Embedded Pantograph Flame Arc Detector
- Embedded LED strobes flash
- Embedded M12 lens
- Power Supply 110VDC
- Extremely low product height
- IP67 rating, shockproof



Railway Pantograph Flame Arc Detector - Bee1 Series

- Sensitive detection of pantograph flame arc within 8 meters
- Only sensitive to the solar blind zone (185-260nm) in the deep ultraviolet band to prevent false triggering
- Fast Ethernet port and isolated RS485 interface, output the start and end time of arcing event, and arc intensity information
- One opto-coupler port, real-time output arcing status
- Seamlessly interface with Spider1 Ethernet switch
- IP67 rating



Railway Products Integration Example



SONY Image Sensor Agent

- The agent of SONY industrial image sensors: Mainland China, Hong Kong, Macau
- Powerful technical support
- Good cooperative relationship with SONY for 16 years
- The only VAR (value-added reseller) of SONY in the world in the field of CMOS image sensors

SONY

Sony Corporation of Hong Kong Limited
Suits 702, 7/F, Exchange Tower, 33 Wang Chiu Road, Kowloon Bay, Kowloon, Hong Kong
Telephone (852) 2909 1111 Fax: (852) 2909 2222

Date: 20th July, 2017

To: The Potential Customers of the Products

We hereby confirm that we have designated and appointed SHANGHAI RUISEI MACHINE VISION TECHNOLOGY CO., LTD. ("Machine Vision") with its registered office at 11F, No.248, Daxue Rd., Shanghai 200433, China, as our non-exclusive value-added reseller of the Products (as defined below) of SONY HK to its end-customers in People's Republic of China (including Hong Kong SAR, Macau SAR but excluding Taiwan) during the period from 1 April 2017 to 31 March 2018.

"Products" mean GS CMOS image sensors related devices for Machine Vision manufactured for SONY HK or SONY CORPORATION, an affiliated company of SONY HK in Japan, of which models shall from time to time be designated by SONY HK in writing.



Electronic Devices Marketing Hong Kong Company
Sony Corporation of Hong Kong Limited



End