



stainless steel convex mirrors



www.convexmirror.guru



Founded in 2010, Steel Crafts Europa S.r.l. (SCE) has been created to provide directly to European, Middle East and North African markets our top quality Stainless Steel Convex Mirrors.

Furthermore, with its strategic location in the North of Italy, SCE guarantees its customers efficient sales and after sales services with a quick delivery time.

SCE was built on the success of its sister company Ever Grow Advanced Material.

With more than 10 years of experience in stainless steel mirrors manufacturing and a capacity of more than 70.000 Mirrors pcs/year, we have evolved into one of the leading manufacturers of premium Stainless Steel Convex Mirrors.

Advanced technologies, highly efficient quality controls and the continuous research and development of new and customized solutions are the main drivers of our commitment in fulfilling our customers' needs.



SCE Stainless Steel Convex Mirrors

SCE Stainless Steel Convex Mirror superior quality has been widely accepted and recognized by countries across the world.

The SCE Stainless Steel Convex Mirror, providing the best viewing effect is engineered to withstand extreme outdoor weather conditions. It is the ideal solution for areas with high risk of vandalism, pilferage, or aggressive industrial chemical atmosphere, given its outstanding weather and impact resistance. Our Stainless Steel Convex Mirror can be easily installed at road intersections and parking lots where there is a severe risk of accidental breakage.

The SCE Stainless Steel Convex Mirror is virtually unbreakable and requires minimal maintenance, therefore, it produces cost effective results in the long run when compared to other materials that may require regular maintenance or replacement. It has been rapidly replacing mirrors made of other materials for both indoor and outdoor applications for the above reasons.

With state of the art technology as well as skilled workforce and superior services, we continue to strive to be the most prominent player in the world of convex mirrors industry. We strongly believed that our product can contribute in building a safer and more secure community.

Why to use Stainless Steel Convex Mirrors

Material	Weather Resistant	Impact Resistant	Reflectiveness	Stainless Steel Over Others
STAINLESS STEEL	★★★★★	★★★★★	★★★★★	The reflectiveness of Stainless Steel increases over time
Acrylic	★★★	★★	★★★★★	
Polycarbonate	★★	★★★★★	★★★★★	
Glass	★★	★	★★★★★	

Remark: *****Best; ****Good; ***Normal; **Poor; *Very Poor

Source: PIARC Committee on Road Safety. Japan's Traffic Mirror Guide



stainless steel convex mirrors

Outdoor stainless steel convex mirrors

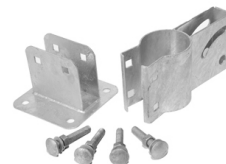


Accessories

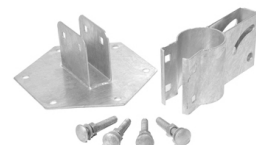
Wall/Pole Brackets (1 - 2) Ø50mm



Pole Brackets (3 - 4 - 6 - 7) Ø76mm o Ø60mm



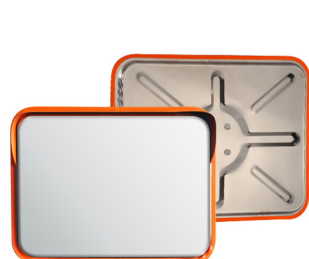
Pole Brackets (5) Ø76mm o Ø60mm



Wall Brackets (3 - 4 - 5 - 6 - 7) Only available for Ø76mm pole brackets



- Suitable for road safety, industrial and warehouses security, surveillance purposes, etc...
- Stainless steel lenses perfectly polished, virtually unbreakable
- Orange PVC protective ring, UV resistant
- Orange sun shade in polycarbonate (round mirrors) or stainless steel (rectangular mirrors).
- Mirrors back in stainless steel or GI plate
- Easy to be cleaned, require minimal to no maintenance
- Rectangular mirrors provide wider field of view



(6) **450x600mm**
17,72x23,62 inches



(7) **600x800mm**
23,62x31,50 inches



(1) **320mm**
12,60 inches



(2) **490mm**
19,30 inches



(3) **600mm**
23,62 inches



(4) **800mm**
31,49 inches



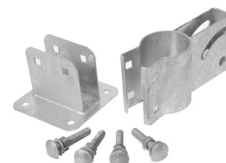
(5) **1000mm**
39,37 inches

ABS stainless steel convex mirrors



Accessories

Pole Brackets (10 - 11 - 12 - 13)
Ø76mm o Ø60mm



Wall Brackets (10 - 11 - 12 - 13)
Only available for Ø76mm
pole brackets



- Suitable for road and traffic safety, industrial and warehouses security, surveillance purposes.
- Stainless steel lenses perfectly polished, virtually unbreakable
- Frame and back in ABS Plastic, shockproof and UV resistant
- ABS plastic frame provided with red reflective stickers
- Easy to be cleaned, require minimal to no maintenance
- Rectangular mirrors provide wider field of view



(10)
600mm
23,62 inches



(11)
800mm
31,49 inches



(12)
450x600mm
17,72x23,62 inches



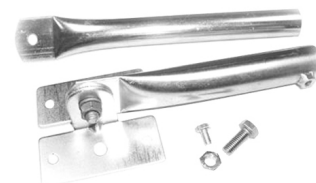
(13)
600x800mm
23,62x31,50 inches

Indoor stainless steel convex mirrors



Accessories

Wall Brackets (8 - 9)



- Suitable for Indoor usage, internal parking lot, supermarkets, surveillance purposes, etc...
- Stainless steel perfectly polished, virtually unbreakable
- Black PVC protective ring
- Back stainless steel crossed section: efficient and light
- Easy to be cleaned, require minimal to no maintenance



(8)
490mm
19,30 inches

(9)
600mm
23,62 inches

Anti Freeze stainless steel convex mirrors



Accessories

Universal Pole Brackets (14 - 15)
 Ø 60mm - Ø 76mm - Ø 90mm



- Anti freeze technology that prevents ice and condensation
- No electricity nor solar energy needed
- Suitable for road and traffic safety, industrial and warehouses security, surveillance purposes
- Stainless steel lenses perfectly polished, virtually unbreakable
- Rectangular mirrors provide wider field of view

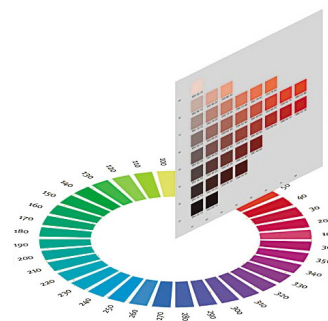


(14) **600mm**
23,62 inches



(15) **600x800mm**
23,62x31,50 inches

Customized stainless steel convex mirrors



- Suitable for all surveillance purposes
- Stainless steel lenses perfectly polished, virtually unbreakable
- Mirrors back in stainless steel or GI plate
- Easy to be cleaned, require minimal to no maintenance
- PVC protective ring and sun shade customizable upon request in any color
- Stainless Steel Lenses availability



450x600mm
17,72x23,62 inches



600x800mm
23,62x31,50 inches



320mm
12,60 inches



490mm
19,30 inches



600mm
23,62 inches



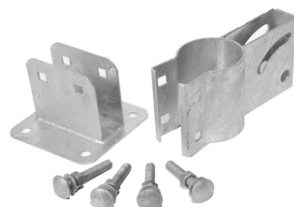
800mm
31,49 inches



1000mm
39,37 inches



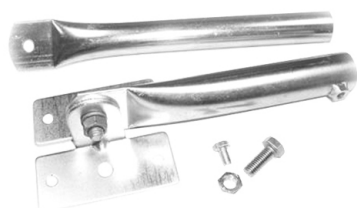
Wall/Pole Brackets
Ø50mm
(1 - 2)



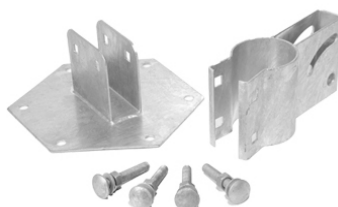
Pole Brackets
Ø76mm o Ø60mm
(3 - 4 - 6 - 7 - 10 - 11 - 12 - 13)



Wall Brackets
Only available for Ø76mm pole brackets
(3 - 4 - 5 - 6 - 7 - 10 - 11 - 12 - 13)



Wall Brackets
(8 - 9)



Pole Brackets
Ø76mm o Ø60mm
(5)



Universal Pole Brackets
Ø 60mm - Ø 76mm - Ø 90mm
(14 - 15)

Where to use it



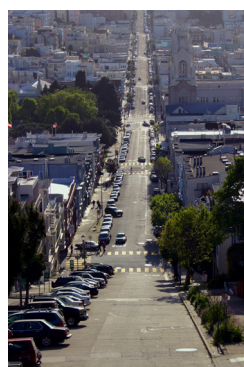
Industrial and Commercial Areas

Building site
Petrochemical and steel mill, heavy industries in general
Food Industry
Chemical Industry
Industrial processing zones
Mall and supermarkets
Banks, Pubs ,Car parks
Transit areas, Shipyard, Pit



Transports and Logistics

Airports
Train stations
Tube stations
Bus stations
Ports
Warehouses
Logistics terminals



Road Safety

Winding roads
Seaside cities and villages
Blind corners
Secondary roads
Parking
Intersections and junctions
Roads with access to car parks, factories and commercial areas



Public and Private Institutions

Schools
Hospitals
Swimming pool
Prisons
Public offices
Police and fire station
Military bases

Distance in meters (m)		30 m	30 - 40 m	40 - 50 m	50 - 60 m
Width of the Road (m)					
1 lane road	4 - 5 m	Ø 600 mm □ 450x600 mm R: 1500 mm	Ø 600mm □ 450x600mm R: 2200mm	Ø 800 mm □ 600x800 mm R: 3000 mm	Ø 800 mm □ 600x800 mm R: 3000 mm
	6 m	Ø 800 mm □ 600x800 mm R: 2200 mm	Ø 800 mm □ 600x800 mm R: 2200 mm	Ø 1000 mm R: 3000 mm	Ø 1000 mm R: 3000 mm
2 lane road	7 m	Ø 1000 mm R: 2200 mm	Ø 600 mm R: 2200 mm	Ø 1000 mm R: 3000 mm	Ø 1000 mm R: 3000 mm

Ø: Round mirror size (mm)
□: Rectangular mirror size (mm)
R: Radius (mm)

If the distance is more than 60 meters, Ø 1000 mm, radius 3600 mm is the best solution

Quality Tests Performed

Resistance to Wind Load:
Sample mounted horizontally with pole brackets. Torque moment of the fixing screws: 110 Nm. Sample loaded with 60 Kg for 5 min. Results: No variations of the position of the sample. No cracks.

Coefficient of Reflection:
Coefficient of reflection measured through integrating sphere: 64,2%

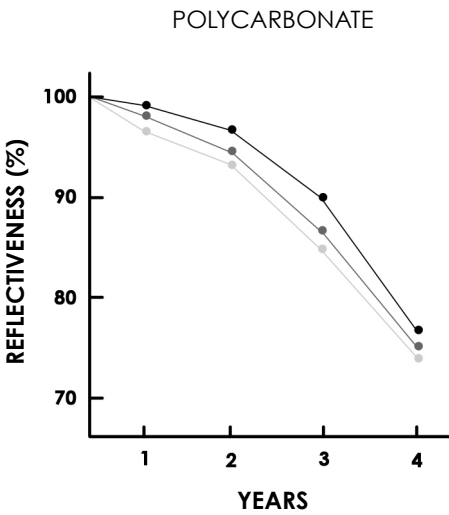
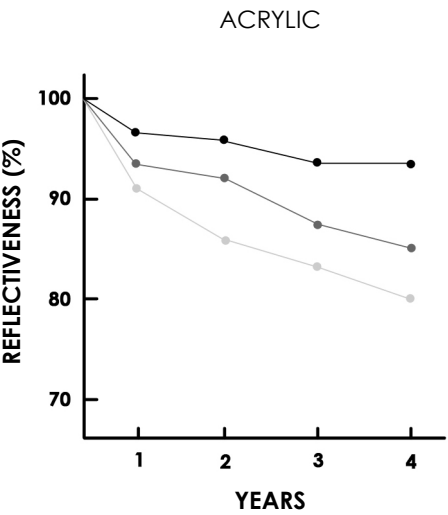
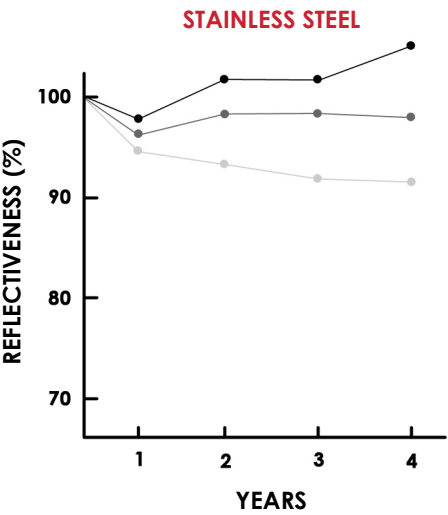
Fields of Vision:
Field of vision measured with the observation axis that passes perpendicular through the center of the sample at a distance of 4 meters: 60°.

Source: TUV Rheinland Italia srl – Product Report

Comparative Tests* between different Convex Mirrors Materials

(Exposition of Mirrors for 4 years in different environments)

- City
- Mountain
- Seaside



* Test Results are to be intended just as reference

Source: Japanese's "National Road Sign & Display Association"

Outdoor Stainless Steel Convex Mirrors

	Mirror Size (mm)	Packaging Sizes (mm)	Gross Weight (kg) Approx	Mirrors per Box (pcs)	Capacity (pcs)	
					1 Pallet	20' CTN
(1)	320	370 x 362 x 77	1,5	1	160	1600
(2)	490	546 x 544 x 63	3,5	1	72	720
(3)	600	725 x 725 x 125	11	1	22	220
(4)	800	900 x 900 x 125	15	1	18	180
(5)	1000	1100 x 1100 x 125	21	1	10	100
(6)	450 x 600	690 x 625 x 133	9	1	25	250
(7)	600 x 800	885 x 785 x 133	13	1	19	190



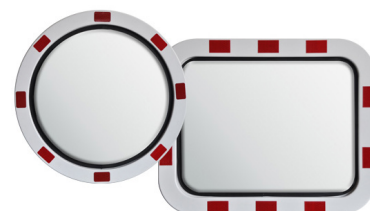
Indoor Stainless Steel Convex Mirrors

	Mirror Size (mm)	Packaging Sizes (mm)	Gross Weight (kg) Approx	Mirrors per Box (pcs)	Capacity (pcs)	
					1 Pallet	20' CTN
(8)	490	525 x 525 x 110	2,5	1	60	600
(9)	600	675 x 675 x 115	3,8	1	31	310



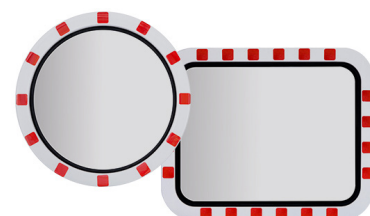
ABS Stainless Steel Convex Mirrors

	Mirror Size (mm)	Packaging Sizes (mm)	Gross Weight (kg) Approx	Mirrors per Box (pcs)	Capacity (pcs)	
					1 Pallet	20' CTN
(10)	600	827 x 811 x 113	13	1	20	200
(11)	800	1048 x 1032 x 113	17	1	15	150
(12)	450 x 600	834 x 773 x 113	11	1	24	240
(13)	600 x 800	1023 x 817 x 113	15	1	18	180



Anti-Freeze Stainless Steel Convex Mirrors

	Mirror Size (mm)	Packaging Sizes (mm)	Gross Weight (kg) Approx	Mirrors per Box (pcs)	Capacity (pcs)	
					1 Pallet	20' CTN
(14)	600	800 x 810 x 220	18	1	12	120
(15)	600 x 800	1000 x 810 x 220	20	1	10	100



Deliveries all around Europe within 10 working days for all the Mirrors in stock

Stainless Steel Convex Mirrors Complete Range



(1) **320mm**
12,60 inches



(2) **490mm**
19,30 inches



(3) **600mm**
23,62 inches



(4) **800mm**
31,49 inches



(5) **1000mm**
39,37 inches



(6) **450x600mm**
17,72x23,62 inches



(7) **600x800mm**
23,62x31,50 inches



(8) **490mm**
19,30 inches



(9) **600mm**
23,62 inches



(10) **600mm**
23,62 inches



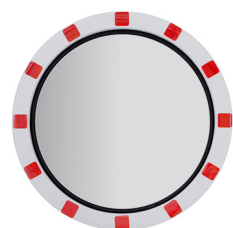
(11) **800mm**
31,49 inches



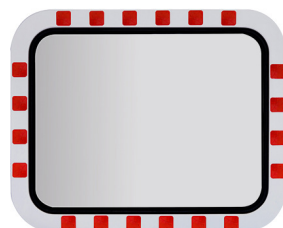
(12) **450x600mm**
17,72x23,62 inches



(13) **600x800mm**
23,62x31,50 inches



(14) **600mm**
23,62 inches



(15) **600x800mm**
23,62x31,50 inches

Note

[illegible]



Steel Crafts Europa s.r.l.

Società a Socio Unico soggetta a direzione e coordinamento di Ni Hsin Resources Bhd

SEDE OPERATIVA

C.C. Borgo Santa Chiara - Via Nazionale Nr. 61
25080 Raffa di Puegnago del Garda (BS) ITALY

SEDE LEGALE

Zona Industriale - Via Stretta Nr. 63
25070 Sabbio Chiese (BS) ITALY

E-mail: info@steelcrafts.it

Tel. +39.030.7640079

Fax. +39.0365.020001

www.convexmirrors.info

www.steelcrafts.it





Steel Crafts Europa s.r.l.

Società a Socio Unico soggetta a direzione e coordinamento di Ni Hsin Resources Bhd

SEDE OPERATIVA

C.C. Borgo Santa Chiara - Via Nazionale Nr. 61
25080 Raffa di Puegnago del Garda (BS) ITALY

SEDE LEGALE

Zona Industriale - Via Stretta Nr. 63
25070 Sabbio Chiese (BS) ITALY

E-mail: info@steelcrafts.it

Tel. +39.030.7640079

Fax. +39.0365.020001

www.convexmirror.guru

www.convexmirrors.info

www.steelcrafts.it

