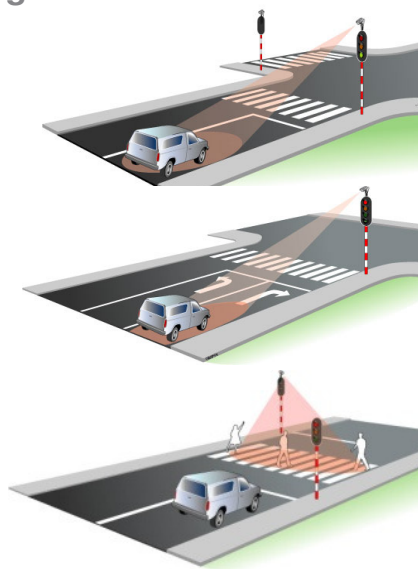


📡 The **Intersection** product range includes 3 Doppler sensors designed for vehicles or pedestrian detection. They allow, among other, to call or extend the colour phases of the traffic lights.

- **TM60** : detection up to 100 m and wide lobe

- **TM150** : detection up to 150 m OR narrow lobe at short distance

- **TMP** : pedestrian detection for extension of green phase



## The assets

- Shock-resistant
- Settings without radar opening
- Ready to install (cable, mounting support, screws and bolts)
- Operation under all weather conditions
- Above ground technology

## 📡 Why a radar?

### ABOVE GROUND TECHNOLOGY

- Safer for the traffic engineers, who can stay on the roadside for installation
- Less expensive: no roadworks nor traffic interruption needed for the installation

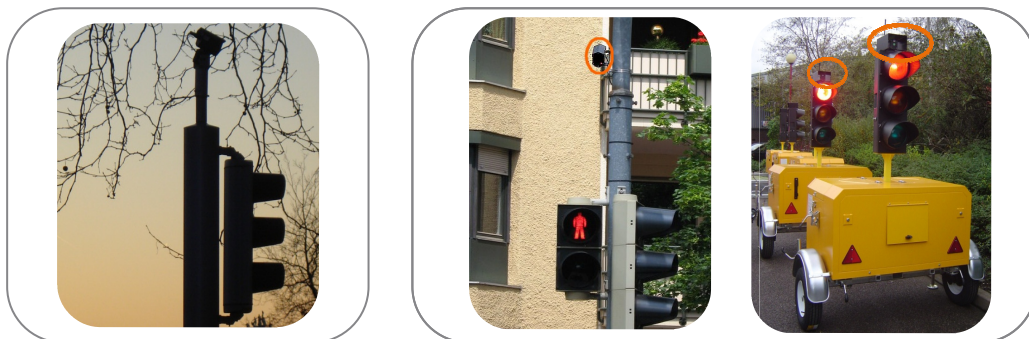
### IT OPERATES UNDER ALL WEATHER CONDITIONS

Frost, snow, fog, etc. have no influence on the radar performance.

### NO MAINTENANCE

No lens to clean, no calibration





## Why a radar ICOMS?

### Easy to install:

- Detachable cable at the rear
- Delivered ready to install, i.e. including cable, fixing support, screws and bolts
- Settings adjustable without radar opening
- Extended operating temperature: -40 °C/+75 °C

### Wide application possibilities:

- intersections
- warnings (VMS' activation)
- wrong-way detection...

## Options

### LP version

low power consumption for solar power, with open collector output

### Special housing for portable traffic light

## STANDARDS



Electromagnetic compatibility and electrical safety: the TM60, TM150 and TMP comply with the essential requirements and other relevant provisions of the R/TTE Directive 1999/5/EG.

## TECHNICAL FEATURES

	TM60	TM150	TMP
Detection range (for a personal car, installation height : 4.5 m, tilt angle : 5°, sensitivity set on ¾)	80 m	150 m	30 m
Minimum detected speed	Adjustable from 1 to 16 km/h		0.5 km/h
Detection direction	Approaching, receding or bidirectional		
Speed range	From chosen threshold up to 160 km/h		
Dimensions	70x100x120 mm		
Dimensions 220 V power supply	70x100x210 mm	70x100x248 mm	70x100x210 mm
Weight (without cable & mounting support)	0.9 kg	1.2 kg	0.9 kg
Environmental protection	IP65, EN 50102 (IK)		
Mounting system	Double-L (supplied), adapted for M8		
Operating temperature	From -40 °C to +75 °C		
Power supply	LV version: 10-42 VAC/10-60 VDC - EU version: 220 VAC LP version: 6-20 VDC		
Consumption	< 1 W (90 mA under 12 VDC)		
Frequency	K-band - 24.125 Ghz		
Transmit power	5 mW		
User output	Visible LED on front face – Inverted relay contact		
Reaction time	< 250 ms		< 500 ms
Hold time of the relay	1 sec. (LP : 1.2 sec.)		2 sec. (LP : 1.4 sec.)

Specifications subject to change without prior notice.