

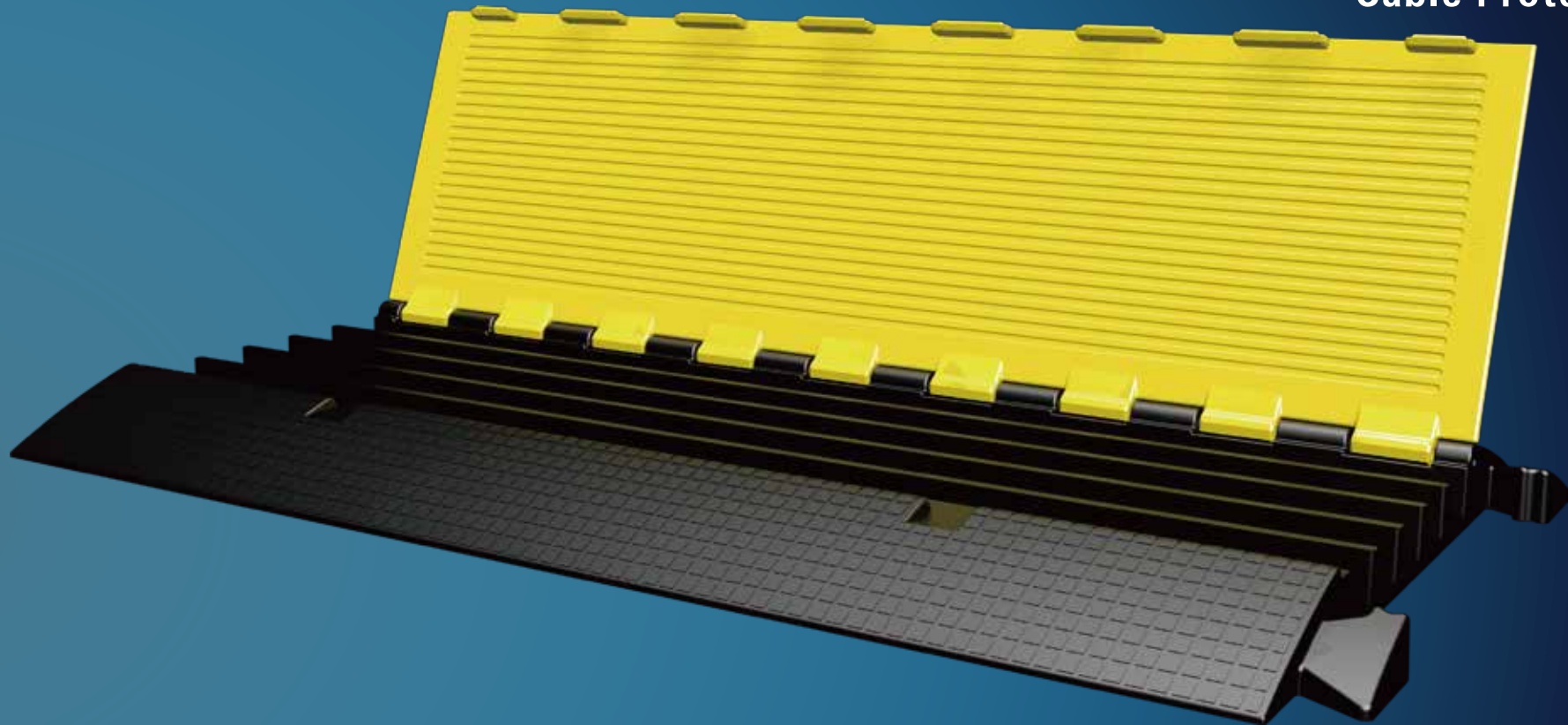


**Cables Protector**  
[www.cablesprotector.com](http://www.cablesprotector.com)

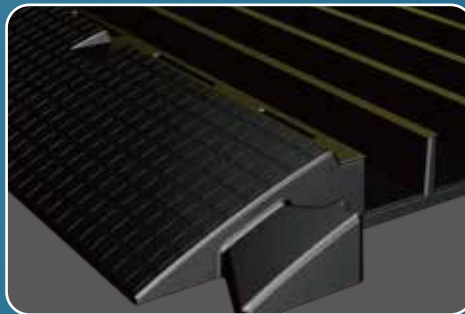
**BestSea**

# BestSea

## Cable Protector



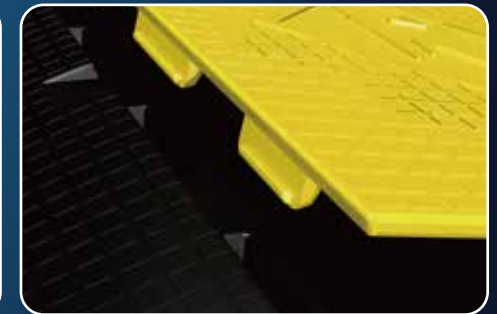
Made Of TPU Materials Instead of Rubber, and Strength is 10times than Rubber..



Triangle Connector For Most Durable Locking!



Square Dot Pattern



Thanks to Locking Pins , the Yellow Lid would not wrinkle up when heavy Truck pass by it.



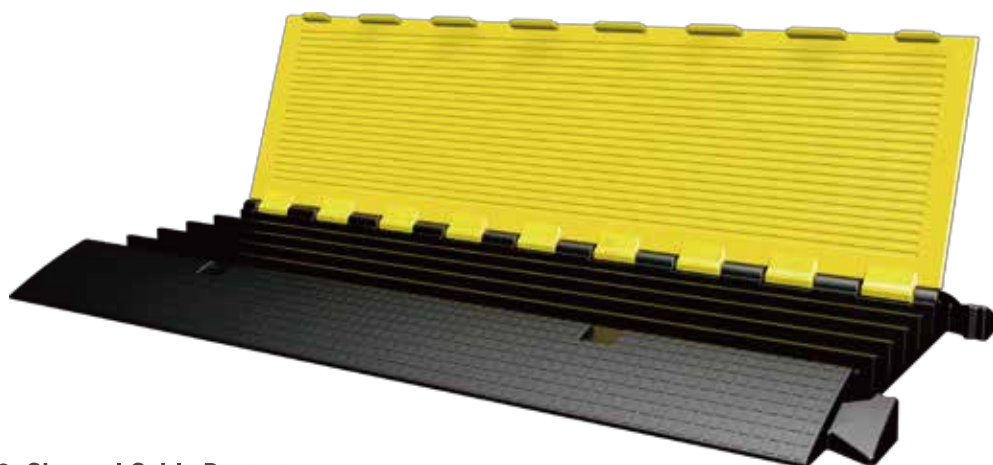
If there are running cords, cables and wires across any surface where foot or vehicle traffic is going to occur, cord protector is an essential investment. We stock cable and cord protectors for virtually every application, from home and office to warehouses and construction sites. Whether indoor, outdoor, jobsite, worksite, conference room, office and so on. In fact, we need it absolutely.

### Features of cable protector

- These PU protectors are extremely durable, easy to install, and protect cords and cables.
- Multiple sizes for various cable diameters
- Reduce tripping hazards.

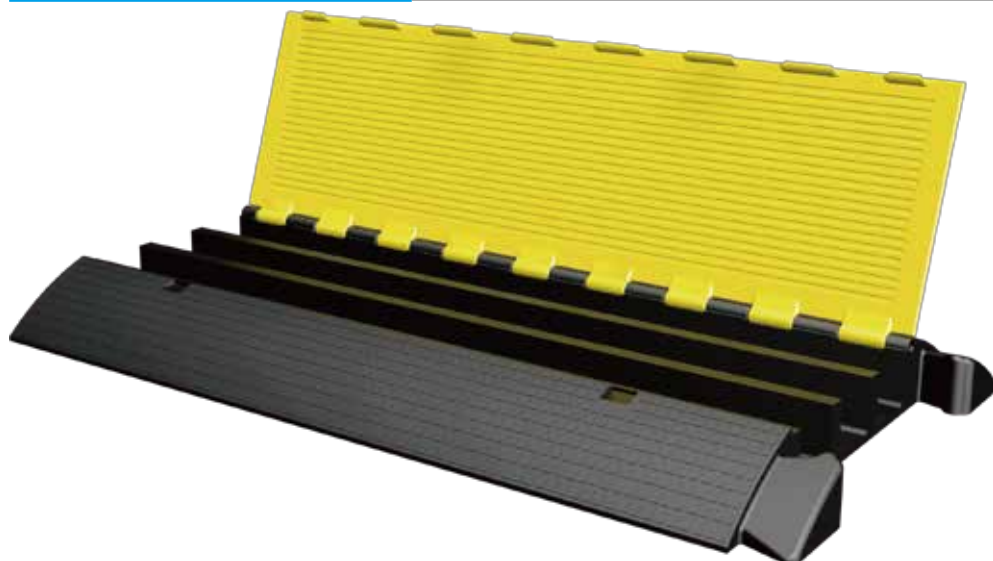
- Diamond plate slip resistant surface for excellent traction.
- Low angle ramps provide easy access for carts and pedestrians.

### 5-Channel Cable Protector



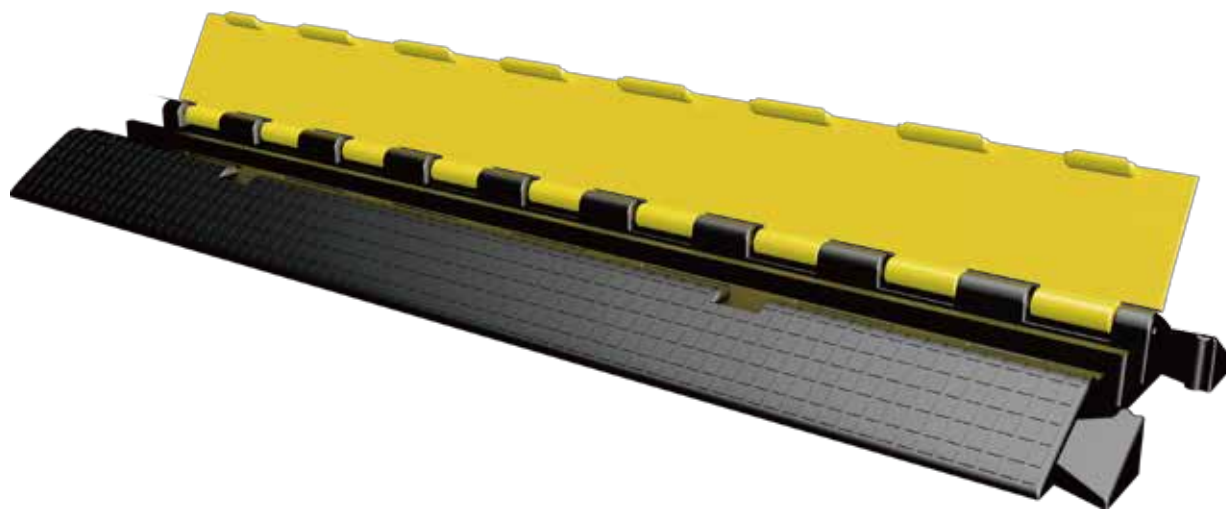
<b>Model no</b>	BS-NCP-2M
<b>Length</b>	900mm
<b>Width</b>	500mm
<b>Height</b>	55mm
<b>Channel QTY</b>	5
<b>Channel Width</b>	42mm
<b>Channel Height</b>	42mm
<b>Weight</b>	8kg
<b>Loading Capacity</b>	30Tons
<b>Color</b>	Yellow/Black

### 3-Channel Cable Protector



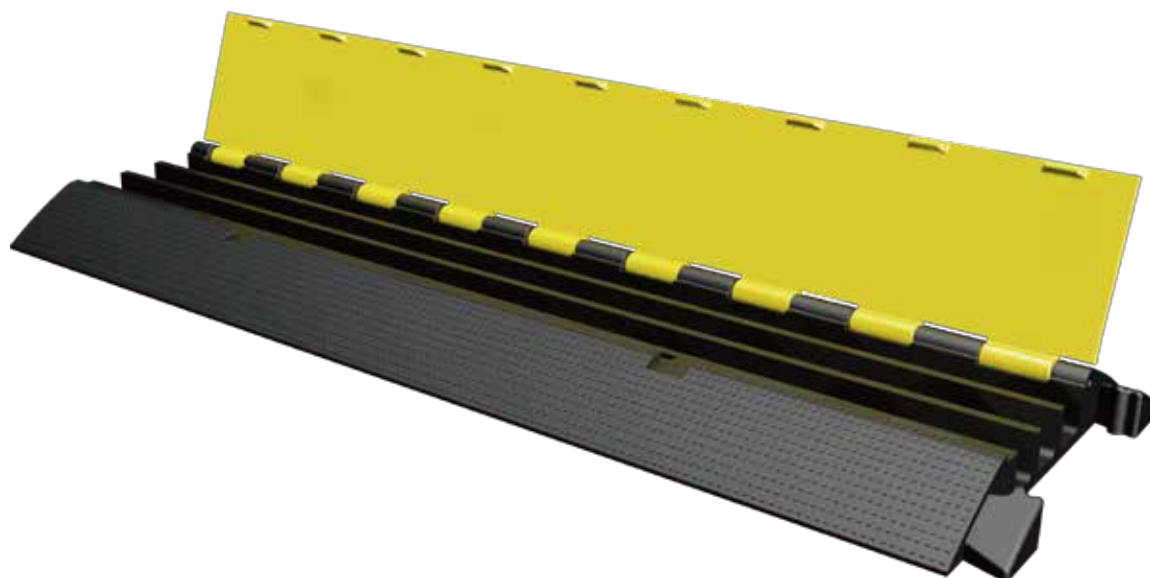
<b>Model no</b>	BS-NCP-4M
<b>Length</b>	900mm
<b>Width</b>	500mm
<b>Height</b>	75mm
<b>Channel QTY</b>	3
<b>Channel Width</b>	65mm
<b>Channel Height</b>	65mm
<b>Weight</b>	11kg
<b>Loading Capacity</b>	30Tons
<b>Color</b>	Yellow/Black

### Small 2-Channel Cable Protector



<b>Model no</b>	BS-NCP-5M
<b>Length</b>	900mm
<b>Width</b>	250mm
<b>Height</b>	45mm
<b>Channel QTY</b>	2
<b>Channel Width</b>	32mm
<b>Channel Height</b>	32mm
<b>Weight</b>	5kg
<b>Loading Capacity</b>	30Tons
<b>Color</b>	Yellow/Black

### Small 3-Channel Cable Protector



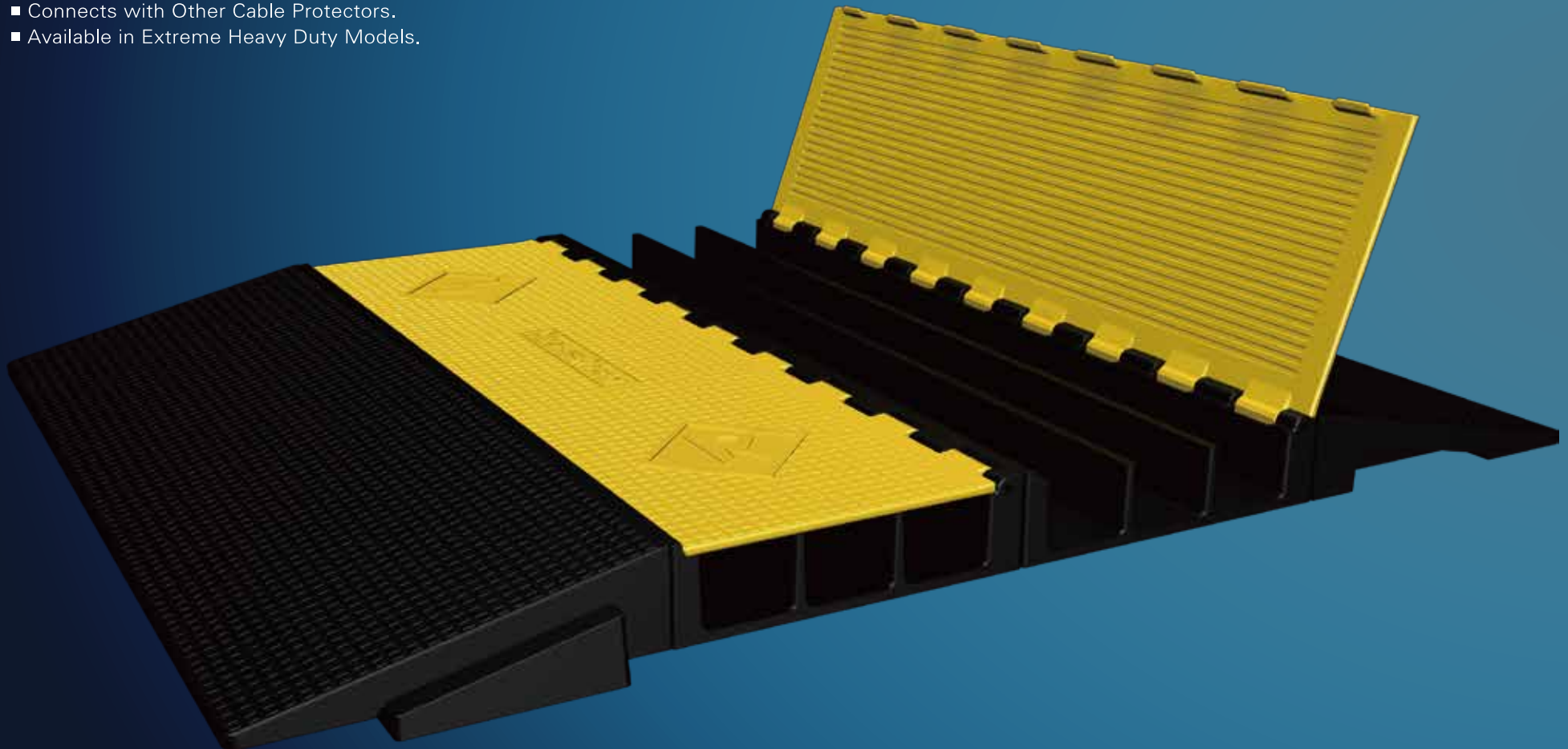
<b>Model no</b>	BS-NCP-9M
<b>Length</b>	900mm
<b>Width</b>	250mm
<b>Height</b>	45mm
<b>Channel QTY</b>	3
<b>Channel Width</b>	35mm
<b>Channel Height</b>	35mm
<b>Weight</b>	4kg
<b>Loading Capacity</b>	30Tons
<b>Color</b>	Yellow/Black

## AMS Systems

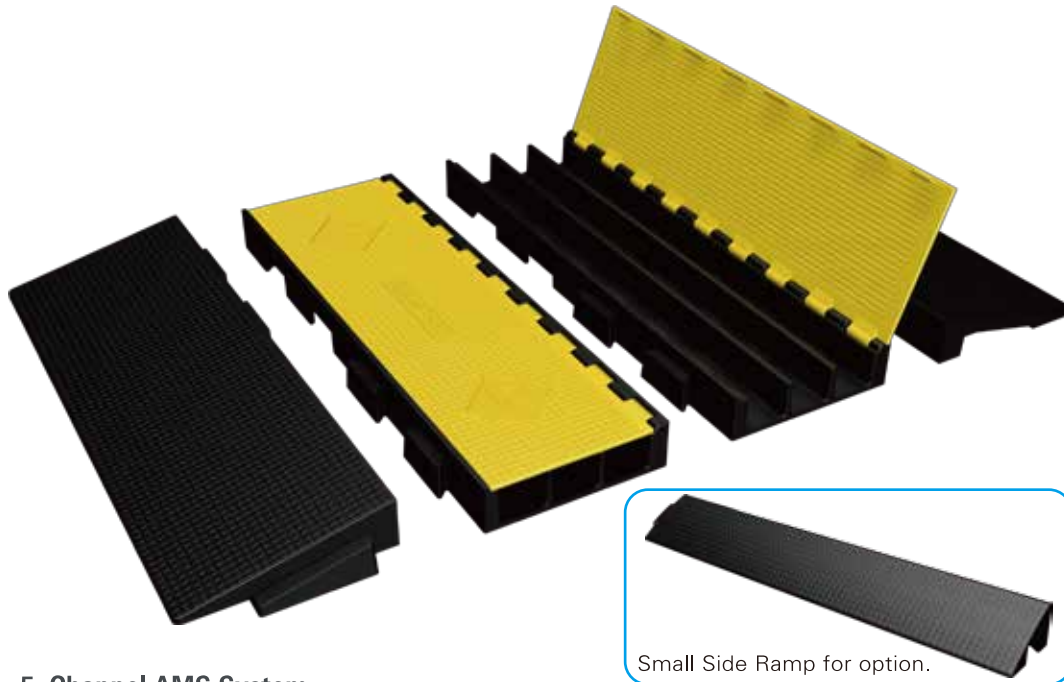
The AMS(Advanced Modular System) is the first cable protector system designed to grow with a user's needs. "system" includes 1 AMS center section and 1 pair of ramps, it can connect unlimited center sections and add ramps. Now a user can "build" a cable protector system on-site to accommodate an unlimited number of cables, add ADA compatible ramps and tailor it for restricted floor space. The AMS extra heavy duty cable protector system will handle a wide range of traffic from pedestrians to trucks and buses.

### Features

- Holds Unlimited Number of Cables.
- Space Efficient, Easy to Assemble. All ramps can be detached when not in use, requiring less space in transit and in storage.
- Forms Fully Flat, Highly Stable Surface. No gaps or valleys between parallel cable connectors.
- Expandable ADA Compatible Ramps.
- Connects with Other Cable Protectors.
- Available in Extreme Heavy Duty Models.

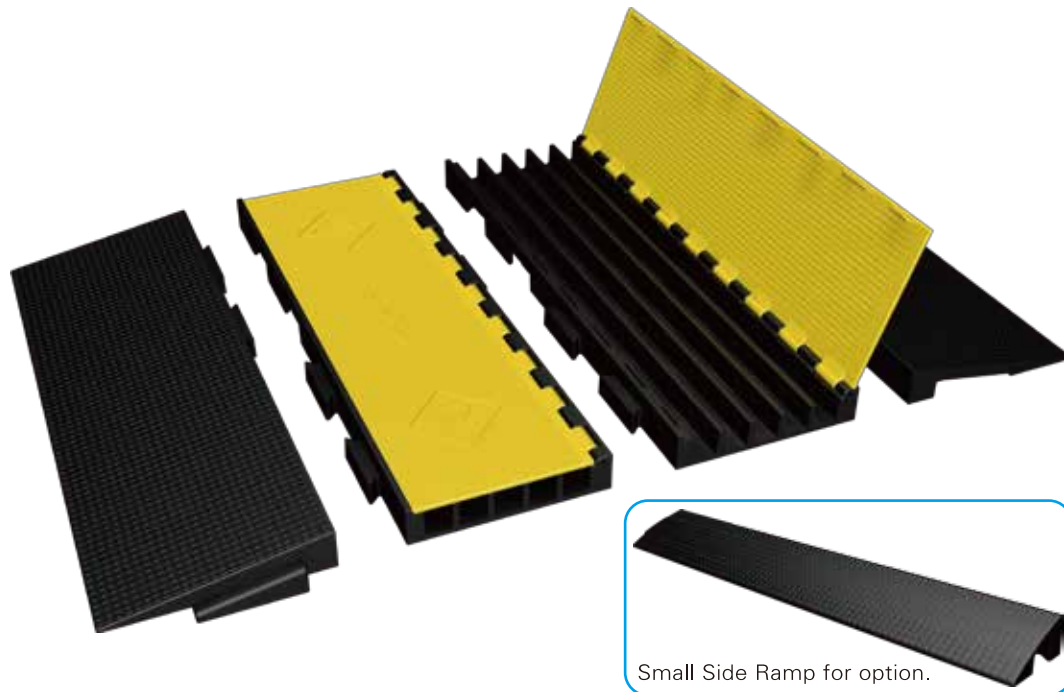


### 3-Channel AMS System



Model no	BS-AMS-4M	BS-AMS-4E
Part	Middle	Side Ramp
Length	900mm	900mm
Width	300mm	300mm
Height	75mm	75mm
Channel QTY	3	
Channel Width	65mm	
Channel Height	65mm	
Weight	11kg	9kg
Loading Capacity	30Tons	30Tons
Color	Yellow/Black	Black

### 5-Channel AMS System



Model no	BS-AMS-2M	BS-AMS-2E
Part	Middle	Side Ramp
Length	900mm	900mm
Width	300mm	300mm
Height	50mm	50mm
Channel QTY	5	
Channel Width	42mm	
Channel Height	42mm	
Weight	10kg	7kg
Loading Capacity	30Tons	30Tons
Color	Yellow/Black	Black



# BestSea

## Collapsible Cable Cover



Collapsible For Saving Space and Easily Carry



Reflective Glass Beads for better visibility at Night.

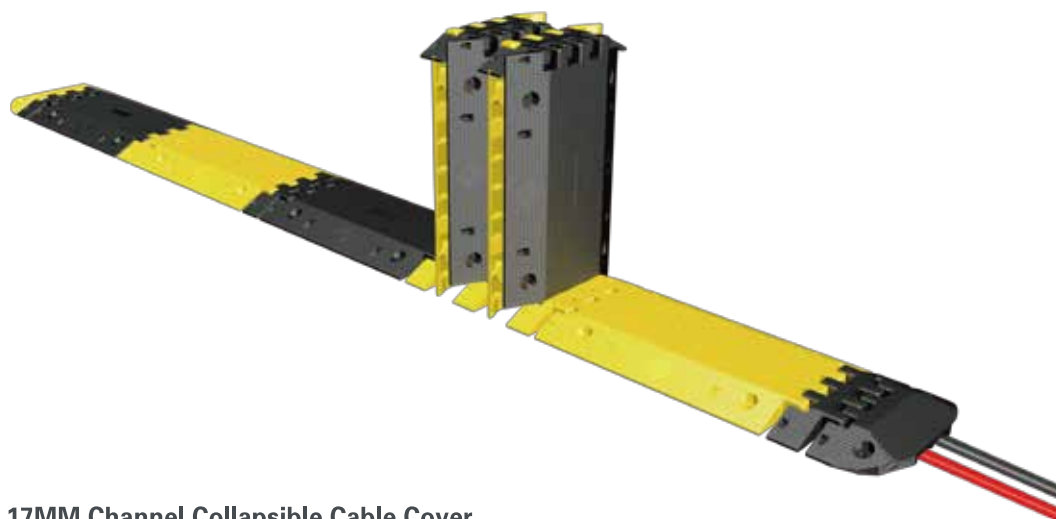


Collapsible Cable Cover are a quick and easy solution of cable management. The durable polyurethane is ideal for heavy traffic. The Collapsible system to save a lot store space and could be expanded to 3M Length easily. These drop over cable covers are a fast and effective way of protecting small cables and cords in shop, Warehouse and Road...

### Features

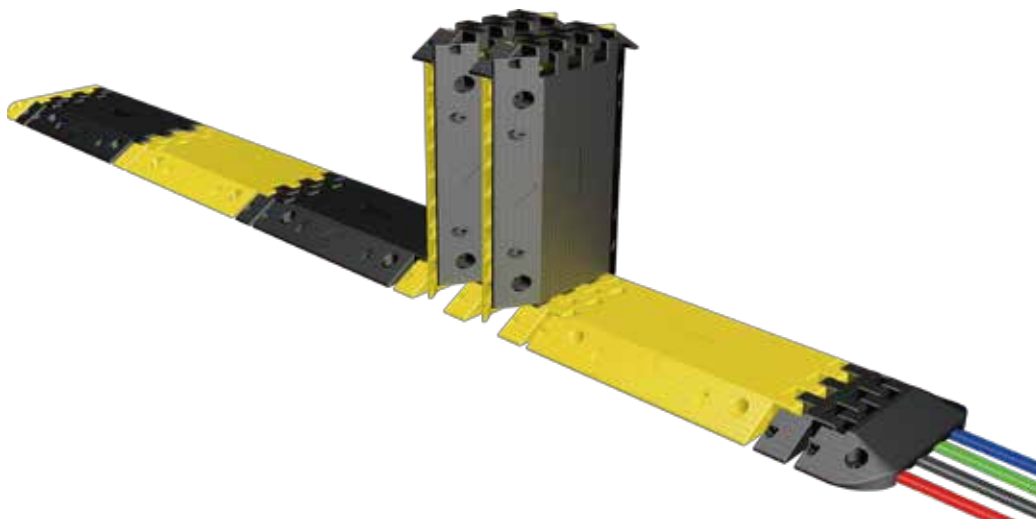
- Folded to be 250MM Height only.
- Easy to setup and break down for storage.
- Molded safety warnings.
- High traction surface tread.
- Expanded to 3 Meter.

#### 10MM Channel Collapsible Cable Cover



<b>Model no</b>	BS-NCCR-1
<b>Expand Length</b>	3M
<b>Width</b>	300mm
<b>Height</b>	40mm
<b>Channel</b>	38x10mm x 2
<b>Collapsible Size</b>	500x320x300mm
<b>Weight</b>	18kg
<b>Weight Capacity</b>	20Tons
<b>Color</b>	Yellow/Black

#### 17MM Channel Collapsible Cable Cover

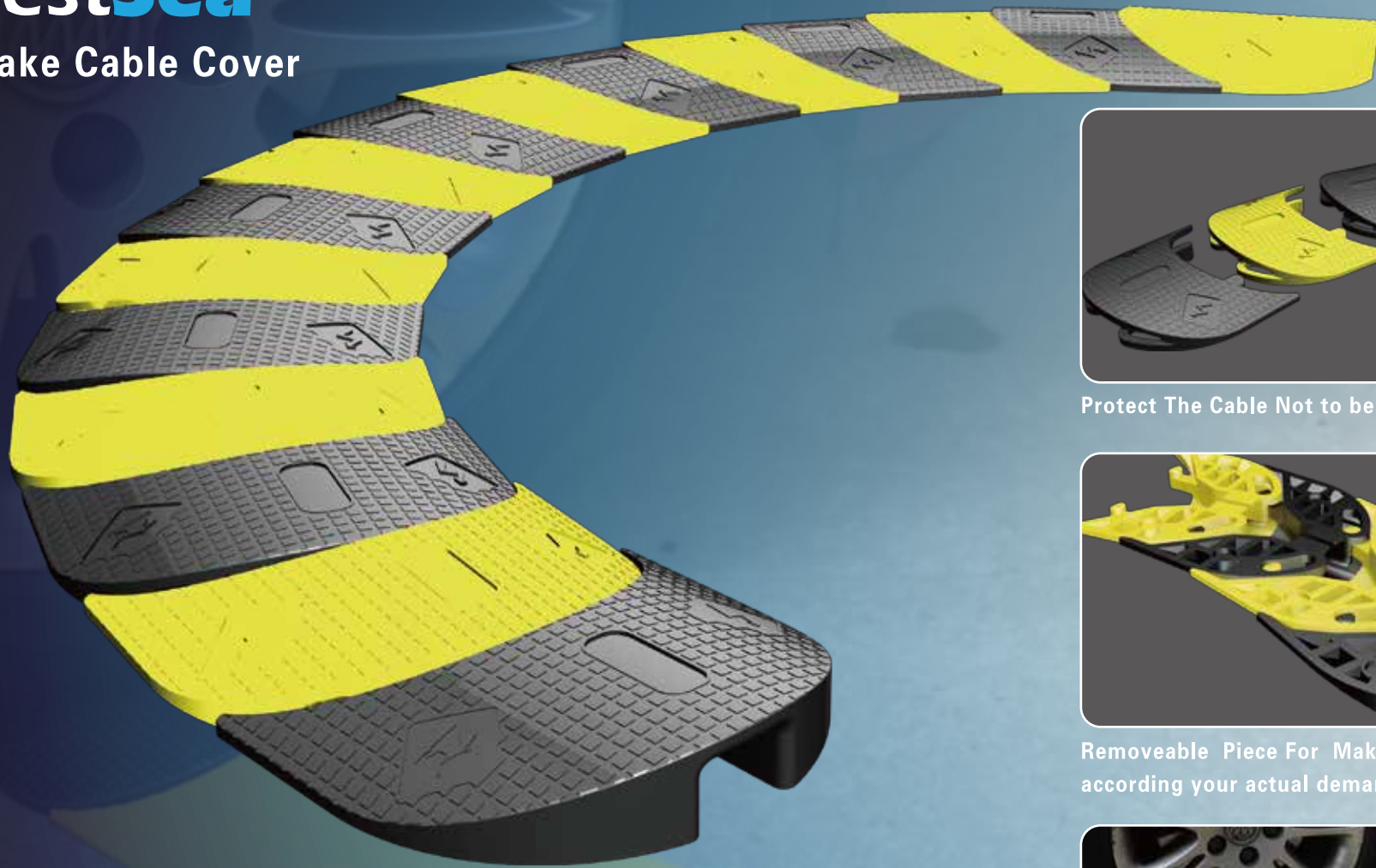


<b>Model no</b>	BS-NCCR-2
<b>Expand Length</b>	3M
<b>Width</b>	400mm
<b>Height</b>	50mm
<b>Channel</b>	50x17mm x4
<b>Collapsible Size</b>	500x400x400mm
<b>Weight</b>	22kg
<b>Weight Capacity</b>	20Tons
<b>Color</b>	Yellow/Black



# BestSea

## Snake Cable Cover



Protect The Cable Not to be Fallen Off



Removeable Piece For Make the Length according your actual demands.



Designed For Any Location of Cables

The Snake Cable Protector is an innovative new solution for protecting cables run across the floor. The new design articulates left and right, allowing the system to turn corners and adapt to the layout of the room, while maintaining full protection for the cables and trip protection for pedestrians. Cables can be left in the system for the ultimate in portability, or left in place indefinitely. There is no longer a compromise between safety and flexibility.

#### Features

- Articulating pieces offer flexible design for curves and corners.
- Easy to accommodate any desired length, simply snap in more links.
- No special tools required.
- Fully customizable length.
- Reduces trip hazards.

#### 10MM Channel Collapsible Cable Cover



<b>Model no</b>	BS-NCCR-1
<b>Total Length</b>	3 Meter
<b>Unit Quality</b>	36PCS
<b>Unit Length</b>	110mm
<b>Width</b>	80mm
<b>Height</b>	15mm
<b>Channel Width</b>	16mm
<b>Channel Height</b>	10mm
<b>Adjustable Angle</b>	20 Degree
<b>Weight</b>	2.0kg
<b>Loading Capacity</b>	200kg
<b>Color</b>	Yellow/Black

#### 20MM Channel Collapsible Cable Cover



<b>Model no</b>	BS-NCCR-1
<b>Total Length</b>	3 Meter
<b>Unit Quality</b>	36PCS
<b>Unit Length</b>	110mm
<b>Width</b>	80mm
<b>Height</b>	15mm
<b>Channel Width</b>	16mm
<b>Channel Height</b>	10mm
<b>Adjustable Angle</b>	20 Degree
<b>Weight</b>	2.0kg
<b>Loading Capacity</b>	200kg
<b>Color</b>	Yellow/Black