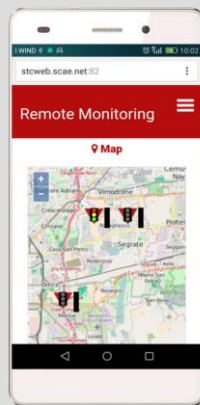
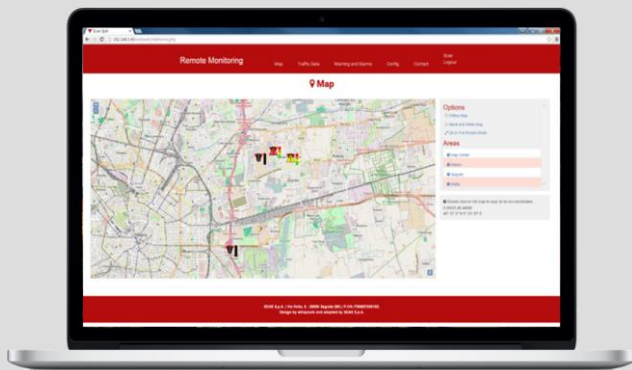




COMPANY WITH  
QUALITY SYSTEM  
CERTIFIED BY DNV GL  
= ISO 9001 =

# SMT\_Web

REMOTE TRAFFIC MONITORING SYSTEM

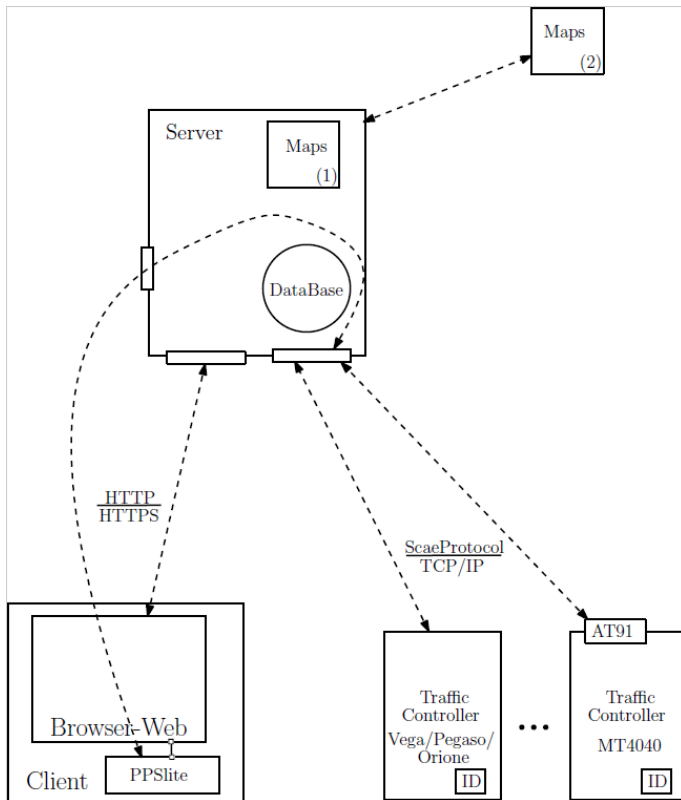


## APPLICATIONS

SMTWEB offers an easy and user-friendly access to Traffic Controller Networks:

- Access everything with just a web-browser (smartphone, tablet, pc, ...)
- The interactive map makes it easy to move around and quickly find what you are looking for (if you have a wide network you can create Areas that are shortcuts to specific locations in your map).
- Stay always up to date on your Traffic Controllers Network. The system automatically updates you with an SMS and/or e-mail if a new alarm or warning occurs.
- Traffic data are automatically collected and stored into a database
- Collect log file from the junction
- Remote programming of Traffic Controllers (upload and download of traffic controller configurations)
- A full-fledged copy of the Traffic Controller Panel
- Traffic Controller time and date synchronization

## SYSTEM ARCHITECTURE



Both Traffic Controllers and Clients must connect to the Server. Therefore, they must be connected to the same subnetwork or have Internet access.

## SYSTEM FEATURES

The SMTWEB requires Windows Server 2008 / Windows 7 or higher.

An SMTWEB Client is any device (computer, smartphone, tablet, ..) which has at least one web-browser installed (it will work properly on any OS: Android, Windows, iOS, Mac OS, ...).

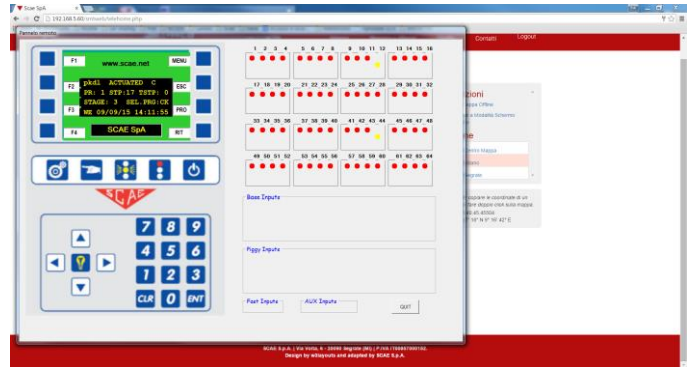
Remote programming of Traffic Controllers requires Windows-based clients.

The human-machine interface is entirely web-based and provides the following features:

- Zoom, drag and click on the map to explore your traffic controller network.
- Click on a Traffic controller icon to open up a popup, which contains real-time Traffic Controller data.
- Each Traffic Controller icon has a button for creating a direct connection between the Traffic Controller and the Configuration Software.
- Traffic data visualization.
- User-friendly configuration panel.
- Multi-language support.

The Configuration Panel allows users to:

- Add/remove Traffic Controllers on the map
- Add/remove users and configure privileges
- Turn on/off traffic data collection
- Add/remove phone numbers and e-mail addresses
- Configure map Areas.



## SYSTEM FUNCTIONS

The main system functionalities are:

- Remote monitoring of all your traffic controller network
- Remote Traffic Controllers configuration.
- Receive alarm and warning notifications through SMS and/or e-mail.
- Create traffic data plots by traffic controller, sensor and time interval.
- log files download.
- BlackBox files download.
- Send commands through the remote panel

