



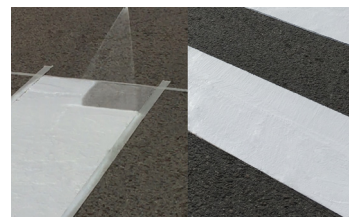
2100 - ECOPICRIL

Waterborne road marking paint, formulated with acrylic polymers. Environmentally friendly. Can be applied on all kinds of bituminous pavement, concrete or slurry. Glass beads must be added on surface for night visibility. Available in white and yellow.



2115 - HIDRONIK

Waterborne road marking paint formulated with acrylic polymers. Specially recommended for urban application due to its whiteness and traffic resistance. Environmentally friendly. Can be applied on all kinds of bituminous pavement, concrete or slurry. Available in white.



3105 - SEÑACRIL

Styrenated acrylic solvent-based paint, for road marking. Automatic application. Indispensable application together with glass beads, dropped on surface, conferring retroreflection for night visibility. Fast drying. Available in white and colours.



3115 - CITYCRIL

Acrylic paint of supreme quality, specially recommended for urban applications with roller. Very good results also for automatic application and road too. Glass beads must be added on surface of white and yellow colours for night visibility. Fast drying. Available in white and colours.



3129 - CITYCRIL D

Multipurpose pure acrylic solvent-based paint, for both urban and road applications. Glass beads must be added on surface for night visibility. Automatic application. White colour.



5115 - DOSCRIL

Two-component cold plastic road marking paint, with high anti-skid properties. It hardens by chemical reaction. For pedestrian crossings and symbols in general. Hand/trowel application. Available in white and colours.



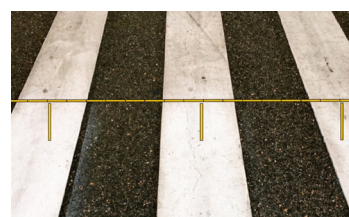
6001A / 6100B - TWINCRIL

Three-component cold plastic road marking product, which hardens by chemical reaction. Automatic application with appropriate machine. Glass beads must be added on surface for night visibility. Available in white and colours.



TW60 - STAY CLEAN VARNISH

Road marking varnish protector. Designed to keep pedestrian crossings and symbols in the best whiteness conditions. It favours road marking cleaning by mechanic processes or with rainwater. It dries by chemical reaction when applied as a thin layer over wet Doscril or Twincril surface. Application by pulverization.





CB50 - SLUCRYL

Acrylic solvent-based coating, specially engineered for bike lanes and footpaths, with anti-skid properties. Easy manual application with trowel or rubber scraper. Excellent outside and UV resistance. Available in oxide red, fronton green, grey, sand and black colours.



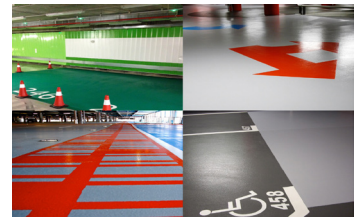
IU59 - POLYURETHANE ENAMEL, THICK LAYER

Polyurethane two-component enamel, rate 10:1, leaves high quality thick layers. Excellent outdoor resistance and good colour retention. Very versatile product: it can be applied in sandwich system together with aggregates to obtain anti-skid surfaces with high mechanical resistance. Available in colours.



IE40 - EPOXY FOR AUTOMATIC APPLICATION

Satin two-component epoxy paint, rate 5:1. High mechanic and abrasion resistance. Great hardness and good adherence over concrete indoors and in white colour outdoors. Also over steel, sheet metal, etc. Available in colours.



5115T - DOSCRIL TEXTURE

Two-component cold plastic road marking paint, with a special thixotropy, intended to create textured road markings: structured and profiled. It hardens by chemical reaction. Automatic application with appropriate machine. Available in white.



BN15 - RESIN FOR AGGREGATES

This product is applied together with aggregates, resulting in a cold applied system, suitable for heavy trafficked areas, as it confers anti-skid properties. High friction, hard-wearing pigmented surface treatment, available in neutral colour.



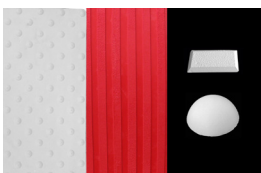
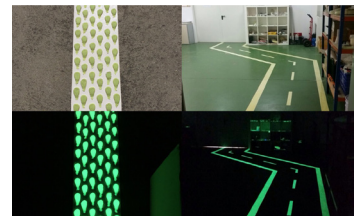
NA60140 - CAPTAGUM

Two-component cold plastic adhesive for road studs. It hardens by chemical reaction. The two components must be mixed prior application: 2,5 kg container + 40 gr catalyst bag. It is supplied in boxes of 10 containers. Asphalt grey colour.



PHOTOLUMINESCENT PRODUCTS

Wide photoluminescent product range for road and interior surfaces marking: solvent based paints, two-component polyurethane and preformed products. It accumulates energy from artificial and sun light and then provides visibility under total darkness conditions.



PREFORMED PRODUCTS

Range of products developed to ensure and increase safety features of road markings: tactile pads for disabled people, slowdown studs and plots and other safety and accessibility preformed.

