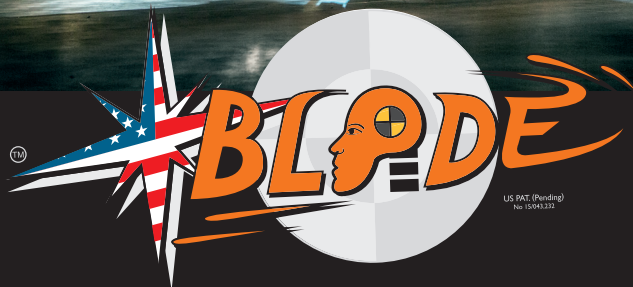


**NOW AVAILABLE!**



US PAT. (Pending)  
No. 15/049,332

**THE No1 MASH**  
**TRUCK MOUNTED ATTENUATOR**

**WWW.BLADE-TMA.COM**



## THIS IS BLADE

The No1 MASH TMA; Finally a new leader is born. BLADE, the long awaited new Truck Mounted Attenuator. Full scale crash tested according the Manual for Assessing Safety Hardware (MASH) that supersedes the 20 year old NCHRP-350.

## WHY MASH?

The safety changes are mainly necessitated by alterations made to vehicles over the past decade. Cars have greatly increased in size, so different safety regulations are required to keep the occupants safe. The average bumper height on light trucks has risen considerably since 1993, so previous

highway safety designs are no longer adequate.

## WHAT'S THE DIFFERENCE FOR TMA'S

The new MASH 2016 standard sets stricter criteria for Truck Mounted Attenuator's, bigger, heavier and newer test Vehicles has to be used during testing, also the shadow vehicle criteria are stricter and much heavier, upper and lower truck weight has to be tested, ballast has to be fixed and also the arrow board together with the TMA construction must have been tested.

The optional offset- and offset angle tests are now required in MASH!

## GET YOUR GOODIES!

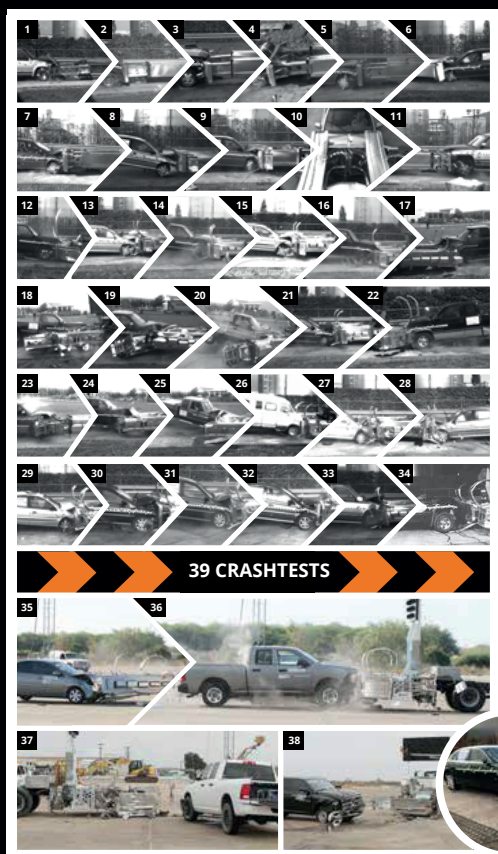
Buy a BLADE TMA  
**and get free goodies!**

Upload your BLADE TMA TRUCK picture to our Wall of Fame Gallery and choose your goodies!



# WHY BLADE AND HOW IT WORKS

Let`s explain how this patented invention works. The TMA strength comes out of the composite aluminum welded profiles, this machine has 12 internal blades. During an impact the first 4 blades cut through the aluminum composite H-beams and after unlocking 8 blades cut through the welded tubes. The remaining weak aluminum parts will bend away in safe directions. The patent is based on cutting aluminum H beams and tubes using BLADES.

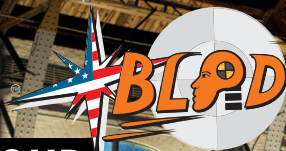


## THIS TMA HAS THE HIGHEST SAFETY LEVEL

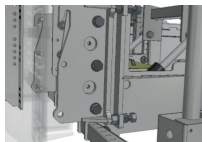
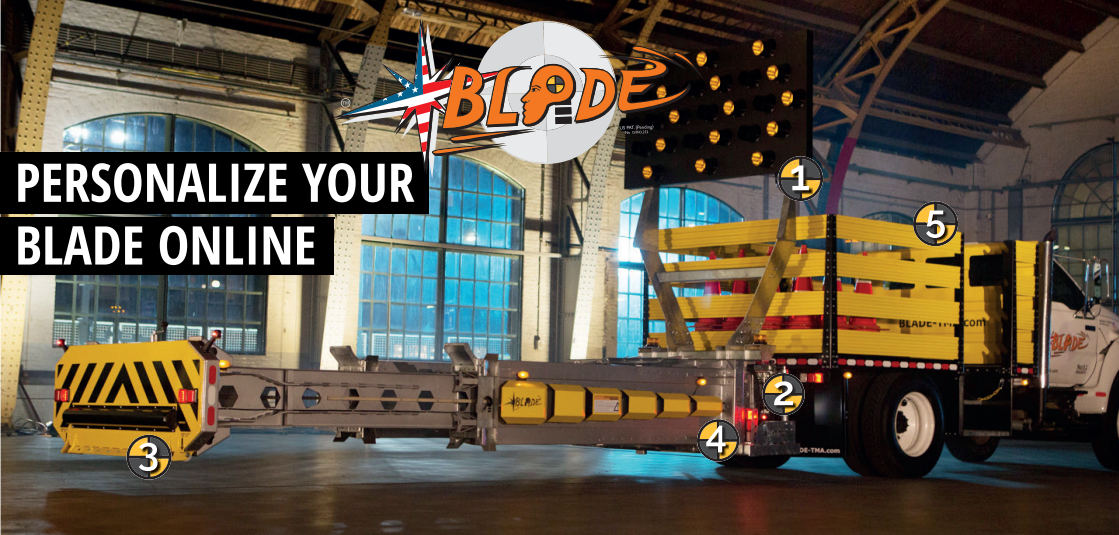
### THIS IS WHY!

- No1 MASH TMA
- FULLY REPAIRABLE
- No1 ON INCREDIBLE TEST RESULTS
- HIGHEST SAFETY LEVEL TMA





# PERSONALIZE YOUR BLADE ONLINE



## Quick connect + level system

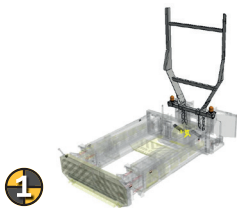
- Standard included; Get your TMA on and off in a couple of minutes
- Also a unique level system is added to adjust it perfectly horizontal

## TABLE OF CONTENTS AND DIMENSIONS

Transport height	12ft.11in	Width:	7ft. 6.7in
Installation length, excl. bracket:	19ft.4in	Level system:	+/- 4 degrees

**WWW.BLADE-TMA.COM**

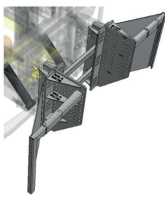
## CHOOSE ACCESSORIES



**1**

### Arrow board bracket

- Full scale crash tested
- Modular
- Galvanized
- Standard for several types of VMS and arrow boards
- LED beacons not included



**2**

### Truck bracket

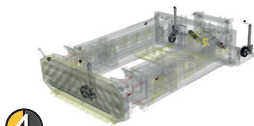
- Full scale crash tested bracket
- Galvanized
- Including fenders (bends away the cutted alu parts during impact)
- Including 6 pieces hitchpins
- All bolts and materials included
- Easy to install! No welding needed
- Anyone can install a TMA in a couple of hours



**3**

### Foil

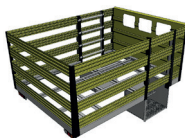
- A black 100mm striping on the hood
- 100mm striping and "caution keep clear" on the middle foil plate
- Other foils on request



**4**

### Jockey wheels

- 3 pieces of galvanized jockey wheels
- One is mounted to the rear hood, and 2 pieces are mounted on the steel galvanized structure. All full-scale crash tested



**5**

### Truck body

- Several dimensions available
- With or without man bucket



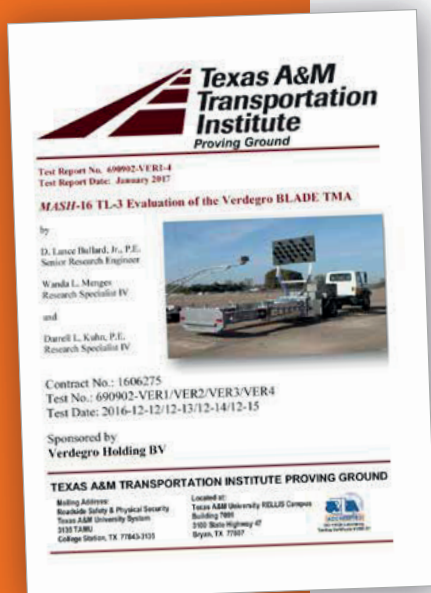
# PROUDLY TESTED IN THE U.S.A.



## No1 ON RESULTS

This patented BLADE TMA is proudly full scale crash tested according to MASH 2016 at the Texas Transportation Institute (TTI), with unbelievable test results!

All the ride down values were within the preferred values ( MASH preferred a Longitudinal ridedown of 15.0 g with a maximum of 20.49 G ). The BLADE TMA is also full scale crash tested according to the UK optional 110Kph test TD49/07. This TMA is the Highest Safety level you can get.



**VERDEGRO<sup>®</sup> USA**  
Delaware USA (Being established)

**SALES@VERDEGRO.COM**  
**WWW.BLADE-TMA.COM**

Verdegro Group | Munnikenheiweg 59  
4879 NE Etten Leur | The Netherlands | +31 (0)76 - 50 17 990  
**info@verdegro.com | www.verdegro.com**

Your distributor