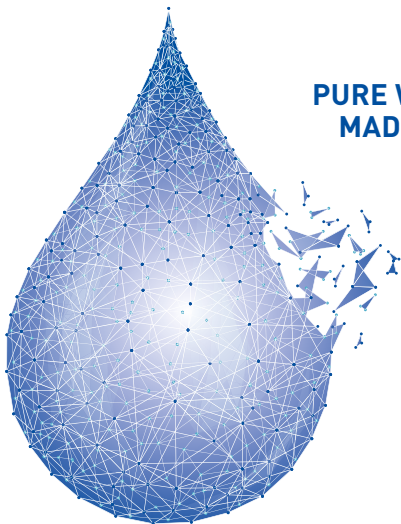




**PURE WATER POWER.
MADE IN GERMANY.**



- **AIRPORT RUNWAY CLEANING**
- **ROAD MARKING REMOVAL**
- **ROAD SURFACE RETEXTURING**

AIRPORT RUNWAY CLEANING SYSTEMS, ROAD MARKING REMOVAL AND RETEXTURING TECHNOLOGIES

SMETS Technology – German know-how and technology for airport runway cleaning, road marking removal and road surface retexturing.

Benefit from over 40 years of practical experience!

YOUR BENEFIT – OUR TECHNOLOGICAL ADVANTAGE

- Lowest water consumption, lowest operating and follow-up costs worldwide
- The only supplier with up to 11 optional extras on all vehicles
- Highest hourly output
- Maximum cleaning performance
- No surface damage due to self-monitoring, intelligent control system
- Centralized control via 12" color touchscreen
- Gentle surface treatment with fastest working speed and easiest operation

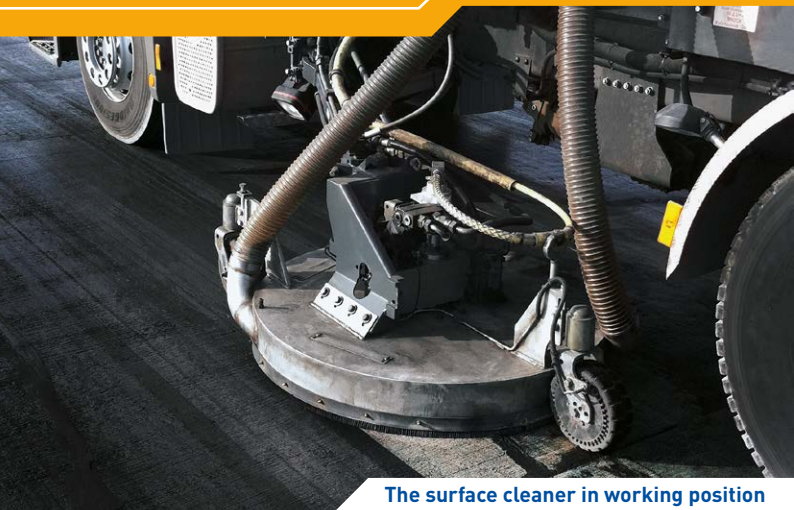
- No use of chemicals or abrasive additives
- Attractive and user-friendly hi-tech compact design
- Environmental and resource-saving ultra-high-pressure hydropower technology
- 4 years warranty on superstructure
- 10 years warranty against rusting or deformation of the tanks
- Vehicles work permanently reliably even at temperatures above 50 degrees Celsius
- Worldwide partner network in more than 50 countries
- Individual equipment - flexible realization through large production network



AIRPORT RUNWAY CLEANER

Our Airport Runway Cleaners with 1,000, 1,500, 2,000 and 2,400 mm working width are characterized by extremely high reliability:

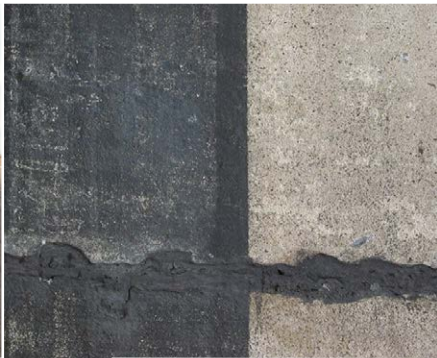
- Safety in case of emergency by clearing the runway within 10 seconds



The surface cleaner in working position



Cleaning results on concrete runway



Even the expansion joint material has not been destroyed

AIRPORT RUNWAY CLEANER



ARC 1000®



ARC 1000®

ARC 1000®

The more movements (take-offs and landings) take place on a runway, the more rubber deposits (or carbon black deposits) remain on the surface.

These deposits lead to poor friction in the rain and thus increase the risk of aquaplaning extremely. This is to be prevented by an effective cleaning/removal.

Various ARC models, with different processing widths and thus different performances per hour of operation, meet the demand of the rapidly growing market.

The ARC 1000® is a system in which ALL units are driven by the vehicle engine (at least 480 PS).

PERFORMANCES ARC 1000®

WORKING WIDTH	1,000 mm
AVERAGE PERFORMANCE	1,200 m ² [rubber removal]
TANK VOLUME (Standard)	13 m ³ [enlargable on request]
MAX. HIGH PRESSURE	2500/3000 bar
MAX. CAPACITY (PUMP)	29 l/min
POSSIBLE OPTIONS	11

AIRPORT RUNWAY CLEANER



ARC 1500® & ARC 2000®

The systems are built on compact 3-axle chassis.

Due to the larger working widths, these two systems provide higher performance than the ARC 1000®.

PERFORMANCES ARC 1500® and ARC 2000®		
	ARC 1500®	ARC 2000®
WORKING WIDTH	1,500 mm	2,000 mm
WORKING WIDTH	1,800 m²	2,400 m² [rubber removal]
TANK VOLUME [Standard]	17 m³	17 m³
MAX. HIGH PRESSURE	2500/3000 bar	2500/3000 bar
MAX. CAPACITY (PUMP)	42 l/min	52 l/min
POSSIBLE OPTIONS	9	9

RETEXTURING & ROAD LINE REMOVAL TRUCK



ARC 2400®

- RUBBER REMOVAL ON RUNWAYS
- RETEXTURING OF ROAD SURFACES
- MARKING REMOVAL

The ARC 2400® is a compact, easy to maneuver vehicle (6x2 chassis) with an extremely high performance.

In addition to the rear jetting device (3 x 800 mm), side jetting devices with a max. working width of 360 mm can be mounted on one or both sides of the truck. Each cleaning device can be activated or deactivated individually.

The ARC 2400® can be used on runways for rubber removal and on roads for marking removal and/or roughening.



PERFORMANCES ARC 2400®	
WORKING WIDTH	2,400 mm
AVERAGE PERFORMANCE	2,800 m² [rubber removal]
TANK VOLUME [Standard]	17 m³
MAX. HIGH PRESSURE	2500/3000 bar
MAX. CAPACITY (PUMP)	62 l/min
POSSIBLE OPTIONS	7

ROAD SURFACE RETEXTURING

Our retexturing vehicles with working widths of 1,000 mm to 3,500 mm roughen runway or road surfaces

- Largest working width worldwide
- Largest working area on a compact chassis



Rear sideways

ROAD SURFACE RETEXTURING



ARC 3500®

ARC 3500®

Our newest product is the ARC 3500®

The ARC 3500® is a compact surface treatment system, which is used in the roughening (re-texturing) of road surfaces. A powerful high-pressure pump generates working pressures of up to 2500/3000 bar and water volumes of up to 72 l/min. Thus, a complete lane on roads and highways can be treated in one go. The 5 cleaning devices, 3 at the rear and one at each side of the truck, with a working width of 800 mm each can be individually activated and deactivated.

Small, inaccessible areas can be handled with the hand cleaner MCD 360 that is available for all our special vehicles.

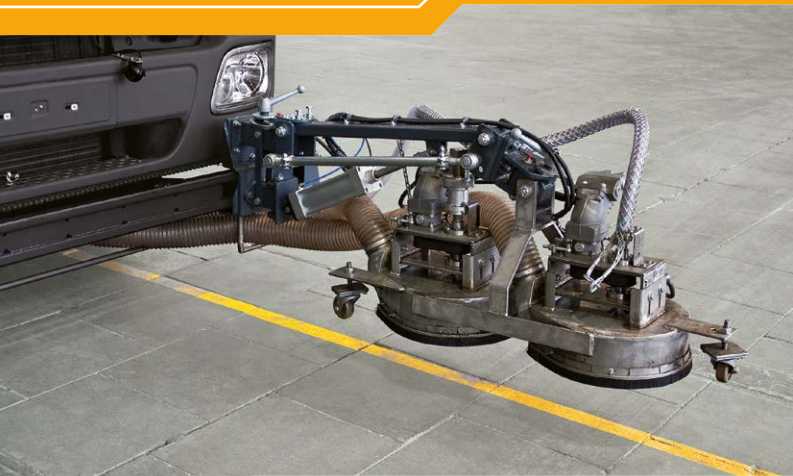
The vehicle can be used for roughening of road surfaces and for rubber removal at a working width of 2,400 mm.

PERFORMANCES ARC 3500®

WORKING WIDTH	3,500 mm
AVERAGE PERFORMANCE	5,000 m ² [retexturing]
TANK VOLUME (Standard)	17 m ³
MAX. HIGH PRESSURE	2500/3000 bar
MAX. CAPACITY (PUMP)	72 l/min
POSSIBLE OPTIONS	5

ROAD MARKING REMOVAL

Our high-performance vehicles provide the most thorough road marking removal from 150 to 500 mm working width. Vehicles can be used on public roads without modification or assembly work and in ongoing traffic (moving roadworks).



Removal device in front of the truck in lifted position



Height adjustable wheels keep the device in ideal working position

ROAD MARKING REMOVAL



MRT 300 / 1



MRT 300 / 2

MRT 300 / 1 & MRT 300 / 2

The removal of road markings (lines and/or traffic signs) by means of high-pressure water is becoming increasingly popular worldwide. The distance with our systems guarantees that no “height profile” is milled into the road surface. Our procedure is gentle and fast.

The models MRT 300/2 and 300/1 differ only in the size of the tanks and the chassis (2 or 3 axles). The marking removal device is mounted on the front of the vehicle. This can be moved over the entire width of the vehicle and swing out additionally thus it can be worked in the ongoing traffic and on the right as well as left of the track.

PERFORMANCES MRT 300 / 1 and MRT 300 / 2

	ARC 300 / 1	ARC 300 / 2
WORKING WIDTH	150 - 360 mm	150 - 360 mm
AVERAGE PERFORMANCE	500 m ²	500 m ² [cold paint]
TANK VOLUME (Standard)	13 m ³	7 m ³
MAX. HIGH PRESSURE	2500/3000 bar	2500/3000 bar
MAX. CAPACITY (PUMP)	29 l/min	29 l/min
POSSIBLE OPTIONS	10	10

PERFORMANCE OF OUR SYSTEMS TO SOLVE YOUR CLEANING TASKS

Our systems work environmentally friendly and gently on large surfaces only with water without the addition of chemicals and/or abrasive additives.

Our know-how acquired over decades enables us to use the power of water under maximum pressure effectively to remove soiling, paint or deposits. Extremely high speed of more than 400 km/h allows the gentlest treatment of the surfaces. The high speed produces drops that bounce on the surface. This creates the necessary energy to remove coatings, but no volume, as in a slow, constant stream of water, to fill cracks or voids, causing breakouts and severe damage.

Our systems are compact (2-, 3- or 4-axle trucks). There is no need to pre-equip or retrofit to carry out work. Every construction site can be left within 10 seconds without leaving any debris or standing water.

A strong, maintenance-free suction fan with a hardened impeller ensures an extremely high air velocity and a large air volume (over 16,000 m³/h) and guarantees that no undissolved substances remain on the worked area.

High-performance high-pressure pumps from well-known manufacturers are used, which generate working pressures of up to 3,000 bar.

Our unique control system does not allow the unit to be damaged by incorrect operation. If the operator adjusts the control system correctly, this also prevents damage to the surface to be processed.

The entire system is controlled and monitored via a 12" flat screen with touchscreen function.

Fault messages are displayed YELLOW in an early warning stage and after touching the warning message on the display, the operator receives clear instructions in national language on what to do to remedy the warning.

If the early warning stage is ignored, for whatever reason, the system will switch to the warning level RED for critical values and will be deactivated.



MRT 300/2 in operation. Dubai



ARC 1500®



Cleaning device

OUR STANDARD EQUIPMENT:

MARKING REMOVAL:

All systems are supplied with an optional marking removal device (working widths from 150 to 360 mm).

TOOL:

Professional tool set in tool trolley (including special pump tool).

WARRANTY:

4 years warranty on our superstructure (except high-pressure pump and chassis).

REMOTE CONTROL:

All systems are equipped with a radio remote control for opening/closing/locking and unlocking the tailgate and for tilting the tank.

If a hand cleaner MCD 360 is ordered, the wireless remote control will be extended to a 10-channel system. The MCD 360 handset can be remotely controlled by one person alone (pressure ON/OFF and pressure UP/DOWN).

WASHING DEVICE:

VA hose reel with high-pressure hose and special washing nozzle fed by the booster pump).

TRAINING:

10 days training at the end customer's premises.



ARC 2400®

POSSIBLE OPTIONS (DEPENDING ON MODEL):

- Hand cleaner MCD 360 controlled by wireless remote control
- Fire extinguisher with console and installation box
- Front-mounted marking removal device, 360mm, slidable and swingable over the entire vehicle width
- Additional construction of a walk-in workshop between tank and driver's cabin
- Permanent magnet mounted under the front of the vehicle – controlled from driver's cabin
- Water recycling – partly possible until critical temperatures are reached
- Additional high-pressure washing device with a second high-pressure pump and capacities of up to 200 bar and 30 l/min. System complete with VA hose reel, hose and gun
- Sweeping and suction gear unit mounted on the opposite side of the cleaner
- Rear grit suction and washing unit up to 200 bar. High pressure washing with simultaneous complete suction (cleaning down to the pores).
- Rear suction hose DN 200 with pneumatically supported extension arm
- Line Laser
- Larger tanks



SMETS TECHNOLOGY GMBH
Handwerkerstrasse 5a
15366 Hoppegarten
GERMANY

Tel. +49 (0)3342 508 95 40
Fax: +49 (0)3342 508 95 45
info@smets-technology.com
www.smets-technology.com