

# Modern parking and access systems

Modular and ready for the future

**Discover now >>**



***bebarmatic***<sup>®</sup>

---

FIRST CLASS PARKING



## Welcome to the bebarmatic family

### Just an empty phrase? On the contrary!

*Family is synonymous with team spirit, reliance, structure and safety, partnership, the development of competences – and a network one can be proud of.*

That is why we consider our new clients as well as our long-term customers members of our bebarmatic family and we will demonstrate that we are more than a supplier for you – namely your partner.

We would like to show you that we listen attentively to your needs and understand not only your technical but also your commercial requests.

We would like to support your confidence in having chosen a reliable

product in modern design that will be present for many years.

Moreover, we would like to assure you that you are not left alone but can count on our team and the pooling of all capacities if difficulties come up or there are questions arising in your daily business or there are changes in operational sequences.

Jointly, we want to advance ourselves and our bebarmatic products so that we may adapt them to

your requirements and technical changes and trends. By cooperating with you we strive to understand your necessities.

Eventually, the point is that we feel proud of joining our technical efficiency in providing solutions and the form of cooperation being noticeably different.

Uncomplicated, solution-oriented and cooperative – including mutual understanding and acceptance.

### » Welcome to the bebarmatic family!

**Thomas Stroinski**  
*Managing partner*

**Bernd Beckers**  
*Managing partner*



## Made in Germany

Professional. Safe. Sophisticated.



## Our promise for quality

*for all system components*

### Planning

After placing your order your project will be well taken care of by us – your personal project manager will support you and your project thoroughly.

His first task will be to plan production of your hardware together with you and our manufacturing department and clarify your individual requests for operations with our software development department.

### Manufacturing

Your products will be manufactured by our suppliers of metal constructions located in the South of Germany and our manufacturing department in Duisburg.

This is effected in close coordination with all sub-divisions always respecting the delivery date in relation to the on-site assembly date agreed with you.

### Execution

At the end of the manufacturing process the software developed by our professional developer team in Duisburg is implemented.

A close cooperation of our hardware and software experts guarantees an intensive quality control from the first production step to the final testing of the configured system in our test area in Duisburg. Only then, delivery is “green-lighted”.

**» This ensures the high quality of our products even before they are delivered and mounted at your premises.**

# Parking system **Platinum Modular**

*Modular parking system featuring a considerable product family for the management of your parking spaces.*



**Option including**  
lighting top  
and weather  
protection roof!



## **Pay station**

- Ticket entry including receipt- and report output function
- 7" IPS PCAP touchscreen
- Position independent bank note processing

## **Entry/Exit terminal**

- Elegant stainless steel housing
- Multipurpose front
- High-end barcode-technology
- Ticket separation without cutting tool

## **System architecture**

- Industrial standard Linux embedded PC
- Ethernet –TCP/IP protocol interface
- Software incl. SQL database and extensive evaluation



### be.Access terminal

- Access control for employees and subscriber parking areas
- User guidance via TFT-display
- Integration of all popular reading methods

### be.Access Gate

- Access control for VIP parking areas and building entrances
- User guidance via TFT-display
- Integration of all popular reading methods

### Cashless pay station

- Acceptance of all popular bank and credit cards
- NFC reader for contact-free payments
- Reduced handling/insurance fees

# Cockpit for your parking management

*So that you may keep the overview at any time.*



**Universal  
interfaces**  
to external  
systems

## Software and development



### **Software** be.open

- Central administration of plant configuration / software releases, modular design
- Just-in-time-display of plant status
- Issuing of all standard reports / customer-specific adjustments acc. to parking areas, discounts and periods



### **Software** development

- Qualified in-house team of developers
- Customer-specific, individual solutions
- Sectoral implementations

## Administration and Controlling



### Management of short and long-term parkers

- Media-free including recognition of barcode, QR-Code, license plates or UHF-tags
- Application of various special tickets and parker types
- Preservation of all data to control operative processing as well as reporting and analysis



### Counting management

- Individual adaptable to all requirements
- Block building of groups
- Specification of threshold and maximum values



### Password protected access

- Specification of individual user rights
- Encrypted communication of the system
- Revision-safe storage of customer and cash-flow data in a central database



### Remote maintenance and analysis

- Remote maintenance via established remote maintenance software
- Analysis of malfunctions down to hardware level
- Updates/new software releases can be managed centrally



### Support and training

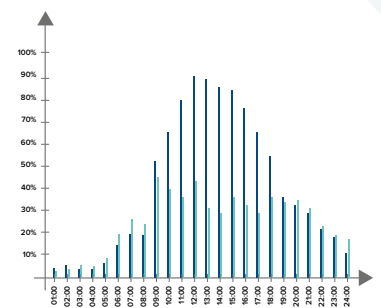
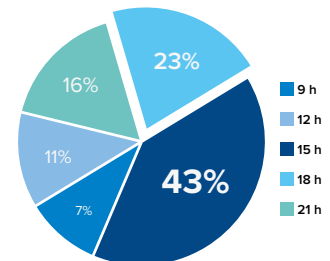
- High reliability via fast assistance in case of service
- Service concept tailored to your needs incl. focused fast processing
- Individual know-how-transfer via training for administrators and users



### Special solutions

- Specific sector solutions
- Integration of external software via SOAP-interface
- Mapping of events and presentations incl. individual tariffing

## On- & Offline Statistics. Management.



**Time zones**

Time zone: [16] Pay station working hours | New time zone | Clear time zone

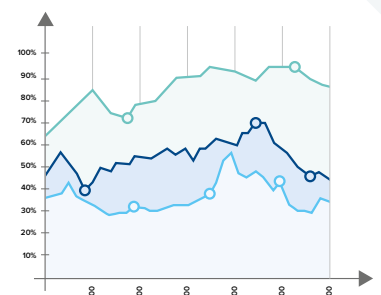
Item: Pay station working hours | Shift

**Access periods**

Day	from	to	Access granted	Shift
Monday	from 08:00	to 17:00	Access granted	Shift
Tuesday	from 08:00	to 17:00	Access granted	Shift
Wednesday	from 08:00	to 17:00	Access granted	Shift
Thursday	from 08:00	to 17:00	Access granted	Shift
Friday	from 08:00	to 17:00	Access granted	Shift

**Add time period**

Friday | from 08:00 | to 17:00 | Access granted | Add



	2015	2016
<b>Car park 1</b>		
Short term parkers .....	225,242	237,282
Subscribers reserved .....	949	945
Daily parkers unreserved .....	996	1,029
Further subscribers .....	17	25
<b>In total</b>	<b>227,204</b>	<b>227,204</b>
<b>Car park 2</b>		
Short term parkers .....	324,666	287,326
Subscribers reserved .....	1,872	1,788
Daily parkers unreserved .....	1,095	1,227
Further subscribers .....	22	23
<b>In total</b>	<b>554,655</b>	<b>529,364</b>

## Access options



### Barcode / QR-Code

- Wear-free reading
- Reading of 1D-, 2D- and QR-barcodes possible



### RFID

- Contact-free reading
- Full integration of cards provided by the customer into the parking system
- Range up to 5 cm



### UHF

- Contact-free long range reader
- Tamper-proof, battery-free windshield transponder
- Range up to 4 m



### License plate recognition

- Access control via license plates
- Video camera system via Ethernet
- Optional ticket printout incl. license plate data



### PIN-Code

- Temporary access authorisation for various application areas such as hotels, car rentals, selfstorage systems etc.



### Mobile Apps

- Connection to e-ticket and reservation systems
- Use of cell phones and smart watches for finding parking space and processing of payment



# Equipment upgrade

*For optimal adjustment of our parking systems to your requirements we offer a wide range of customised solutions and optional features*

**Please do not hesitate** to contact us for further information.



## Intercom

- Trouble-free communication with your customers
- Stable voice quality
- Option: connection to existing intercom



## Video

- Improvement of objective and subjective safety
- High-quality image recording
- Simplified cabling by using the parking system network



## Credit card module

- All bank and credit cards incl. NFC accepted
- Secluded integration into pay station front
- Latest safety and EMC approval



## Table-top encoder

- Issuing of individual and serial tickets replacement tickets and receipts at the POS
- High performance printing



## Discount validator

- Offline discounting and activation of tickets without cable link to the parking system
- Four different freely selectable and cumulative discount levels
- Ideal for use in shopping centres and hyper markets
- Transparent presentation of chosen discounts



# Barrier systems

*Future-oriented access control based on more than 40 years of know-how.*



Access control  
and structuring  
of parking spaces

## Technical data

- Self-supporting in boom lengths from 2.5 to 9.0 m
- Timeless, elegant design
- Intelligent frequency converter control

## Advantages

- Providing park spaces for specified user groups  
e.g. employees and customers
- Protection of factory premises and plant grounds

## Equipment

- Mechanical locking in final positions
- Sinusoidal motion sequences
- Option: LED boom lighting

## Access systems for vehicles



### Barrier **PS Platinum**

- **Boom length:** self-supporting up to 4.0 m
- **Opening speed:** 1.5 up to 2.8 sec.
- **Weight:** approx. 75 kg
- **Colour of housing:** RAL 9003 signal white
- **Colour of cover:** RAL 7042 traffic grey A
- **Opening in case of power failure:** friction clutch
- **Housing:** galvanized steel chassis with aluminium cladding
- **Final position mechanically locked:** yes
- **Voltage:** 230/400 V
- **Power input:** 0.37 kW



### Barrier **TSD 60/45**

- **Boom length:** 6.0 m
- **Opening speed:** 4.5 sec.
- **Weight:** approx. 90 kg
- **Colour of housing:** RAL 9003 signal white
- **Colour of cover:** RAL 7042 traffic grey A
- **Opening in case of power failure:** friction clutch
- **Housing:** galvanized steel chassis plus 3-part shells of high-grade glass-fibre reinforced plastic
- **Final position mechanically locked:** yes
- **Voltage:** 230/400 V
- **Power input:** 0.37 kW



### Barrier **TSDH 90/70**

- **Boom length:** 9.0 m
- **Opening speed:** 7.0 sec.
- **Weight:** approx. 200 kg
- **Colour of housing:** RAL 9003 signal white
- **Colour of cover:** RAL 7042 traffic grey A
- **Opening in case of power failure:** crank handle
- **Housing:** Coated steel chassis plus 3-part shells of high-grade glass fibre reinforced plastic
- **Final position mechanically locked:** yes
- **Voltage:** 230/400 V
- **Power input:** 0.37 kW

## Accessories



Barcode/QR-Code



UHF



Video



Intercom



PIN code



License plate recognition



RFID



Smartphone



Token



Dedicated and  
goal-oriented –  
for your project

## Our staff

*Our employees are unique – regarding their education, their work style, their personal strength and temperament. We would like to introduce some characters to you, who you will meet when your projects are processed.*

### The project manager

Managing your project he is your first contact. The „spider in the web“ where all strings come together. He is your connection to our various divisions. The person in charge ensuring that your project is running smoothly.

### The support manager

Your contact after commissioning your system. He is the firefighter who is reachable in case a problem is arising. The analyst, who identifies the problem and looks for a solution together with you. He is the communicator who supports you and provides quick help. If necessary, he will send a service technician.

### The service technician

The „go-getter on site“ building up your system and bringing it to life. He is the „builder“, who ensures steady availability of all components for a long time. The troubleshooter on site, if spontaneous and creative solutions are needed in spite of careful installation planning. He is the „Blue angel“, who executes maintenance services ordered by you and who is by your side in case of unexpected system failure. Committed and focused on your project.

## Our partners

For you. On site.



## Pan-European Service & Support

*Our problem-solving service team provides pan-european assistance to ensure smooth operation of your parking systems.*

Our headquarters being based in Duisburg, we cooperate closely with specialised companies at many locations in Germany and abroad. So, constant service is given at any time.

### **Our service standards for your satisfaction**

- Pan-European partner network
- Central hotline
- Easy accessibility

### **International representatives in:**

- Austria
- Croatia
- Estonia
- Finland
- Gulf Cooperation Council (GCC)
- Hungary
- Ireland
- Luxemburg
- Netherlands
- Norway
- Poland
- Portugal
- Romania
- Sweden
- Switzerland
- Spain
- United Kingdom

# Our target industries

*The individual requirements of joint projects are as diverse as our customers.  
We develop fairly viable solutions from the first idea to a steady operation showing  
that we understand you and your industry.*



Car park operators



Service companies



Airports and  
important junctions



Hotels



## Please ask!

*We would like to provide further information and examples of projects that are tailor-made to the specific requirements of your sector.*

## We are here for you:

*By phone*

**+49 203 800 23-0**

*or via e-mail*

**info@bebarmatic.de**



**Medical centers  
and hospitals**



**Municipalities  
and local authorities**



**Shopping malls  
and leisure facilities**



**Industry**





***bebarmatic***<sup>®</sup>

FIRST CLASS PARKING

**bebarmatic Parksysteme GmbH**

Vinckeweg 15 · 47119 Duisburg  
Germany

Phone: +49 203 800 23-0

Telefax: +49 203 800 23-33

Mail: [info@bebarmatic.de](mailto:info@bebarmatic.de)

[www.bebarmatic.de](http://www.bebarmatic.de)