

AGD 645

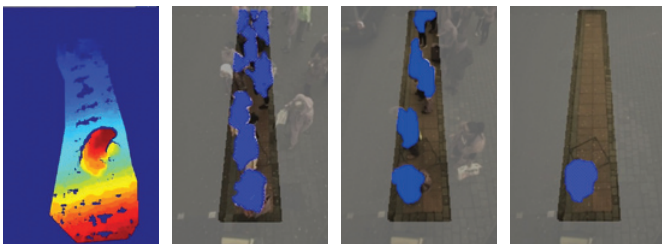
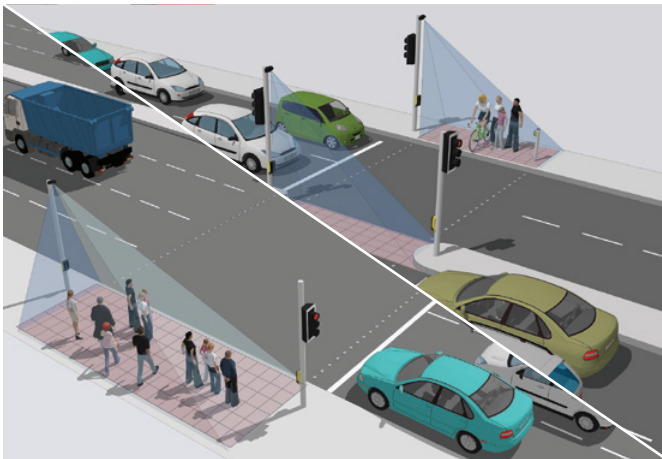
PEDESTRIAN DETECTOR

The AGD 645 Pedestrian Detector is a smart, optical, dynamic environment detector that makes crossings safer and more efficient by delivering robust Volumetrics Data within large 10m x 3m zones. Multiple units integrate to cover 'super-crossings'.

It is a high-performance product that processes information on board with new chip-set and sophisticated algorithms for automated decision-making to provide ultra-reliable detection.

The AGD 645 employs 3D HD stereo-optics to detect stationary & moving targets over a large 10m x 3m zone and provides Volumetrics Data in the form of percentage occupancy. It has an outstanding capability to detect people while rejecting shadows, litter and leaves and small objects such as birds walking through the zone.

The platform covers the needs of 'Smart City' systems with: IP, POE, Volumetrics and real-time video capabilities which allow the 645 to feed data and pictures 'down the wire' straight into ITS control rooms - empowering truly informed dynamic decision-making.



Features

- 10m x 3m zone - save on infrastructure costs
- AGD 3D HD stereo-vision - down to min 15 lux
- Volumetrics – dynamic data for high efficiency
- WiFi AGD Touch-setup - speeds installation & reduces risk
- Quick-mask tool - easy zone selection
- IP & Real-time video - instant information for improved safety

AGD Volumetric

DYNAMIC ENVIRONMENT DETECTION

Traffic & Pedestrian Control



safer, greener, more efficient

AGD 645

PEDESTRIAN DETECTOR

PRODUCT BROCHURE

AGD Touch-setup

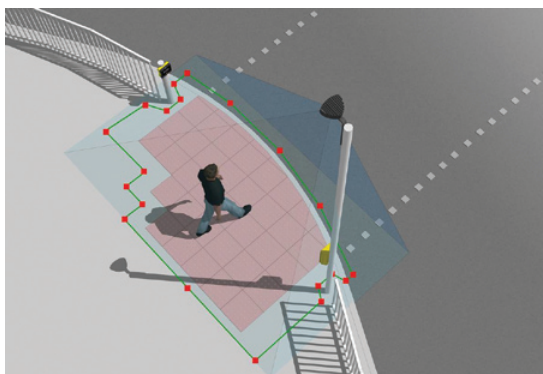
WIFI 3-CLICK TOUCH-SETUP

WiFi AGD Touch-Setup with Quick-mask 'zone' Tool

The 645 is quick to setup using any WiFi device - smart-phone, tablet or laptop - with its unique & secure AGD Touch-setup that allows installers to configure the device in three simple steps:

1. Name device
2. Select zone & Volumetrics
3. Click to calibrate

Multiple AGD detectors may be setup at the same time from a safe position on the ground, or in a vehicle up to 100m away. Conveniently, the AGD 645 can be adjusted for zone changes just as quickly in the same way.



AGD Quick-mask 'zone' tool

The smart AGD 645 provides even greater performance over a much larger area than its partner product, the exceptional AGD640 which is used on over 15,000 sites worldwide providing reliable detection for pedestrians and cyclists.

The IP capable

AGD645 is

the ideal

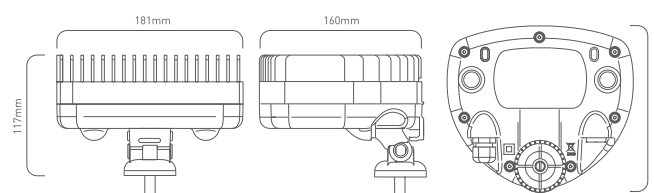
detection solution for larger kerbside and wait zones - particularly where efficiency enhancing Volumetrics Data in the form of percentage occupancy is required.

AGD Volumetric
DYNAMIC ENVIRONMENT DETECTION

Product Specification

Description	Pedestrian Detector
Technology	AGD 3D HD Optical Stereo Vision
Detection Zone	10m x 3m (Polygonal Mask Set-up)
Mounting Height	3-6m Nominal
Power Supply	24V AC/DC
Power	8.0W @ 24V AC/DC (330mA)
Detect Output	Single Opto / IP Ready
LED Indication	Front LEDs for detect and WiFi connection
Real-time Video	Yes
Housing Material	Black Polycarbonate / Aluminium
Sealing	IP65
Operating Temp	-20°C to +60°C
Configuration	WiFi AGD Touch-Setup
Lux Level	Below 15 lux an infrared illuminator such as a Raytec VAR-12-1 is recommended
Dimensions	W 181mm x D 160mm x H 117mm
Weight	1400g
Complies with	BS EN 50293, BS EN62368, Type Approval Ref: AGD AP601113
Patent No.	GB 2448617

Dimensions



Tested and AGD Certified

All AGD products are Tested, Calibrated and AGD Certified so customers know that all devices will perform exactly as described.

agd-systems.com

AGD
PRODUCT SOLUTIONS FOR
INTELLIGENT TRAFFIC SYSTEMS

safer, greener, more efficient