

**SOLAR ROAD STUD**  
YOUR SAFETY EYES

# SR-i15

## SOLAR ROAD STUD



### TECHNICAL FEATURES

- Use of microcontroller technology
- Appropriate for regular traffic zones and areas of poor visibility
- Ideal for road delineation, bends/curves, crosswalks among others applications
- Rising from road surface of 12,7mm
- SLEEP mode to prevent discharge during storage/transport
- Constant brightness during all functioning period
- Protection against deep discharge of the batteries/capacitors
- High performance photovoltaic solar module
- Energy storage in super capacitors or batteries
- Internal prismatic system
- No oxidation problems
- Up to 1Km visibility distance due to high intensity LEDs
- Many LED's color options for all kind of applications

### MODES OF OPERATION

Always On or Flashing

### LED'S CONFIGURATION

Unidirectional or bidirectional

### ELECTRICAL FEATURES

**Power Supply:** Battery or Capacitor

**Always On:** 1000h (Battery), 35h (Capacitor)

**Flashing:** 2500h (Battery), 70h (Capacitor)

**SLEEP mode autonomy:** 12 Months

### OPTICAL FEATURES

**LED's Quantity:** 1 or 2 LEDs (Unidirectional), 2 or 4 LEDs (Bidirectional)

**LED's Type:** 5mm

**LED's Color:** White, Warm White, Red, Amber, Green, Blue

**Viewing Angle:** 15.°

### MECHANICAL FEATURES

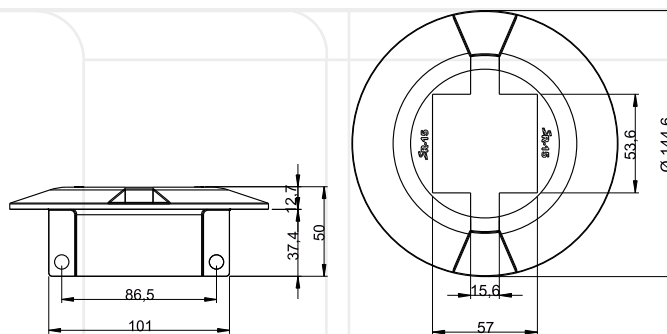
**Dimensions:** Ø144,6 x 50 mm

**Weight:** 0.5 Kg

**Material:** Polycarbonate

**Mechanical Resistance:** 60 Tons

**Protection Index:** IP68 and IK10



Dimensions: mm