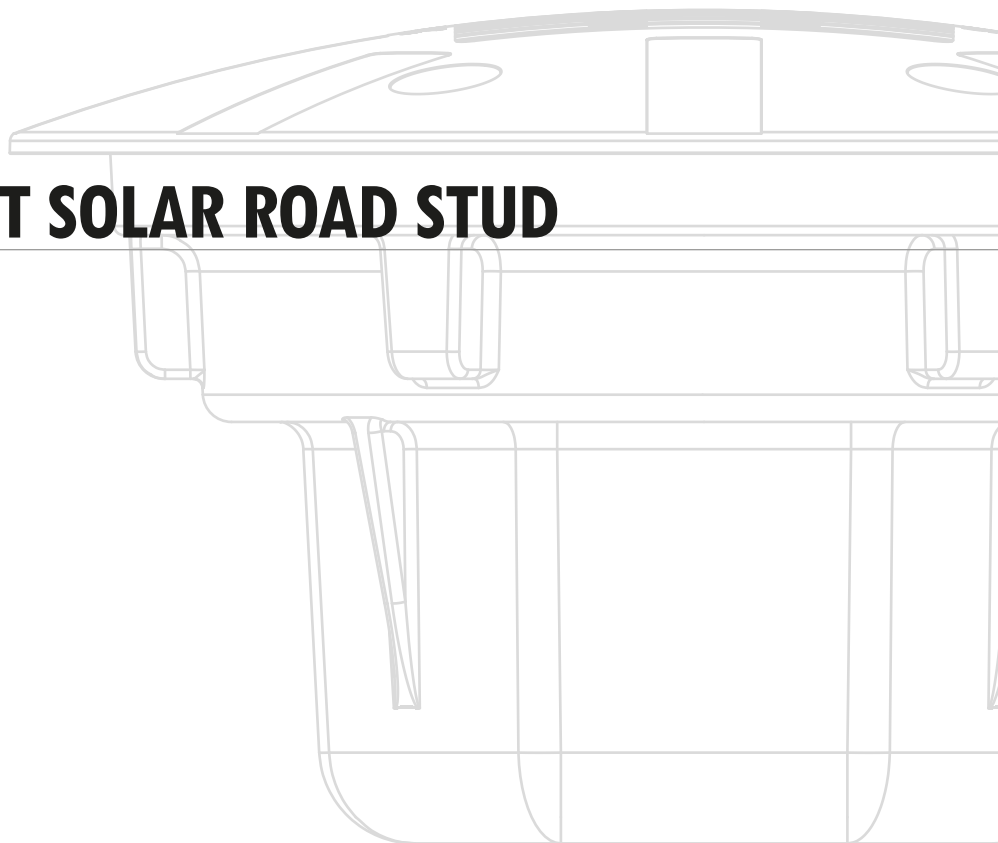


**360° INTELLIGENT SOLAR ROAD STUD**  
YOUR SAFETY EYES



# SR-i35

## 360° INTELLIGENT SOLAR ROAD STUD

### TECHNICAL FEATURES

- Use of microcontroller technology
- Well-suited for road areas with cycling infrastructures and pedestrian zones
- Minimal rising from road surface in order to not disrupt the circulation of bicycles
- 360° Lighting
- Rising from road surface of 17mm
- SLEEP mode to prevent discharge during storage / transport
- Constant brightness during all functioning period
- Protection against deep discharge of the batteries / capacitors
- High performance photovoltaic solar module
- Energy storage in super capacitors or batteries
- Internal prismatic system
- Many LEDs color options for all kind of applications
- Easy maintenance

### MODES OF OPERATION

Always On or Flashing

### LED'S CONFIGURATION

Multidirectional

### ELECTRICAL FEATURES

**Power Supply:** Battery or Capacitor

**Always On:** 1000h (Battery), 35h (Capacitor)

**Flashing:** 2500h (Battery), 70h (Capacitor)

**SLEEP mode autonomy:** 12 Months

### OPTICAL FEATURES

**LED's Quantity:** 4 LEDs (Multidirectional)

**LED's Type:** 5mm

**LED's Color:** White, Warm White, Red, Amber, Green, Blue

**Viewing Angle:** 15.0°

### MECHANICAL FEATURES

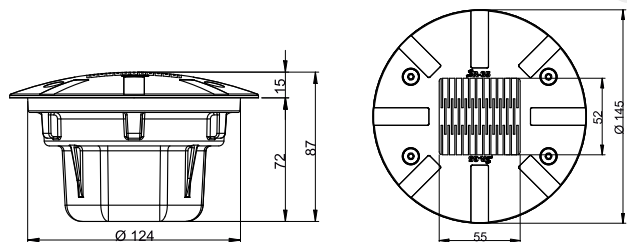
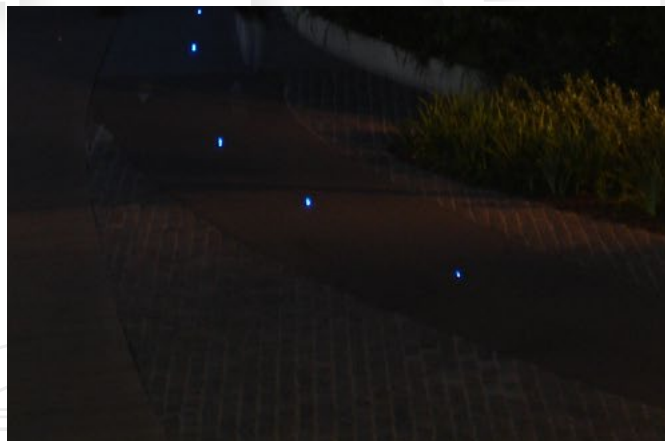
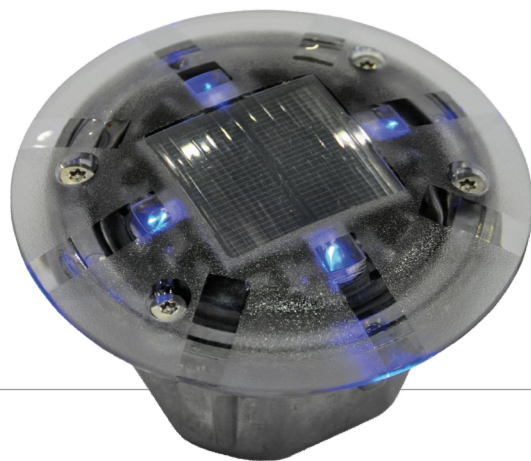
**Dimensions:** Ø145 x 89 mm

**Weight:** 1 Kg

**Material:** Aluminum and Polycarbonate

**Mechanical Resistance:** 18 Tons

**Protection Index:** IP68 and IK10



Dimensions: mm



Quinta do Carreiro, Lote 9/14 - Frossos  
4700-154 Braga - Portugal  
TEL.: +351 253 300 440 | FAX: +351 253 300 449  
E-MAIL: sernis@sernis.com | SITE: www.sernis.com

NORTE2020

PORTUGAL 2020

EUROPEAN UNION

15/02/2019  
Rev.2