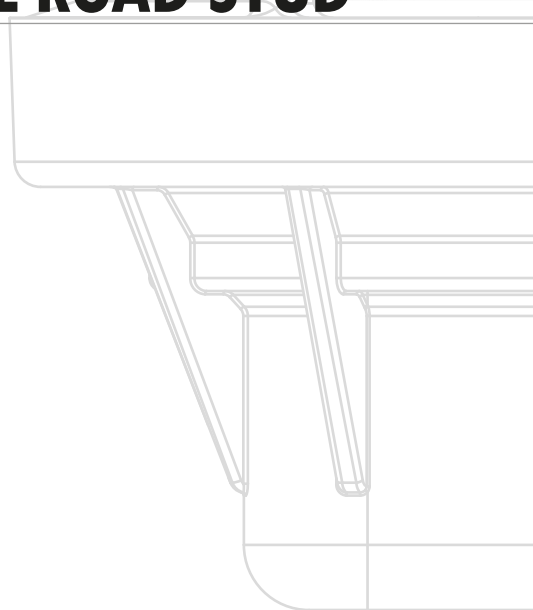


**FLAT POWERFUL AND ROTATIONAL ROAD STUD**  
YOUR SAFETY EYES



# SR-50



## FLAT POWERFUL AND ROTATIONAL ROAD STUD

### TECHNICAL FEATURES

- Suitable for regular traffic areas of heavy vehicles
- Possibility of rotation after installation
- Low profile with only 4mm of maximum height above road surface
- High mechanical resistance: up to 160 Tons
- Ready for snow plough machines
- Robust construction, suitable for harsh conditions.
- High power LEDs with 1W each
- High visibility due to power LEDs even in adverse weather conditions
- It allows drivers a higher reaction time due to the lighting range
- High brightness during day and night
- Possibility of different color on each side
- Easy maintenance

### MODES OF OPERATION

Always On

\*Other modes of operation like flashing or sequential are available with external controller

### LED'S CONFIGURATION

Unidirectional or bidirectional

### ELECTRICAL FEATURES

Power Supply: 24V DC

Current Consumption: 200 mA

Power Cable: Wire 1 (+) | Wire 2 (-) | Wire 3 (PWM)

Working Temperature: -25 °C to +85°C

### OPTICAL FEATURES

LED's Quantity: 2 or 4 LEDs (Unidirectional); 2 + 2 LEDs (Bidirectional)

LED's Type: Power LED

LED's Color: White, Warm White, Red, Amber, Green, Blue

Viewing Angle: 16.°

### MECHANICAL FEATURES

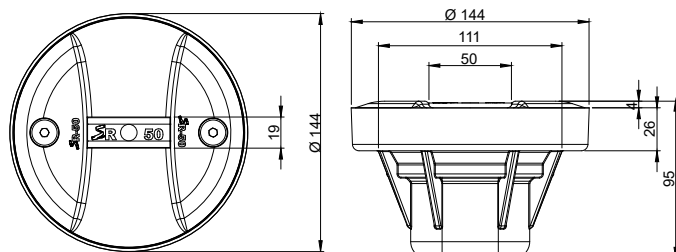
Dimensions: Ø144 x 95 mm

Weight: 2,2 Kg

Material: Bottom Part: Aluminum; Top Part: Hard stainless steel league with good corrosion resistance and polycarbonate window

Mechanical Resistance: Up to 160 Tons

Protection Index: IP68 and IK10



Dimensions: mm



Quinta do Carreiro, Lote 9/14 - Frossos  
4700-154 Braga - Portugal  
TEL.: +351 253 300 440 | FAX: +351 253 300 449  
E-MAIL: sernis@sernis.com | SITE: www.sernis.com



03/03/2018  
Rev.1 150.0