



**BLASTRAC 2-45DTM TRUCK MOUNTED SYSTEM**  
FOR RUBBER REMOVAL AND ROAD RETEXTURING



## BLASTRAC 2-45DTM TRUCK MOUNTED SYSTEM

A SHOT BLASTER TO CLEAN AND RETEXTURE CONCRETE OR ASPHALT

THIS MACHINE IS A COMPLETELY SELF-CONTAINED SHOT BLASTER IDEAL TO REGENERATE THE MACRO AND MICRO TEXTURE OF ROAD AND RUNWAY SURFACES.

The Blastrac 2-45DTM shot blaster is the workhorse of the horizontal blast cleaning machine equipment line. The 2-45DTM is completely self-contained and is ideal for surface preparation specialists, doing jobs with limited downtime allowed for jobs such as:

- Roads
- Highways
- Runways
- Bridges
- Cycle lanes
- Ramps

The 2-45DTM is a shot blaster that is delivered "turn key" and is very user and environmentally friendly. Blastrac is the most experienced manufacturer of equipment for shot blasting roads and runways world wide. Our 2-45DTM is the best possible and most cost effective and efficient solution to regenerate the macro and micro texture of road and runway surfaces. Because of its high performance and reliability it is possible to treat a surface of up to 3000 m<sup>2</sup> per hour on roads and runways.

**"BEST POSSIBLE, MOST COST EFFECTIVE & EFFICIENT SOLUTION TO REGENERATE ROAD & RUNWAY SURFACES"**



1150 MM



1750 KG (WITHOUT SIDE SHIFT AND DRIVE UNIT)



1250 MM | 1300 MM | 1300 MM (2-20DTA)



UP TO 3000M<sup>2</sup>/H ON CONCRETE OR ASPHALT



0,5 - 40 M/MIN



CONCRETE / ASPHALT / STEEL

**"OPTIMAL USE ON ASPHALT AND CONCRETE, BUT CAN ALSO BE USED ON STEEL"**





## 2-45DTM MAIN ASSETS

---

- Closed circuit which is dust free
- Excellent separation system dust / abrasives by improved magnet separation system
- Magnetic separator, to perform well on sticky coatings and big quantities of dust
- 2 x 30 kW High power hydraulic motors
- Versatile / Heavy duty / High performing machine
- Optimal use on asphalt and concrete, but can also be used on steel
- Homogenous blast pattern as well for light as heavy blasting purposes.
- Can be used for floor preparation / renovation / maintenance and decorative purposes

### CABIN

All important processes are carried out by the machine operator, working from an enclosed cab from where he is able to control everything, with one user friendly touch screen. Every single blast head operational function can be manipulated by the combination of a touch screen and joystick panel. This system is designed to make the operating of this total concept as easy as possible. Once all the settings, for example the drive speed and blast pressure, are set to the ideal for the surface to be treated, it's simply a matter of pushing 2 buttons and the truck starts driving and blasting as the previous setting.

### TRANSPORTATION

Speciality contractors can drive to the job with all equipment, personnel and supplies safely in a single vehicle. All controls, dust collection, spares, consumables and blast head, are protected in an enclosed truck body. The first thing to do is unload the Blastrac 2-45D blast head that is stored and secured by a wheel lock system, heavy load binders and straps in the back of the truck. Use the tail lift which is a specially made for heavy loads and has a long lifting plate with special tools to secure the blast unit. Suction hoses are placed very easily due to a very efficient storing and mounting system.

---

### ENGINE & HYDRAULICS

The BLASTRAC 2-45DTM has side shift. During blasting or from stand still it is possible to shift the blast head from the total left side to the total right side, outside the reach of the wheels of the truck. This enables blasting as close to the sides as is possible. The 2-45DTM is powered by a 6 cylinder, 10.8 litre, diesel engine, and is equipped with the most modern hydraulic and electronic technologies. The 2-45DTM is a hydrostatically driven unit for a perfectly homogenous result.



## CONNECTING THE SIDE SHIFT & BLAST HEAD

Once the blast head is positioned in front of the adaption plate on the front of the truck you only have to connect four hydraulic hoses and one electrical connector. The quick attach system takes care of an easy and safe connection of the complete side shift and blast unit onto the adaption plate of the truck. All that is needed is to push one button on the touch screen panel and secure the connection with heavy sliding bolt system.

## AUTOMATIC SWEEPER

Blastrac 2-45TBS is a fully automatic tow behind sweeper for the use in combination with the 2-45DTM truck mounted shot blast unit. The 2-45TBS is equipped with the latest technologies and safety requirements.

## SAFETY

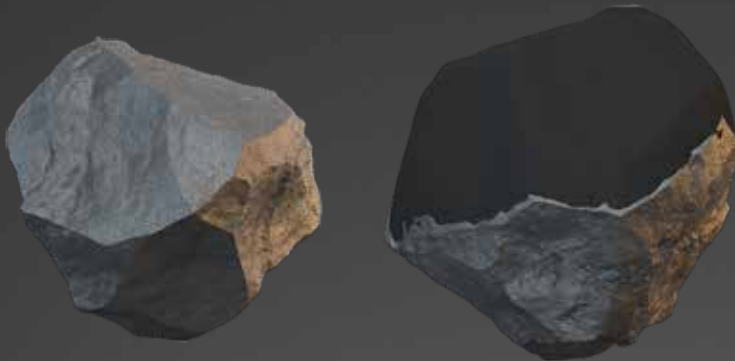
The BLASTRAC 2-45DTM is equipped with the latest technology regarding safety. There are dead man switches located inside the cabin as well as 2 pieces inside the truck body. Because of the low noise level it's not necessarily to wear ear protection in the cabin. In front of the truck there's a double flashing light bar for traffic approaching in opposite direction. Latest technology of flash lights, located on the rear of the truck body with different patterns for optimum safety during day and night for personal as well for traffic approaching from behind.





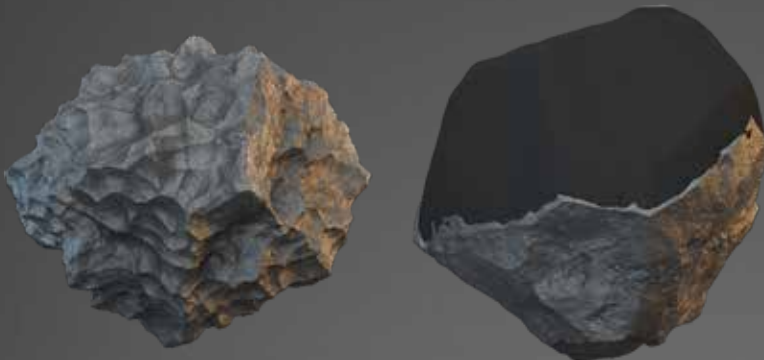
## REGENERATE ROAD AND RUNWAY SURFACES

---



MACRO TEXTURE

---



MICRO TEXTURE

---



### MACRO TEXTURE

Macrotexture is the space or voids between the aggregate particles. The texture depth / macro texture of an asphalt pavement surface will normally be between 1.0mm to 1.5mm. It is this macrotexture which allows the water to drain away from the surface and greatly contributes to skid resistance in wet conditions.

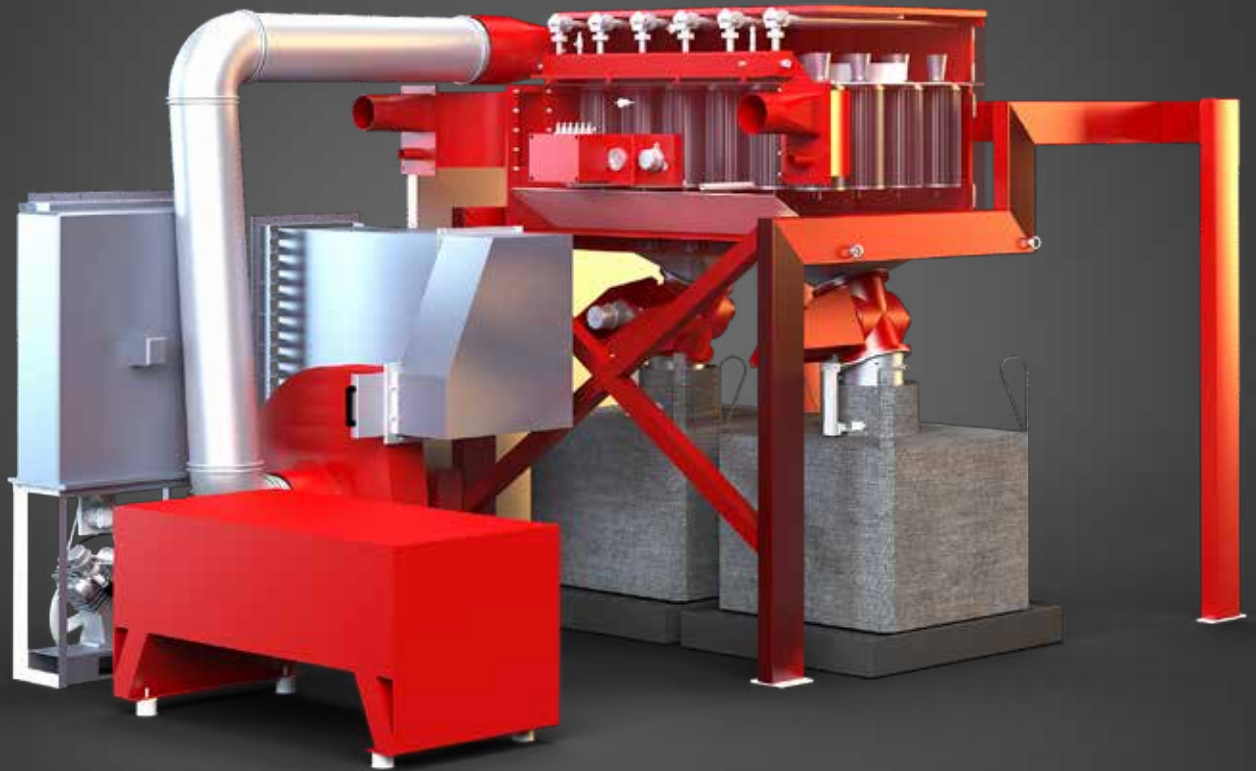
Shot blasting is a very cost effective, environmentally friendly and high performance technology for reducing the danger of slippery highways & runways. It will remove rubber deposits and will bring the surface macrotexture back to that of the aggregates ability.

### MICRO TEXTURE

Microtexture is the fine component of surface texture formed by the tiny interstices on the surface of the aggregate particles. It is the main contributor to providing grip or skid resistance with the tyre, particularly at low speeds. Microtexture is measured by PSV using the British Pendulum Tester or by mobile methods such as the Griptester or SCRIM.

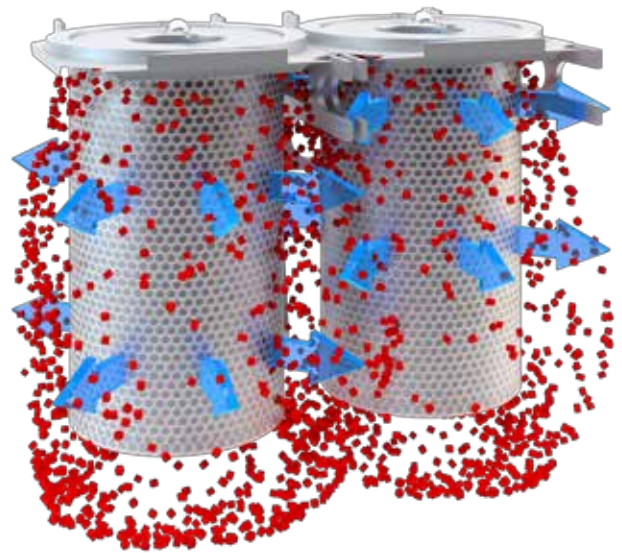
Shot blasting is the only technology that will restore Micro-Texture values to pavement surfaces. Improvement of Micro texture with the shot blasting process is extremely effective. It will in all cases bring back the full benefit of the PSV of the aggregate as per its original properties.





## DUST CONTROL

While blasting large surfaces, big quantities of debris are produced, depending on the surface, concrete or asphalt and the grade of pollution. Debris production can vary between 1 and 2 tons per hour. Due to a sophisticated magnetic separation system the 2-45DTM shot blast machine is able to automatically separate the generated dust from the steel shot to reuse it again. When the dust is separated in the blast head the dust will be sucked away by a very powerful dust collector, "The 2-45TDC" through the connected hoses. This dust collector is equipped with 24 pieces of specially designed high quality Blastrac cartridge filters to separate the debris for further internal transport. Due to new technology used in this new concept of dust collector it is able to transport all generated debris directly into 2 Big Bag's. This is a continuous process, even while changing the big bags, the blast head keeps doing its job. In the rear of the truck is a place for 8 to 10 pieces of 1 ton big bags, which means a non-stop working time of up to 8 hours, without having to stop the shot blasting production.







## 2-45DTM OPTIONS



**001112**

20 M SUCTION HOSE  
Ø150 MM



**B22055**

MAGNETIC BROOM R900



**990-0550 / 999-0660**

ABRASIVE S550 / S660



**E10693**

CAMERA SYSTEM



**2-45TBS-0000**

FULLY AUTOMATIC MAGNETIC  
SYSTEM 2-45TBS



**THG-2000**

TRIPLE HEAD GRINDER  
Ø2000 MM WORKING WIDTH

## **BLASTRAC EUROPE**

WE'RE READY TO ASSIST YOU!

---

### **BLASTRAC THE NETHERLANDS**

#### **EUROPEAN HEAD OFFICE**

Utrechthaven 12  
NL - 3433 PN Nieuwegein  
Tel.: +31 (0)30 601 88 66  
Fax: +31 (0)30 601 83 33  
Email: [info@blastrac.nl](mailto:info@blastrac.nl)  
[WWW.BLASTRAC.EU](http://WWW.BLASTRAC.EU)

### **BLASTRAC ITALY**

#### **SALES & SERVICE CENTRE**

S.S. 10 Padana Inferiore, 41  
IT - 29012 Caorso (PC)  
Tel.: +39 0523 814241  
Fax: +39 0523 814245  
Email: [info@blastrac.it](mailto:info@blastrac.it)  
[WWW.BLASTRAC.IT](http://WWW.BLASTRAC.IT)

### **BLASTRAC SPAIN**

#### **SALES & SERVICE CENTRE**

Calle del Estio, 9  
E - 28500  
Arganda del Rey, Madrid  
Tel.: +34 91 660 10 65  
Fax: +34 91 672 72 11  
Email: [info@blastrac.es](mailto:info@blastrac.es)  
[WWW.BLASTRAC.ES](http://WWW.BLASTRAC.ES)

### **BLASTRAC POLAND**

#### **SALES & SERVICE CENTRE**

Golina, ul. Dworcowa 47E  
63-200 Jarocin  
Tel.: +48 (0)62 740-41-50  
Fax: +48(0)62 740-41-51  
Email: [info@blastrac.pl](mailto:info@blastrac.pl)  
[WWW.BLASTRAC.PL](http://WWW.BLASTRAC.PL)

### **BLASTRAC GERMANY**

#### **SALES & SERVICE CENTRE**

Richard-Byrd-Str. 15  
50829 Köln  
Tel.: +49 (0) 221 709032-0  
Fax: +49 (0) 221 709032-22  
Email: [info@blastrac.de](mailto:info@blastrac.de)  
[WWW.BLASTRAC.DE](http://WWW.BLASTRAC.DE)

### **BLASTRAC UNITED KINGDOM**

#### **SALES & SERVICE CENTRE**

Unit 2a, Outgang Lane, Dinnington  
Sheffield, South Yorkshire  
GB - S25 3QY  
Tel.: +44 (0) 1909 / 569 118  
Fax: + 44 (0) 1909 / 567 570  
Email: [info@blastrac.co.uk](mailto:info@blastrac.co.uk)  
[WWW.BLASTRAC.CO.UK](http://WWW.BLASTRAC.CO.UK)

### **BLASTRAC FRANCE**

#### **SALES & SERVICE CENTRE**

ZI - 29, Av. des Temps Modernes  
F - 86360 Chasseneuil du Poitou  
Tel.: +33 (0)5 49 00 49 20  
Fax: +33 (0)5 49 00 49 21  
Email: [info@blastrac.fr](mailto:info@blastrac.fr)  
[WWW.BLASTRAC.FR](http://WWW.BLASTRAC.FR)

### **BLASTRAC UKRAINE**

#### **SALES & SERVICE CENTRE**

Nezalezhnosti 14, of. 21  
07400 Brovary  
Tel.: +38 (0)44 222 51 28  
Fax: +38 (0)44 277 98 29  
Email: [info@blastrac.com.ua](mailto:info@blastrac.com.ua)  
[WWW.BLASTRAC.COM.UA](http://WWW.BLASTRAC.COM.UA)

