

Dickens Heritage Lantern | Delivering more than just performance

Ambience

| Performance

| Low Glare

| Aesthetics

| Variable Photometry



The image features a black, ornate lantern with a multi-tiered top and a glass-enclosed body containing two light bulbs. The lantern is set against a background of technical drawings and a stylized building silhouette. The drawings include labels like 'DETAIL C SCALE 1:1', '18.5°', '3.0', 'E', '0.0', '3.8 -0.1 ∇ 8.5 (1° draft)', and 'top 7 positions'. The stylized building silhouette is at the bottom left.

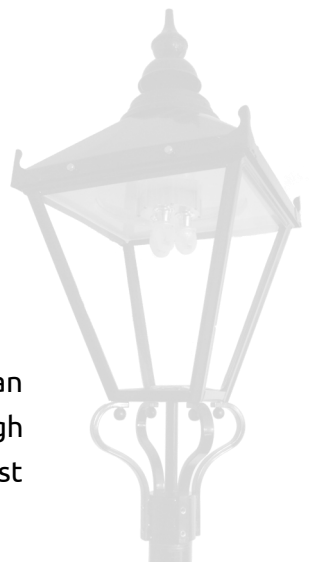
Dickens
powered by **varoplic**

Product Brochure

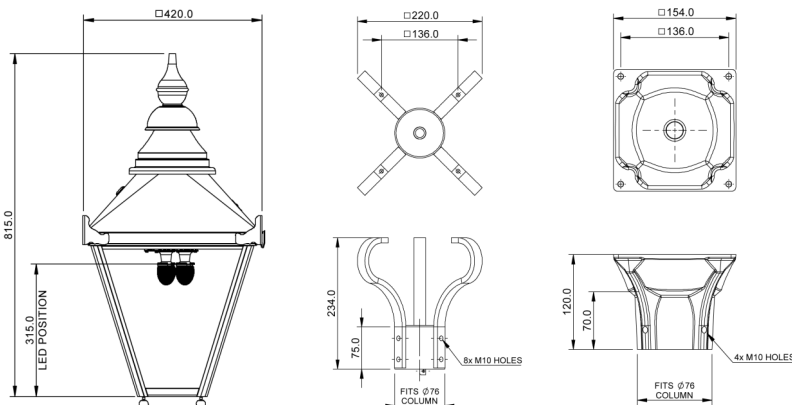
Dickens

Heritage Lantern

Our Dickens Heritage Lantern beautifully replicates the classic Victorian heritage style. Offered with our multi award-winning Varoptic® high performance low glare optic and also a high efficiency LED array to suit almost all scenarios



Product Overview



Technical Data

Weight	12.5kg
Windage	0.20m ²
Mounting height	3-6m
Mounting	76mm

Lantern Specification

- Tool free access luminaire housing
 - CE Marked
 - DALI enabled
 - Available with pre-programmed dimming profile
 - Lantern designed to IP65
 - Miniature photocell / NEMA socket options available
 - 2mm robust aluminium structure
 - Anti-vandal, UV resistant clear polycarbonate bowl
 - Automotive grade sealing gasket
 - Ø76mm frog mounting or Ø76mm cast base
 - Powder coated black (RAL 9005) as standard *
- * Other options available subject to minimum order quantities

LED option: Varoptic

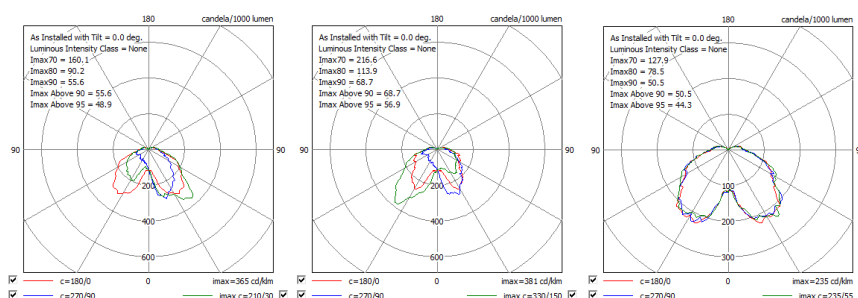
- Replica 'gas mantle' design
 - Very low glare
 - Latest generation LEDs & optics
 - Unique rotatable reflectors (patent pending)
 - Variable photometry
 - Lumen output: 3,300 - 8,900lm
 - Rated power: 36-96W
 - 3-8 module options
 - Correlated temperature (CCT): 2700K & 3000K *
 - Colour rendering index (CRI): 70
 - Luminaire rated to IP66
- * Other options available on request

LED option: High Efficiency LED Array

- Latest generation LEDs & optics
- Lumen output: 4,800 - 13,000lm
- Colour rendering index (CRI): 70
- Standard colour temperature: 3000K & 4000K
- Rated power: 40-110W
- Luminaire designed to IP66

Varoptic & LED Array Distribution [†]

Varoptic LED

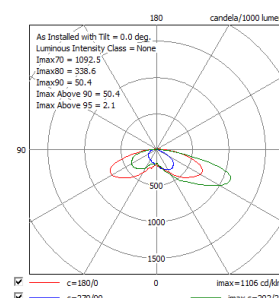


Distribution A1
(Narrow Road)

Distribution B1
(Wide Road)

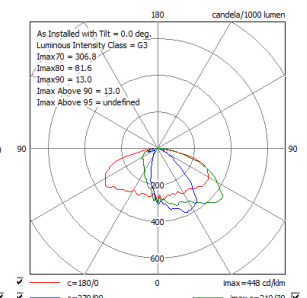
Distribution C1
(Area)

COB



Distribution A2
(Road)

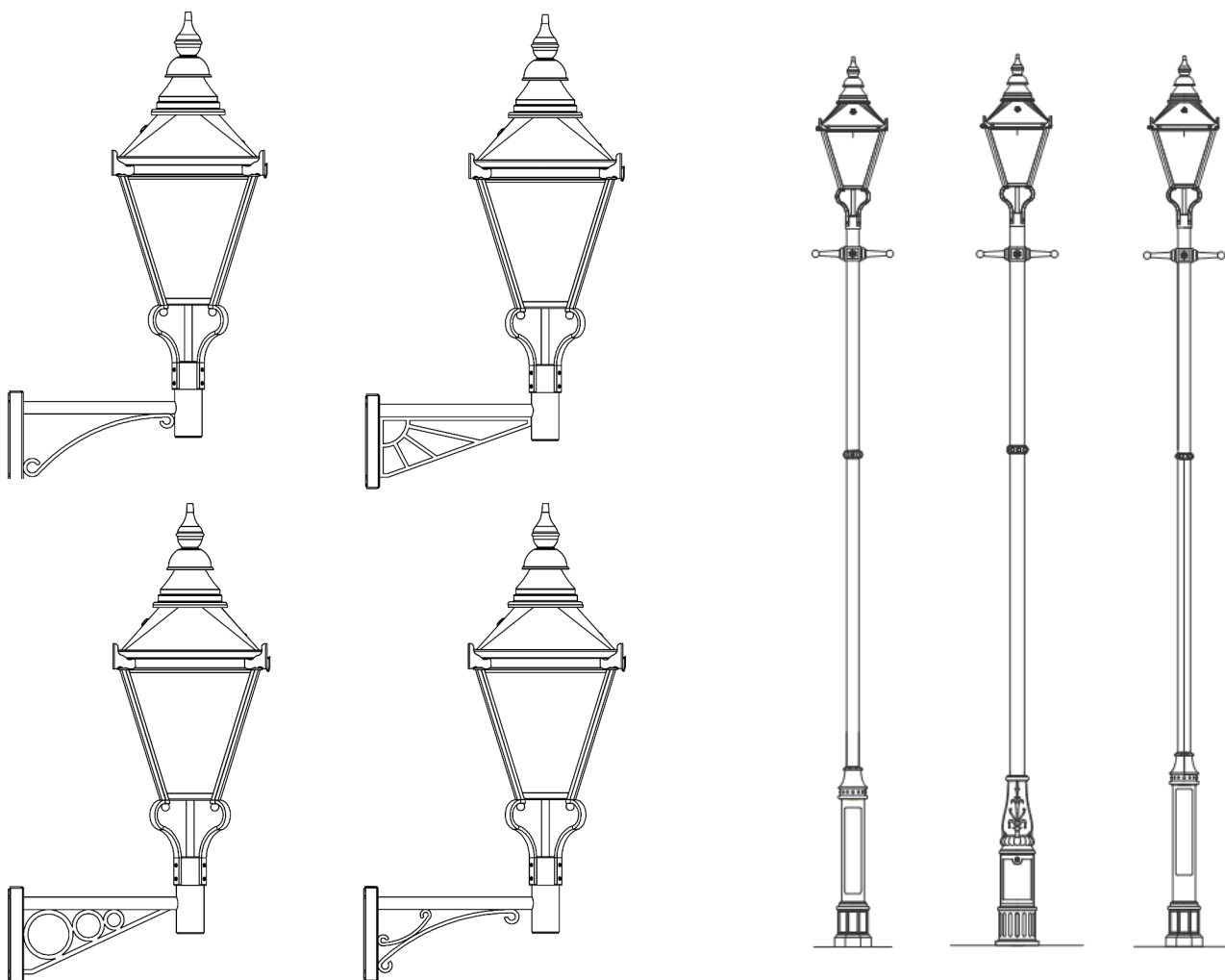
LED Array



Distribution A3
(Road)

[†]Other distribution options available on request

Mounting Brackets and Columns



Contact Us

For enquiries or further information please contact:

Address: Pudsey Diamond Engineering Ltd.
Mitchell Close
West Portway Industrial Estate
Andover
Hampshire
SP10 3TJ
United Kingdom

Phone: +44 (0)1264 33 66 77
Email: sales@pudseydiamond.com

© 2019 Pudsey Diamond Engineering Ltd. All rights reserved. This document or any part thereof may not be reproduced, stored in a retrieval system or transmitted in any way without written permission from Pudsey Diamond Engineering Ltd.



theLIA



INSTITUTION OF
LIGHTING
PROFESSIONALS
ILP

