

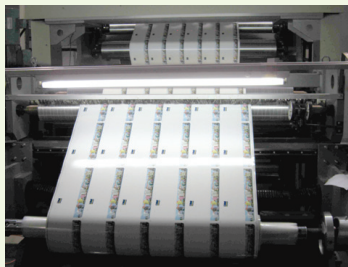
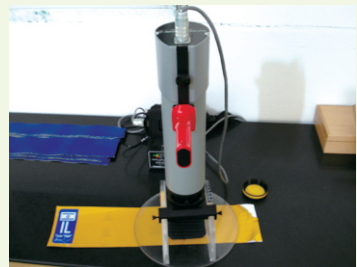
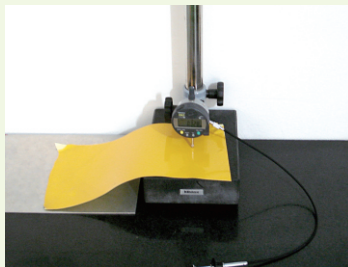


Give a Complete Solution for Making Security License Plates



Fuding Josheng Sign Co., Ltd. is a Professional License Plate manufacturer, to give a complete solution for making license plates., Our mainly services including:

1. Production complete license plate with security features.
2. Supply Blank license plate with security features, hydraulic press, hot stamping machine, roll coating machine, film laminating machine, hot stamping foil, windshield security sticker etc.
3. Give a professional technical support for making security number license plates. and supply required machines, equipments and materials.



With your help, Our continue efforts will make **JOSHENG** to be No. 1 license plate manufacturer in the world.

JOSHENG is not only making security license plate, we also give a complete solution to our customers to make license plate.

► At present, **JOSHENG** had success to cooperate with local company to win Tenders in following countries:

Bolivia, Brunei, Curacao, Cyprus, Ecuador, Egypt, India, Israel, Jordan, Liberia, Mauritius, Mongolia, Morocco, Pakistan, Philippine, South Sudan, St. Maarten, St. Eustatius, Tajikistan, Tanzania, Zanzibar, etc.



Jordan



Curacao



Israel



Morocco / Egypt / Cyprus



Liberia



Zanzibar

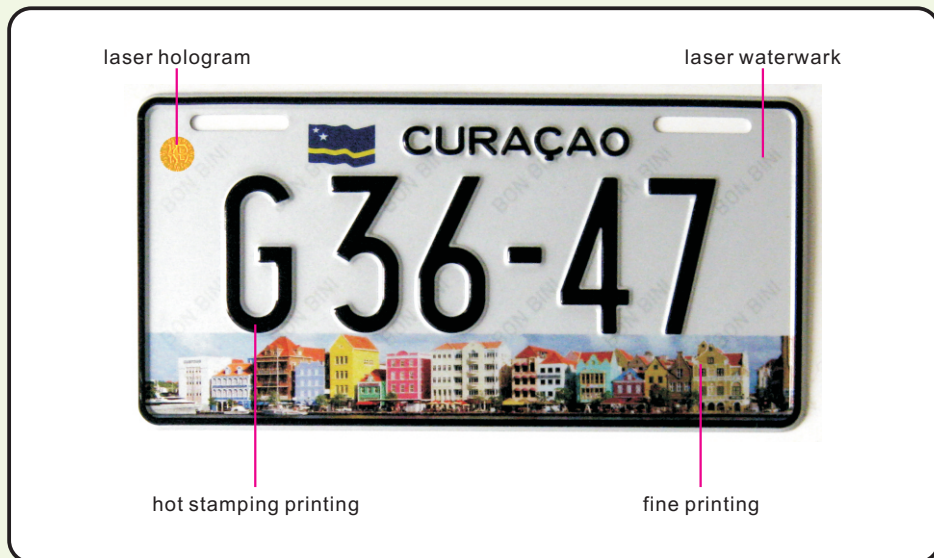


St. Maarten



St. Eustatius

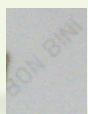
JOSHENG have more than 10 engineers to work for the security technology of license plate, which will help you to customize JOSHENG security systems to create the optional solution for precise needs of your country. our security features including Hot Stamping Printing with Inscription, Laser hologram, Laser watermark, Fine Printing, Laser serial No., Barcode etc.



➤ hot stamping printing



➤ laser hologram



➤ laser watermark



➤ fine printing



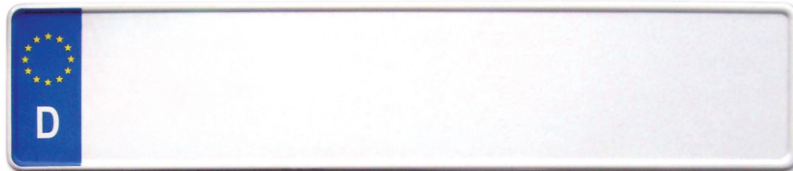
➤ laser serial no.



➤ barcode

Three Ways To Supply License Plate

1. Blank License Plate



2. Two Layers License Plate In Blank



3. Complete License Plate



Accessoris of License Plate



Information plates





Film Laminating Machine JS2300

Technical Data:

1. Power supply: 380V 50Hz
2. consumption: 70W
3. width of sticking film: 350mm
4. Speed: 3m/min.
5. Weight: 200kgs
6. Dimensions: 1600x680x1400mm



Hydraulic Press Machine JS2100

Technical Data:

1. Pressing area: 580X300mm
2. Stroke: 30mm
3. Electrical connection: 380V 5.5KW, 50Hz
4. Dimensions: 680(L) x 1170(W) x 1330(H) mm
5. Weight: 420 kgs
6. working pressure: 0-20Mpa



Roll Coating Machine JS2400

Technical Data:

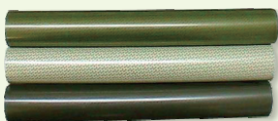
1. width of ink printing: 600mm
2. Speed: 11m/min.
3. power supply: 380V 50Hz
4. Motor consumption: 0.37kw
5. Weight: 120kg
6. Dimensions: 870X600X1020mm



Hot-Stamping Machine JS2200

Technical Data:

1. Power: 220V 50Hz
2. consumption of upper motor: 90W
3. consumption of lower motor: 60W
4. heating pipe: 500WX4
5. stamping temperature: 0-300
6. width of stamping: less 300mm
7. Speed: 4-5m / min.
8. Weight: 280kgs
9. Dimensions: 1500x640x850mm



Hot stamping foil



Mould