



# Euro-Blitz compact

The new compact class!



- Luminous intensity complies with EN 12352, class L8L/L8M
- Automatic switching ON – OFF by simply folding the feet
- Stable and skid resistant due to large footprint
- Impact resistant and weatherproof enclosure
- Great performance; bright LED flasher and steady backlight
- Fits also on folding signs (tripods)
- Rechargeable unit equipped with automatic overcharging and discharging protection
- Recharging and trickle charging from vehicle onboard mains via charging cable
- Automatic charging in the transport-and charging box via external contacts in the lamp's housing
- Lead-Gel rechargeable battery 6V/4.5 Ah incl. (in-built)
- 28 Ah battery not incl.

## Superb stability

Up to beaufort 9 wind force (strong)

## ON / OFF

Switching ON and OFF takes place automatically, by just folding the feet out and up!

Part no.	Power supply	Charging	Lens	Operation	PQ
<b>Euro-Blitz compact</b>					
21211NEU	Battery 6V	none	1-sided		1
21212NEU	Battery 6V	none	2-sided		1
21221NEU	Rechargeable battery 6V/4,5Ah	Transport- and charging box or mains adapter (not incl.)	1-sided	50 h	1
21222NEU	Rechargeable battery 6V/4,5Ah	Transport- and charging box or mains adapter (not incl.)	2-sided	25 h	1

### Euro-Blitz compact Synchron (sequential light)

21223NEU	Battery 6V	none	1-sided		1
21224NEU	Rechargeable battery 6V/4,5Ah	Transport- and charging box or mains adapter (not incl.)	1-sided	45 h	1

### Accessories

21225	Transport- and charging box with supply cable, as single box or to be connected with other boxes, no. 21226				1
21226	Transport- and charging box with connection cable, add-on box for 2-6 units				1
21227	Transport box (no charger)				1
84706	Safety catch, as transport lock for single boxes				1
84265	Mains adapter 230V/1.5V				1
926033VP	Vehicle charger cable 12/24V, cigarette lighter plug				1
251031C	Rechargeable battery 6V/4.5Ah				1

EMC compliant (E1)10R-047845

Certified by the BAST Cert. No.: V3-30-2015

<b>Dims. (WxDxH):</b>	185 x 90 x 345 mm
<b>Flash rate approx.:</b>	60/min.
<b>Weight approx.:</b>	1.3 kg without battery/ recharge. battery



Specifications are subject to change without notice





# Euro-Blitz compact

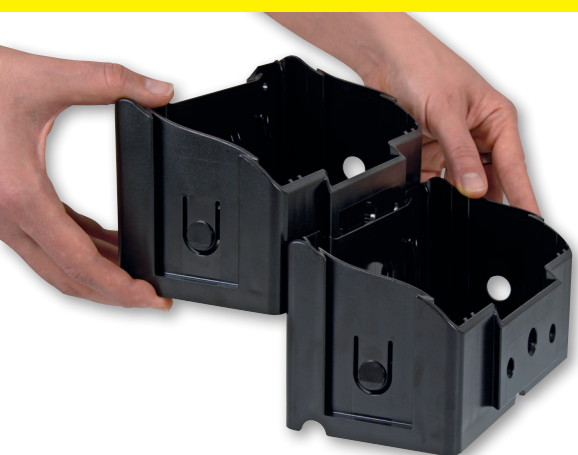
The new compact class!



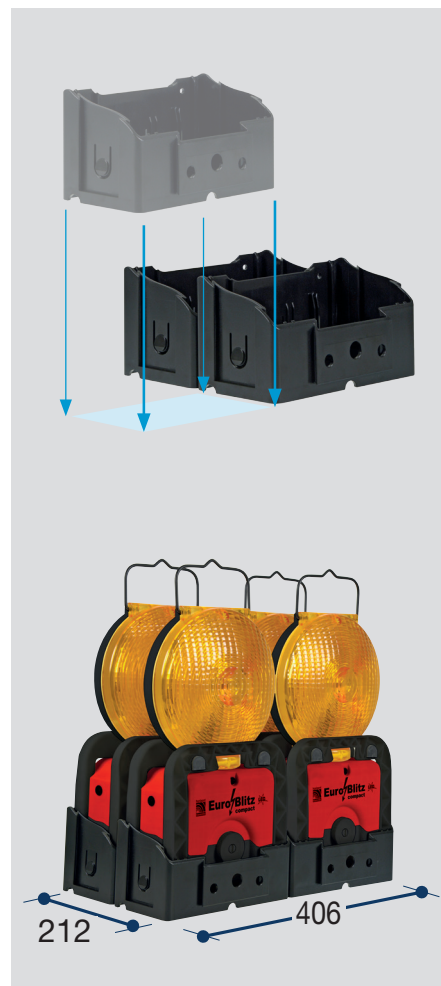
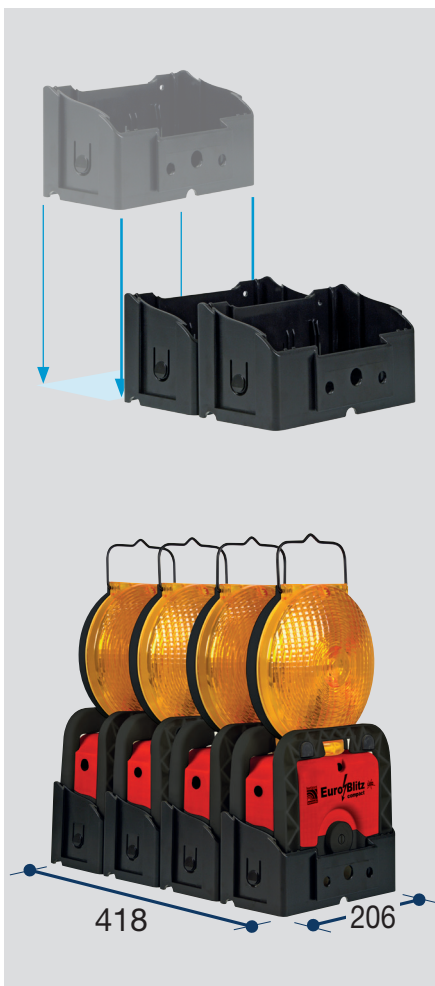
Go as you please - and arrange for any desired connection of transport- and charging boxes, to meet your individual space requirements.

No matter whether one box, 2, 3, 4 or more, lengthwise or across or even in L-form – just do!

A 4-fold system in its boxes requires space of only less than 0.09 m<sup>2</sup>.



**horizont group gmbh** ☎ +49(0) 56 31 / 5 65-200  
Homerberger Weg 4-6 ☎ +49(0) 56 31 / 5 65-248  
34497 Korbach ✉ [traffic@horizont.com](mailto:traffic@horizont.com)  
Germany 🏠 [www.horizont.com](http://www.horizont.com)



Specifications are subject to change without notice