



FLOW^{INSIGHTS}

Become a designer of
your **own smart sensor**

FLOW is a fully interactive video analytical traffic framework based on deep neural networks. Designed as a real-time tool, it is a perfect solution for traffic analysis & control as well as retail and security applications. Its unique visual programming language allows you to turn any camera stream into a stream of actionable insights.



Scalable solution

Available as both edge and server-based solution, FLOW offers incredible customizability, making it a perfect tool for a wide range of smart city tasks.



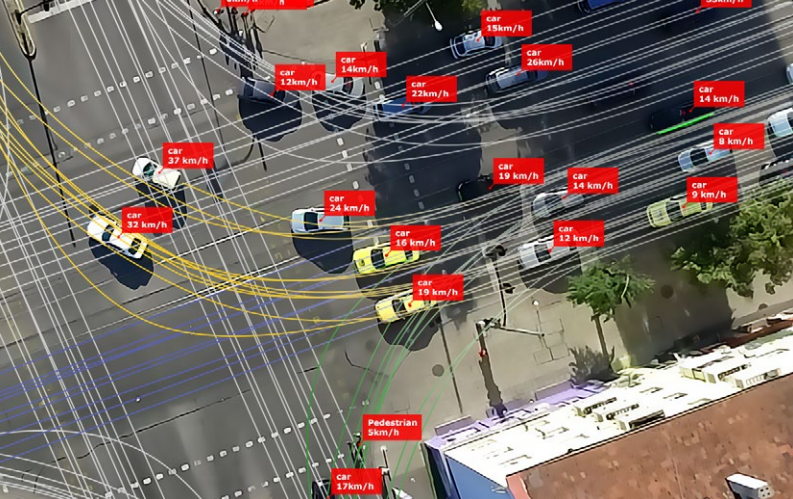
High-precision analysis

Thanks to its unique trajectory-based engine, FLOW provides you with accurate real-time data about object movements, counts, categories & speed.



Smart video analytics

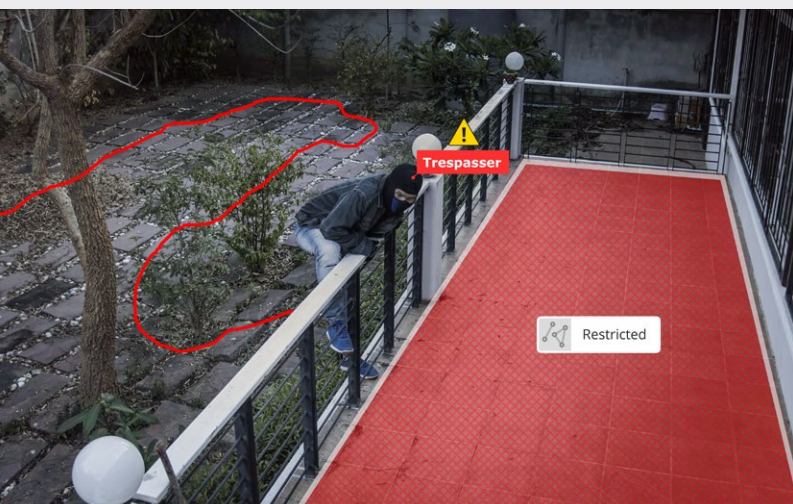
FLOW allows you to turn any IP camera into a smart sensor for detection and analysis - and even supports cross-camera collaboration!



Retail stores of the new era

FLOW grants you a unique opportunity to understand your customers' behavior and improve their shopping experience.

Monitor consumers looking at your shop windows, measure customer dwell time, prevent queues & get insights on potential profit. Create a store worth returning to.



Protecting citizens & public property

FLOW offers detection tools for countless safety & security applications.

Introduce smart monitoring to your streets and spot suspicious behavior right away. Create custom detection zones, secure perimeters and get alerted about all undesirable movements. Experience a new level of security.

FLOW INSIGHTS W.

TrafficCamera



A simple plug&play solution - smart IP camera with in-built analytics ready for immediate installation

TrafficEmbedded



A wireless anti-vandal outdoor device designed to enhance live streams from up to 6 cameras. Enjoy on-edge processing & maximum connectivity thanks to IP66, PoE, and GPIO ports.

TrafficEnterprise



Perfect for large-scale applications, our server based solution allows you to monitor your entire city at once.