



Whether used to structure spaces, to delimit an area or to optimize traffic flows, the domains where efficient and effective line marking is essential are both wide and varied. These can range from factories and warehouses where they are needed to ensure current labour regulations are respected and to improve safety by reducing transport risks, to marking-out sports fields or private car parks.

The SOPPEC LINE range of marking solutions is designed to meet all these needs with its purpose-designed application accessories and aerosol spray paints.

LINE MARKING PAINTS	4
TRACING PRO + SOPPEC DRIVER™ TROLLEY	6
TRACING	8
TRACING PLUS	10
TRACING SPORT	12
PROTECT LINE	14
MARKING PAINTS AND ACCESSORIES	16
4 WHEEL TROLLEYS WITH STORAGE FOR AEROSOLS CANS	17
ADHESIVE MARKING TAPES	18
HANDHELD AEROSOL GUN	18
STENCILS	19
STENCILS FOR HEALTH CRISIS	20
COMMON USES	21



LINE-MARKING PAINTS

The line marking paints designed by TECHNIMA meet the multiple requirements of durable, high-performance marking.

Whether the lines are to be marked indoors or outdoors, the TRACING products by TECHNIMA provide the solution for the vast majority of needs.

ENVIRONMENT AND SAFETY

- Our products are designed without CMR compounds (carcinogenic, mutagenic and reprotoxic...)
- Without Hexan et Methanol, Toluen et Xylen
- Without heavy metals such as Lead (PB), Cadmium (Cd), ...
- Without Environmental Hazard statement n° 412 : "toxic to aquatic organisms long-term damage to the ecosystem"
- Our labels are in compliance with EU regulation n° 1272/2008 and with its adaptation



ADVANTAGES

- Use head down, adjust the position of the aerosol in the equipment used to give an application height that produces the desired line width.
- **BEFORE USE:** Shake the can vigorously in an upside down position to thoroughly mix the paint, continue shaking even after having clearly heard the ball bearings.
- **AFTER USE:** Purge head up (until gas only comes out) to clean the valve and nozzle.



QSE CERTIFIED MANAGEMENT SYSTEM

.....

Our integrated QSE management system is based on 3 certifications, ISO 9001 for Quality, ISO 14001 for the Environment and OHSAS 18001 for Health and Safety. Within these 3 complementary fields, TECHNIMA own approach is based on risk analysis and prevention, continuous performance improvements, regulatory compliance and customers satisfaction.

Since 2004, our triple certification has been successfully renewed every 3 years.

The range is adapted to the needs for precision, visibility and durability.

STORAGE & HANDLING

.....

Aerosols should be stored at a temperature of between 15°C and 25°C and between 50% and 60% relative humidity.

Storage time before use, if stored correctly as above : 4 years

Do not expose to temperatures above 50°C.

Keep away from sources of ignition, heat and sunlight.

As with any other handling and storage operations, NO SMOKING is very strongly recommended.

PACKAGING INFORMATION

.....

Aerosols of 650 ml gross volume and a net volume of 500 ml/ Tracing 500ml are delivered on film-wrapped palettes of 75 boxes, each box containing 12 aerosols.

All Aerosols of 1000 ml gross volume and 750ml net volume (Tracing 750, Tracing Plus and Tracing Sport) are delivered on film-wrapped palettes of boxes, each box containing 6 aerosols.

TRACING PRO

NEW

TRACING[®] PRO

Its exclusive formula, developed in our laboratory, guarantees exceptional performance:

Better resistance to clogging than any of its closest competitors.

Covering of up to 90m in 75mm wide line with 1 aerosol at optimum speed and on smooth ground.

Touch-dry in 11 minutes, light traffic-ready in 60 minutes and in 24 hours for heavy traffic.

Brighness, contrast, durability, it is an industrial grade marking paint that withstands the most severe conditions (UV, solvents, pedestrian, car or forklift truck traffic) indoors or outdoors.

NSF certified (food contact and storage).

Xylene-free, and guaranteed without chlorinated solvents and aromatic compounds.

Includes the exclusive, versatile and pre-mounted nozzle, which can be used with the SOPPEC DRIVER[™] trolley or by hand.

FEATURES

Binding: thermoplastic acrylic resin. Satin finish. Mineral and organic pigments free of heavy metals such as lead or cadmium. Aerosol containing 1000ml gross / 750ml net delivered in boxes of 6 by colour. 7 colours available, identifiable by their coloured collar. Made in France.



RAL 9016
REF : I520000

RAL 5017
REF : I520010

RAL 1023
REF : I520020

RAL 9017
REF : I520030

RAL 3020
REF : I520040

RAL 6024
REF : I520050

RAL 7045
REF : I520070



The SOPPEC PureSPRAY™ system stands for the very best of TECHNIMA's expertise within the area of aerosol marking paint.

- It is the very unique combination of a paint formulation with more pigments, the exclusive design of the combo « aerosol + spray nozzle + trolley » which secures a pure line, with no need of flanges or other tweaks to keep the line edge quality under control.
- The trolley does not require cleaning after use.
- The pressure level within the aerosol can along with the spray system were designed to provide fast and high coverage marking. The Optimal Application Speed of the SOPPEC PureSPRAY™ system is the highest on the market.
- Using the SOPPEC DRIVER™ application trolley and the SOPPEC TRACING® PRO paint spray cans, you proceed with 500 m within 30 minutes, and you don't have to clean the equipment.
- The SOPPEC PureSPRAY® system is providing you with a precise marking with no side-spray.

It is 40% faster to use than its closest competitor.

NEW

CHARIOT SOPPEC DRIVER™

The central positioning of the tiller ensures a high stability and minimises the user interference during the application. The wheels with wide tread (32mm) and long wheelbase secure a straight drive.

Aerosol positioning is intuitive, thanks to the exclusive SOPPEC PureSPRAY™ nozzle cradle. The spraying zone is sheltered and optimized so as not to disrupt the paint flow. A wind shield (optional) further increases protection in challenging weather conditions. The compact shape allows marking up to 60 mm of a front obstacle and 79 mm from a side obstacle. The line width is infinitely adjustable from 5 to 12 cm. The trolley set-up is done with no tool: screw the tiller back in its slot and adjust the aerosol holder position.

It can be stowed away in an instant: swing the trolley on the nose by using the handle and screw the tiller at the rear. The SOPPEC DRIVER™ trolley may be converted into an adhesive tape applicator. (September 2021)



storage mode

REF.
441600PURE



FEATURES

Polyethylene trolley. Epoxy powder coated steel aerosol holder and tiller arm. Ø 150 mm wheels with ball bearings. 3 years warranty. Made in France.

CARACTERISTICS

Thermoplastic acrylic resin binder. Satin finish. Inorganic and organic pigments free from heavy metals such as lead or cadmium. 1000 ml aerosol can / 750 ml net. Per box of 6 per color. Manufactured in France.



TRACING

LINE MARKING PAINTS [500 and 750ml]

TRACING® line marking paints is used to mark-out surfaces and optimize traffic flows both indoors and out: logistics warehouses, sports centres, grass sports fields, cycle paths or car parks.

TRACING® is ideal for marking-out floors and other ground surfaces in **low-traffic areas**.

The 750ml offers the best value for money for outdoor marking.

WHITE
500ML I5I600
750ML I5I800



BLUE
500ML I5I601
750ML I5I801



YELLOW
500ML I5I602
750ML I5I802



BLACK
500ML I5I603
750ML I5I803



RED
500ML I5I604
750ML I5I804



GREEN
500ML I5I605
750ML I5I805



Line width 4 cm to 10cm	1 x 500 ml aerosol		1 box of 12 x 500 ml aerosols		1 x 750 ml aerosols	
	1 coat	2 coats	1 coat	2 coats	1 coat	2 coats
One slow application	50m	25m	600m	300m	75m	37m
Rapid application	75m	37m	900m	450m	110m	55m



PROPERTIES

- Excellent adhesion.
- Good weather resistance and fast drying: 15 to 20 minutes or less.
- Crisp, sharp lines thanks to its purpose-designed nozzle.
- Application temperature: from +5°C to 50°C.

SPECIFICATIONS

Composition

Binder: thermoplastic acrylic

Pigments: mineral and organic, lead and cadmium-free

Solvents: a complex blend free from chlorinated solvents and aromatic compounds (toluene, xylene, etc)

Propellant: a specific mix of isobutane and propane

Application method

Manually or using our application equipment (4-wheel marking trolley, hand gun, see page 15)

Drying Time: 15 to 20 min

Health and safety

Safety data sheets are available free of charge on the internet: www.quick-fds.com

CLP labelling with a single pictograph.



Recommendation for use

- **Use head down, adjust the position of the aerosol in the equipment used to give an application height that produces the desired line width.**
- **BEFORE USE:** Shake the can vigorously in an upside down position to thoroughly mix the paint, continue shaking even after having clearly heard the ball bearings.
- **AFTER USE:** Purge head up (until gas only comes out) to clean the valve and nozzle.

GENERAL CONDITIONS FOR USE

Whatever the nature of the surface, the following conditions are essential for the optimal application of TRACING®

Correct preparation of the surface to be painted is imperative to obtain excellent paint adhesion. Thoroughly clean the surface to ensure that it is free from dust, dirt, grease, etc.

Relative humidity should be between 10% and 50%.

The application temperature should not be below 5°C.

For a good quality line, the first coat should be applied quickly (print layer); on the other hand, the second and optional third coats should be applied more slowly to obtain the desired coverage.

Recommendations by surface type:

• CONCRETE

Before applying Tracing® to a new concrete surface, allow a minimum of 3 to 4 weeks for complete drying (French building trades standards) and the elimination of acidity.

• ASPHALT

It is advisable to wait at least 15 days before line-marking a new asphalt surface in order to avoid any alteration to the quality of the marking.

- Special conditions applicable to "synthetic" (plastic, PVC, varnishes) and painted (epoxy, PU) floor surfaces.

In this domain, there are several different types of paint and the paint used for the floor may be incompatible with TRACING® (resulting in poor adhesion). We therefore recommend carrying out a test beforehand for these specific types of surface.

Lines can be given a protective coating of our PROTECT LINE varnish (see page 12) for improved longevity and dirt resistance.



TRACING PLUS

TRACING® PLUS LINE MARKER “HIGH PERFORMANCE”

NSF certified for use by the food industry.

Being particularly dirt-resistant, it is ideal for marking lines in **high-traffic areas** such as factory floors and logistics warehouses.

With its 750 ml packaging, TRACING® PLUS offers durable and economical marking, notably indoors. NSF certified to comply with use in food processing facilities.

WHITE
151700

BLUE
151701

YELLOW
151702

BLACK
151703

RED
151704

GREEN
151705



Line width 4 cm to 10cm	1 x 750 ml aerosol	
	a single coat	2 coats
One slow application	100m	50m
Rapid application	150m	75m



PROPERTIES

- Excellent adhesion and high resistance to mechanical wear.
- Excellent resistance to dirt.
- Crisp, sharp lines thanks to its purpose-designed nozzle.
- Rapid drying: approximately 15 to 20 min.
- Application temperature: from +5°C to 50°C.
- **NSF "non-food compound" certified**, usable in food storage areas or where food products are manufactured.

NSF is the most know organism over the World. Registration number 149 448. Catgory code P1.

SPECIFICATIONS

Composition

Binder: thermoplastic acrylic

Pigments: mineral and organic, free from lead and cadmium

Solvents: a complex blend free from chlorinated solvents and aromatic compounds (toluene, xylene, etc)

Propellant: dimethyl ether

Application method

Manually or using our application equipment (4-wheels marking trolley, hand gun, see page 15)

Drying Time: 15 to 20 min

Health and safety

Safety data sheets are available free of charge on the internet: www.quick-fds.com

CLP labelling with a single pictograph



GENERAL CONDITIONS FOR USE

Whatever the nature of the surface, the following conditions are essential for the optimal application of

TRACING® PLUS:

Correct preparation of the surface to be painted is imperative to obtain excellent paint adhesion.

Thoroughly clean the surface to ensure that it is free from dust, dirt, grease, etc.

Relative humidity should be between 10% and 50%.

The application temperature should not be below 5°C.

For a good quality line, the first coat should be applied quickly (print layer); on the other hand the second and optional third coats should be applied more slowly to obtain the desired coverage.

Recommendations by surface type:

• CONCRETE

Before applying TRACING PLUS® to a new concrete surface, allow a minimum of 3 to 4 weeks for complete drying (French building trades standards) and the elimination of acidity.

• ASPHALT

It is advisable to wait at least 15 days before line-marking a new asphalt surface in order to avoid any alteration to the quality of the marking.

• Special conditions applicable to "synthetic" (plastic, PVC, varnishes) and painted (epoxy, PU) floor surfaces.

In this domain, there are several different types of paint and the paint used for the floor may be incompatible with TRACING® PLUS (resulting in poor adhesion). We therefore recommend carrying out a test beforehand for these specific types of surface.

Lines can be given a protective coating of our PROTECT LINE varnish (see page 12) for improved longevity and dirt-resistance.

RECOMMENDATIONS FOR USE

• Use head down, adjust the position of the aerosol in the equipment used to give an application height that produces the desired line width.

• **BEFORE USE:** Shake the can vigorously in an upside down position to thoroughly mix the paint, continue shaking even after having clearly heard the ball bearings.

• **AFTER USE:** Purge head up (until gas only comes out) to clean the valve and nozzle.





TRACING SPORT

TRACING® SPORT [750 ml]

TRACING® SPORT, the line marking solution specifically designed for **multisport grass sports fields**. TRACING® SPORT is available as a 750 ml aerosol (net volume) and meets the most demanding requirements for high quality marking. TRACING® SPORT is applied using a marking trolley specifically designed for grass sports fields:

WHITE
151800SP0



BLUE
151801SP0



YELLOW
151802SP0



BLACK
151803SP0



RED
151804SP0



GREEN
151805SP0



Line width 4 cm to 10cm	1 x 750 ml aerosol	
	a single coat	2 coats
One slow application	75m	37m
Rapid application	110m	55m



PROPERTIES

- Crisp and precise marking thanks to its purpose-designed nozzle
- Rapid drying (15-20 min)
- Excellent coverage
- Specially-designed formulation that will not damage the grass
- Weatherproof for long-term marking
- Temperature of use: +5° to 50°C

SPECIFICATIONS

Composition

Binder: acrylic

Pigments: mineral and organic, free from lead and cadmium

Solvents: a complex blend free from chlorinated solvents and aromatic compounds (toluene, xylene, etc)

Propellant: a specific mix of isobutane and propane

Application method

Manually or using our application equipment (4 wheel marking trolley, see page ..)

Drying Time: 15 to 20 min

Health and safety

Safety data sheets are available free of charge on the internet: www.quick-fds.com

CLP labelling with a single pictograph



GENERAL CONDITIONS FOR USE

For a good quality line, the first coat should be applied quickly (print layer); however the second and optional third coats should be applied more slowly to obtain the desired coverage.

For maximum visibility, a 2-coat application (with a rapid first application) is recommended.

Marking applied to wet or damp grass will have a shorter life.

Whenever possible apply to dry ground.

RECOMMENDATIONS FOR USE

- Use head down, adjust the position of the aerosol in the equipment used to give an application height that produces the desired line width.

- BEFORE USE: Shake the can vigorously in an upside down position to thoroughly mix the paint, continue shaking even after having clearly heard the ball bearings.

- AFTER USE: Purge head up (until gas only comes out) to clean the valve and nozzle.



PROTECT LINE

WATER-BASED PROTECTIVE VARNISH

PROTECT LINE is an aqueous phase protective varnish that lengthens the life of lines marked using paint from the TRACING and TRACING PLUS

ranges by improving resistance to heavy traffic.

Apply 1 or 2 coats using a roller, brush or spray.
Waterproofs and protects against stains and dust.

Good resistance to scuffing and scratching.



REFERENCE
442200



PROPERTIES

- High dry-extract level (33% +/-2%)
- Appearance: milky white becoming transparent when dry
- Finish: satin
- Quantity required: 15 a 50 m²/l depending on the application surface and dilution
- Drying: 2 to 4 hours
- Time before the surface can be used (traffic-ready): 24 to 48 hours
- Application temperature: +5°C to +30°C
- Density: 1.05

SPECIFICATIONS

Composition

Aqueous dispersion of acrylic resins mixed with a wax emulsion.
White, odourless liquid that can be diluted with water forming a transparent satin-finish coat once dry.

Application method

Manually or using our application equipment (paint roller...)
Drying Time: 15 to 20 min

Health and safety

Safety data sheets are available on the internet free of charge: www.quick-fds.com

RECOMMENDATION FOR USE

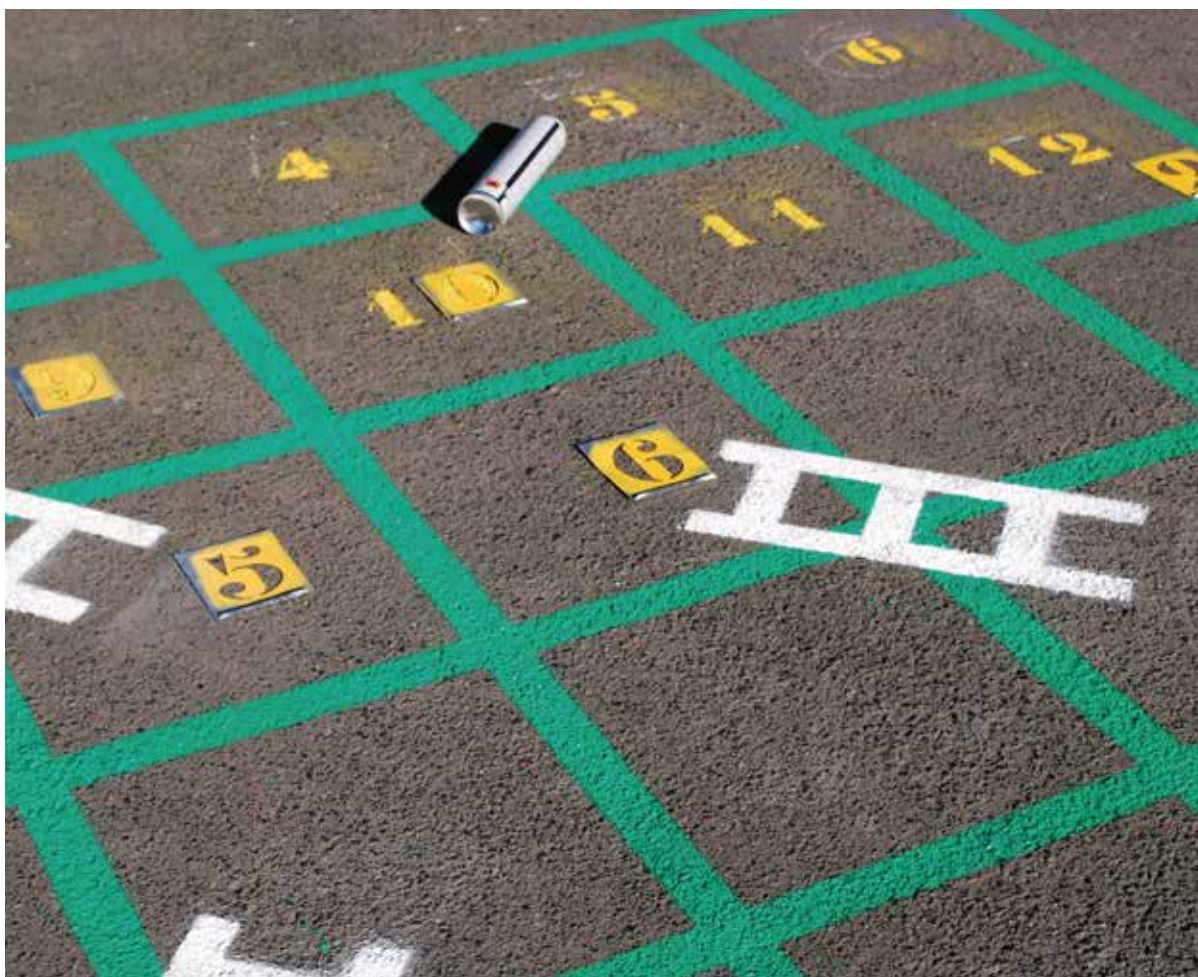
- Easy to use, containing only one component, it requires neither special training nor any sophisticated application equipment.
- Dilution: can be used neat or diluted with water (between 5% and 15%) according to requirements
- Sensitive to frost
- The unused product should be stored at a temperature between 5°C and 25°C in a dry, well-ventilated area
- Store in a frost-free place, can be kept for 18 months in the original, unopened packaging
- Keep all packaging tightly closed, carefully close after opening and keep upright
- Keep away from sources of ignition, heat and sunlight



MARKING PAINT ACCESSORIES AND RELATED PRODUCTS

For the use of marking sprays, TECHNIMA offers a range of marking trolleys depending on the nature of the surface and the work involved.

Also, a range of stencils allows to complete the offer.





4-WHEELS TRACING TROLLEY BLACK

.....

The 4-wheels tracing trolley black is specifically designed for the TRACING® and TRACING PLUS® range of line markers. It allows to store aerosols while tracing the line.

SPECIFICATIONS

- A multipurpose tool that adapts to take both 500ml aerosols and the larger 750ml size.
- Use of one or two cans possible for better coverage
- Weight: 12kg
- Adjust grip for left and right handed use
- Stable, strong wheels
- Possibility to store 4 aerosols
- Dimensions : 61x40x35 cm

APPLICATION

- Can be used on different surfaces (CONCRETE, ASPHALT...) for many uses
- Car parks, roads and paths
- All types of storage areas and warehousing ...
- Used to mark along walls or corners



REF.
441613

.....





GROUND MARKING TAPES



Available in 3 plain colors and one striped version, those adhesive ground marking tapes provide you with an easy and efficient solution to manage the workplace safety on your facility.



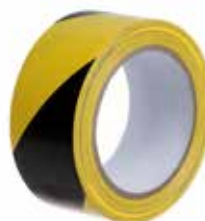
GROUND MARKING TAPE WHITE
55x33
REF. 451767



GROUND MARKING TAPE YELLOW
55x33
REF. 451768



GROUND MARKING TAPE BLUE
55x33
REF. 451769



GROUND MARKING TAPE BLACK & YELLOW
55x33
REF. 451770



HANDHELD AEROSOL GUN



The new plastic aerosol gun grip from TECHNIMA is lightweight and purpose-designed for professional line marking. With its new design and new materials, it meets the needs of the most demanding users. Can be used with aerosol cans of various sizes and can be personalised for your own brand, it is also an essential tool when marking with stencils. Avoids discomfort and reduces the fatigue caused by long periods of marking.

Marking accessories (straight lines/circles): cord reel and pickets.



REFERENCE
432447

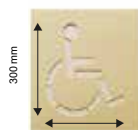




STENCILS



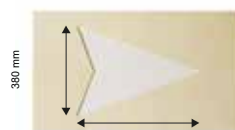
A range of standard stencils is available: arrows, numbers, current symbols
such as pedestrian crossing
These are 1 mm thick PVC stencils; they can be reusable after cleaning with a solvent.



DISABLED
300 MM X 250 MM
RÉF. 451720



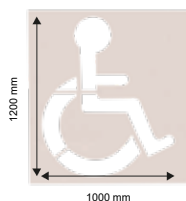
LETTERS A TO J
210 MM X 140 MM
RÉF. 451723



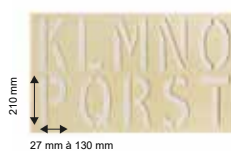
LARGE ARROW HEAD
380 MM X 530 MM
RÉF. 451726



ZEBRA
400 MM X 1300 MM
(PVC 0.2mm d'épaisseur réutilisable)
RÉF. 451760



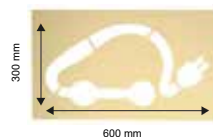
DISABLED
1200 MM X 1000 MM
(PVC 0.2mm d'épaisseur réutilisable et en deux parties)
RÉF. 451757



LETTERS K TO T
210 MM X 27mm à 130 MM
RÉF. 451724



SCHOOL WARNING SYMBOL
850 MM X 450 MM
RÉF. 451728



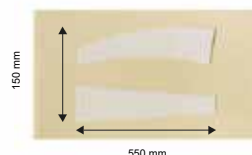
ELECTRIC CAR
300 MM X 600 MM
RÉF. 451758



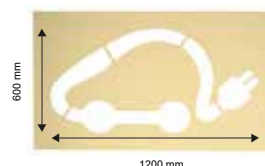
PEDESTRIAN CROSSING
400 MM X 740 MM
RÉF. 451756



LETTERS U TO Z
210 MM X 27 mm à 113 MM
RÉF. 451725



2 ARROWS TAILS
150 MM X 550 MM
RÉF. 451727



ELECTRIC CAR
600 MM X 1200 MM
RÉF. 451759



« STOP » SYMBOL
400 MM x 800 MM
RÉF. 451729



SYMBOL NUMBERS 0 TO 9
205 MM à 215 mm X 54 MM à 117 MM
RÉF. 451722



CYCLE LANE
850 MM X 450 MM
RÉF. 451755



STENCILS FOR HEALTH CRISIS

.....

Stencils for health crisis SOPPEC are ideal for limiting contact and indicating the right barrier gestures to adopt in the fight against the spread of the coronavirus.

These stencils are intended for establishments receiving the public (pharmacy, supermarket, shopping centre, administration, bank, schools...).

They are reusable and can be cleaned with a solvent.



MANDATORY 2-PART MASK STENCIL
350 MM x 350 MM
REF. 451761



MANDATORY 2-PART MASK STENCIL
800 MM x 800 MM
REF. 451762



DIRECTIONAL ARROW STENCIL
800 MM x 600 MM
REF. 451765



2-PART DISTANCE STENCIL
350 MM x 350 MM
REF. 451763



2-PART DISTANCE STENCIL
800 MM x 800 MM
REF. 451764




STENCIL IMPRESSIONS STOP
800 MM x 600 MM
REF. 451766





COMMON USES

PRODUCT PERFORMANCES	PRIVATE PARKING, PRIVATE ROADS CIRCULATION (ASPHALT, CONCRETE)	SCHOOL MARKING, MULTISPORTS FIELDS, ASPHALT, CONCRETE	HORIZONTALE MARKING : FACTORY HALL, LOGISTIC WAREHOUSES	HORIZONTALE MARKING STORAGE AND PRODUCTION FOOD SUPPLIES	MARKING GRASS SPORTS FIELDS (AMERICAN FOOTBALL, HAND BALL, GOLFS....)
VISIBILITY OF LINES	+++	+++	++	++	++++
USE ON WET SURFACE	+++	+++	+++	++	++
MARKING DURATION	++	++	+++	++	+
TEMPERATURE OF USE	5°/50°C	5°/50°C	5°/50°C	5°/50°C	5°/50°C
STAINS RESISTANT	++	++	+++	+++	+
SMOOTH GROUNDS ADHESION	+	+	+++	+++	-
TEAR RESISTANT	+++	++	+++		+
COVERING POWER	++	++	+++	+++	++
CERTIFICATION 	-	-	+++	+++	-
MORE ENVIRONMENTALLY FRIENDLY PRODUCTS	Tracing and Tracing 750	Tracing and Tracing 750	Tracing Plus	Tracing Plus	Tracing Sport
APPLICATION ACCESSORIES	4-wheels Trolley, Sport Trolley			Specific Sport Trolley	
COMPLEMENTARY PRODUCTS	Stencils, Protect line			Stencils	



NOTES

